



Brougham Road, W3

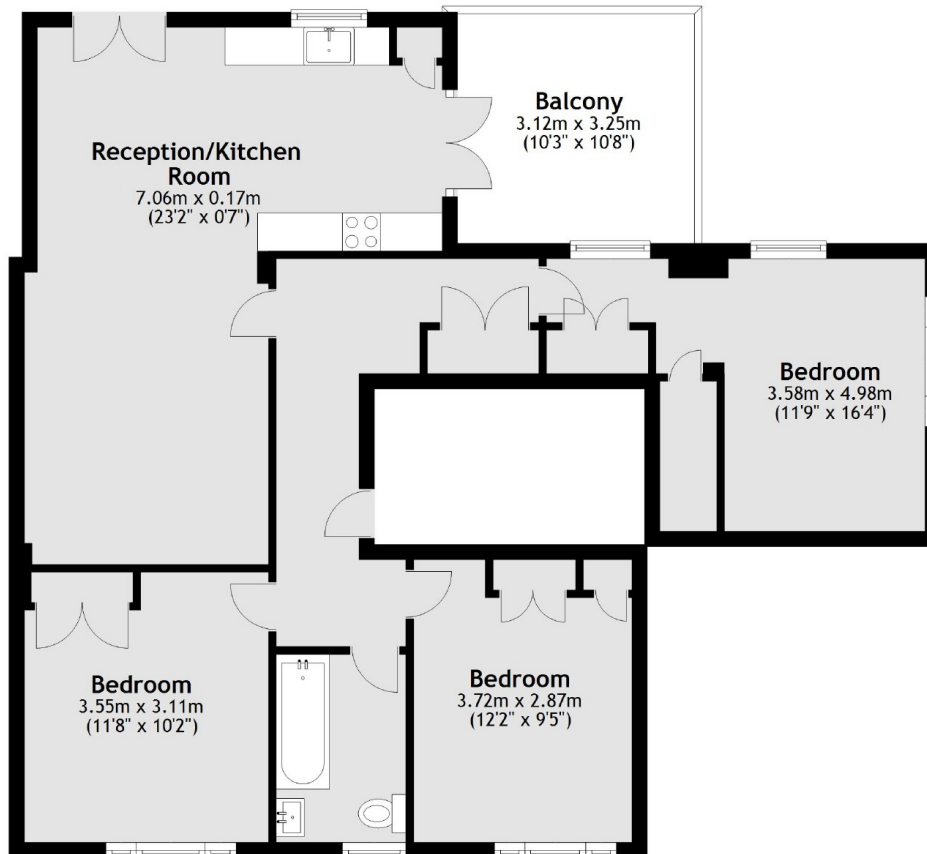
£625,000

A first floor three bedroom apartment with a large private terrace. The property is in excellent condition throughout, offers almost 900 sq.ft of accommodation and has no onward chain.

Brougham Road is within 200 metres of the new Elizabeth Line station Acton Main Line and half a mile from Acton Central and the shops and amenities of Churchfield Road.

- Three Bedrooms • First Floor • Private Terrace •
- No Onward Chain • Close To Station • Long Lease •

First Floor



Total area: approx. 81.6 sq. metres (878.2 sq. feet)

Robertson Smith & Kempson Acton Sales
137 High Street, Acton,
London, W3 6LY
020 8896 3996
actonsales@robertsonsmithandkempson.co.uk

Energy Rating: B. We aim to make our particulars both accurate and reliable. However they are not guaranteed; nor do they form part of an offer or contract. If you require clarification on any points then please contact us, especially if you're traveling some distance to view. Please note that appliances and heating systems have not been tested and therefore no warranties can be given as to their good working order.