



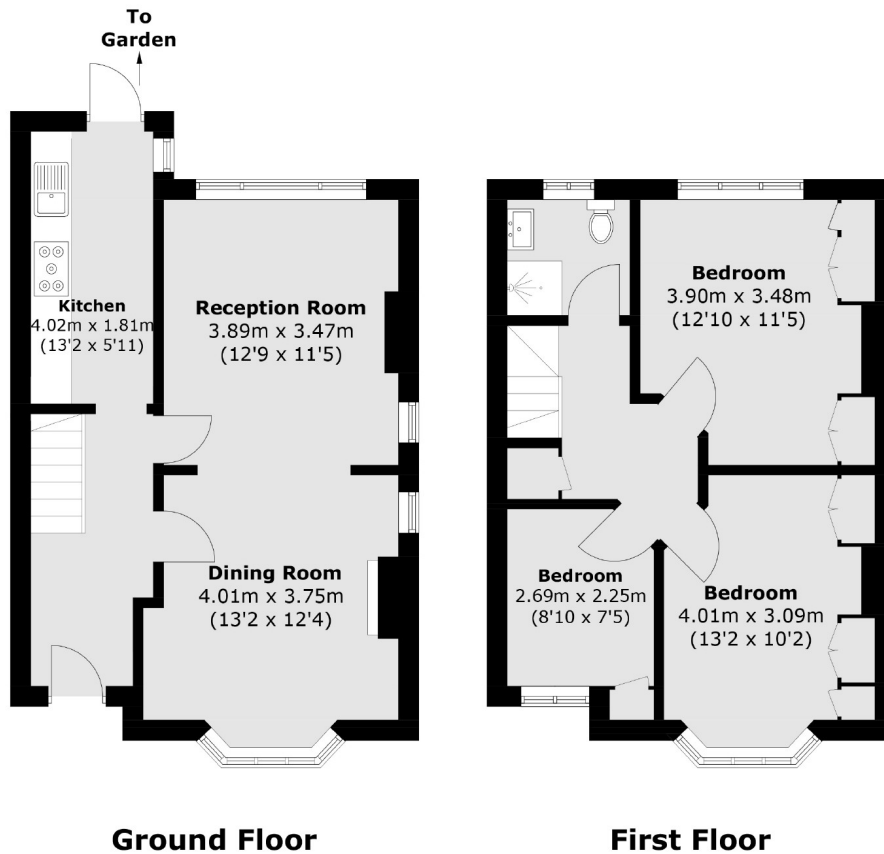
St. Andrews Road, W3

£680,000

An end of terrace three bedroom house with off-street parking near East Acton station. The property is in need of updating, has a large garden offering further potential to extend (STPP) and is offered with no onward chain.

St. Andrews Road is within 500 metres of East Acton station and within a mile of the new Elizabeth Line station, Acton Main Line both of which provide excellent access into town.

- Three Bedrooms • Semi-Detached • Private Garage •
- Freehold • Potential To Extend (STPP) • Large Garden •



Total area (approx.): 84.4 sq. m (908.5 sq. ft)

Robertson Smith & Kempson Acton Sales
137 High Street, Acton,
London, W3 6LY
020 8896 3996
actonsales@robertsonsmithandkempson.co.uk

Energy Rating: E. We aim to make our particulars both accurate and reliable. However they are not guaranteed; nor do they form part of an offer or contract. If you require clarification on any points then please contact us, especially if you're traveling some distance to view. Please note that appliances and heating systems have not been tested and therefore no warranties can be given as to their good working order.