



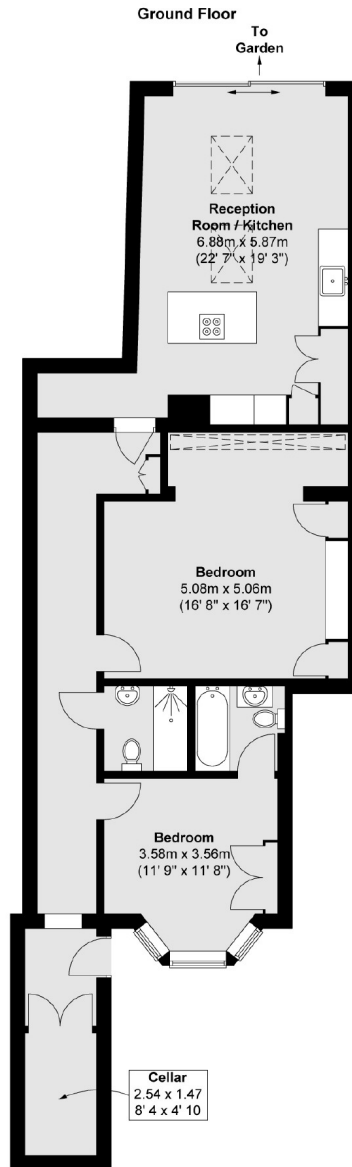
## Avenue Crescent, W3

£675,000

A recently refurbished garden flat in a period property in the Mill Hill Conservation Area. The property offers in excess of 1000 sq.ft of accommodation, private entrance, direct access to a landscape garden and off-street parking,

Avenue Crescent is within half a mile of both Acton Town (Piccadilly and District lines) and South Acton (Overground) stations both of which provide excellent access into town.

- Two Bedrooms • Period Conversion • Private Garden •
- Share Of Freehold • Off-Street Parking • Newly Refurbished •



Total area (approx.) : 98.3 sq. m (1058 sq. ft)

Robertson Smith & Kempson Acton Sales  
137 High Street, Acton,  
London, W3 6LY  
020 8896 3996  
[actonsales@robertsonsmithandkempson.co.uk](mailto:actonsales@robertsonsmithandkempson.co.uk)

Energy Rating: E. We aim to make our particulars both accurate and reliable. However they are not guaranteed; nor do they form part of an offer or contract. If you require clarification on any points then please contact us, especially if you're traveling some distance to view. Please note that appliances and heating systems have not been tested and therefore no warranties can be given as to their good working order.