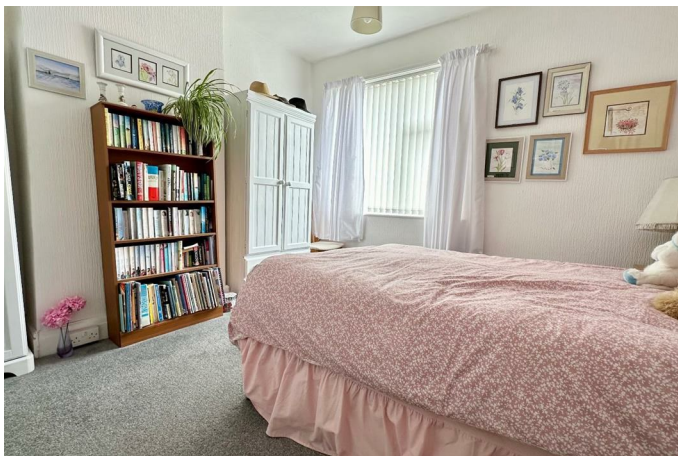




HUNTERS[®]

HERE TO GET *you* THERE

Claremont Road, Blackpool | Price £130,000
Call us today on 01253 362640



Thinking of Selling?

If you are thinking of selling your home or just curious to discover the value of your property, Hunters would be pleased to provide free, no obligation sales and marketing advice. Even if your home is outside the area covered by our local offices we can arrange a Market Appraisal through our national network of Hunters estate agents.

****IMMACULATE GARDEN TERRACED HOUSE WITH 3 BEDROOMS, LOFT ROOM, SOUTH FACING COURTYARD, VIEWS ACROSS A TREE LINED PARK OPPOSITE, NO ONWARD CHAIN INVOLVED**** Garden Terraced House comprising Storm Porch, Hallway, Open Plan Lounge & Dining Room, Kitchen, First Floor Landing, 3 Bedrooms & a Stylish 3 Piece Bathroom, Second Floor Loft Room, Enclosed South Facing Courtyard, Council Tax Band B, No Onward Chain Involved

Storm Porch
Tiled floor

Hallway
Double glazed window to front with matching side panels, tiled floor, radiator, stairs to first floor landing with storage under

Lounge & Dining Room
30'2 x 12'3
Open plan Lounge & Dining room, double glazed walk in bay window to front, Two radiators, double glazed sliding doors to rear, decorative cornice style ceiling, gas fire set in feature surround

Kitchen
15'3 x 7'4
Fitted base and wall units with round edge worktops, stainless steel sink with mixer taps & tiled splashbacks, electric double oven, ceramic hob, plumbing for washing machine, double glazed windows to side & rear, wooden laminate flooring

Landing
Fixed staircase to Second floor

Bedroom 1
14'8 x 11'5
Double glazed window to front, radiator, chimney breast, built in wardrobes, wooden laminate flooring

Bedroom 2
11'6 x 11'5
Double glazed window to rear, radiator, chimney breast

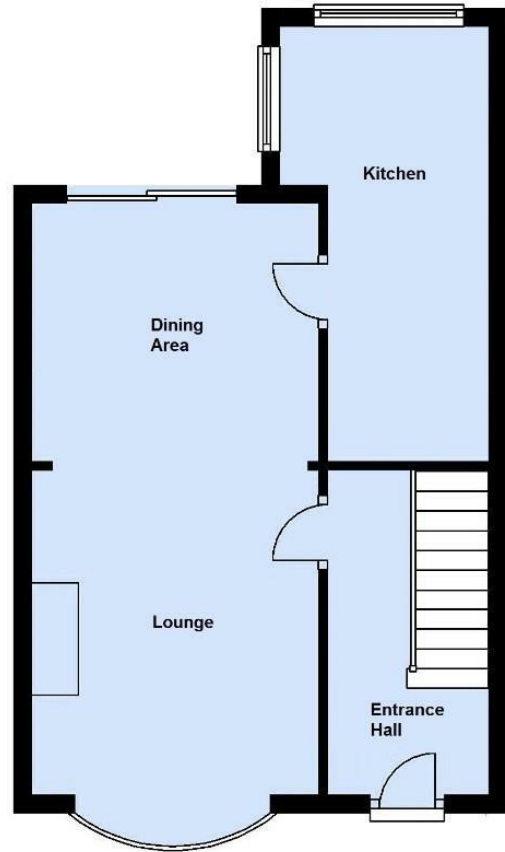
Bedroom 3
7'0 x 6'5
Double glazed window to front, radiator, wooden laminate flooring

Bathroom
Fitted with a 3 piece suite comprising low level wc, panelled bath, pedestal wash hand basin, tiled floor, tiled walls, radiator, double glazed window to rear

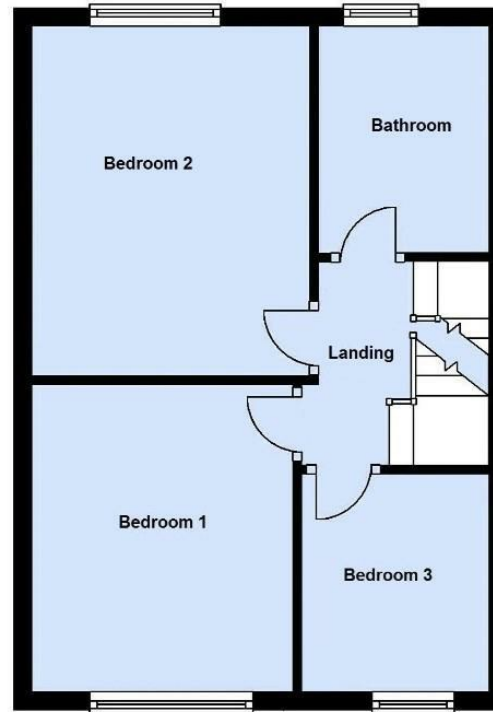
Loft Room
17'2 x 16'2
Fixed staircase from the first floor, wooden laminate flooring, velux windows to front & rear, radiator

Outside
Garden terraced to front, Enclosed South facing rear courtyard, brick built walls, artificial grass

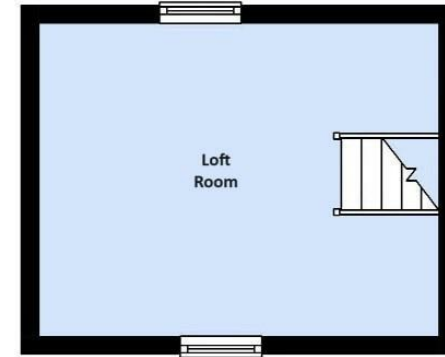
Ground Floor



First Floor



Second Floor



These particulars are intended to give a fair and reliable description of the property but no responsibility for any inaccuracy or error can be accepted and do not constitute an offer or contract. We have not tested any services or appliances (including central heating if fitted) referred to in these particulars and the purchasers are advised to satisfy themselves as to the working order and condition. If a property is unoccupied at any time there may be reconnection charges for any switched off/disconnected or drained services or appliances - All measurements are approximate.

25-27 Highfield Road, Blackpool, FY4 2JD | 01253 362640
| blackpool@hunters.com

