



**HUNTERS**<sup>®</sup>  
HERE TO GET *you* THERE

Bond Street, Blackpool, FY4 1BW | Price £155,000  
Call us today on 01253 362640



### Thinking of Selling?

If you are thinking of selling your home or just curious to discover the value of your property, Hunters would be pleased to provide free, no obligation sales and marketing advice. Even if your home is outside the area covered by our local offices we can arrange a Market Appraisal through our national network of Hunters estate agents.

**\*\*IMMACULATE END TERRACED HOUSE WITH 4 DOUBLE BEDROOMS & 2 STYLISH BATHROOMS, VIEWING RECOMMENDED\*\*** Hunters are pleased to offer For Sale this 4 Bed End Terraced House consisting Entrance Hallway, Open Plan Lounge & Modern Dining Kitchen, Ground Floor Bedroom & Ensuite Shower Room. On the First Floor there are 3 Further Double Bedrooms with a Stylish 4 Piece Bathroom, West Facing Enclosed Rear Yard, Viewing Highly Recommended, No Onward Chain Involved, Council Tax Band A

**ENTRANCE HALL**

Entrance door, stairs to first floor landing

**OPEN PLAN LOUNGE & DINING KITCHEN**

11'2" x 27'7"

Open plan Lounge/TV Room & Bar Area, double glazed walk in bay window to front, two radiators, decorative cornice style ceiling, tiled floor, Fitted with a matching range of modern base and wall units with composite worktops & matching upstands, stainless steel undermounted sink with mixer taps, built in oven, ceramic hob, integrated fridge freezer, integrated washing machine, integrated dishwasher, concealed wall mounted boiler, double glazed window to side, double glazed double doors to side, tiled flooring

**REAR HALLWAY**

Tiled floor, door to rear yard

**DOWNSTAIRS BEDROOM (1)**

11'2" x 12'6"

double glazed window to front, decorative cornice style ceiling, radiator, built in storage, cladding to walls

**ENSUITE SHOWER ROOM**

6'3" x 5'11"

Fitted with a 3 Piece suite comprising lo level wc, shower, vanity wash hand basin, tiled walls, tiled floor

**LANDING**

**BEDROOM 2**

12'8" x 11'8"

Two double glazed window to front, radiator, built in storage, cladding to walls

**BEDROOM 3**

11'0" x 9'10"

Double glazed velux window to rear, radiator, built in storage, cladding to walls

**BEDROOM 4**

16'5 x 12'7

Double glazed window to rear, radiator, decorative cornice style ceiling, cladding to walls

**BATHROOM**

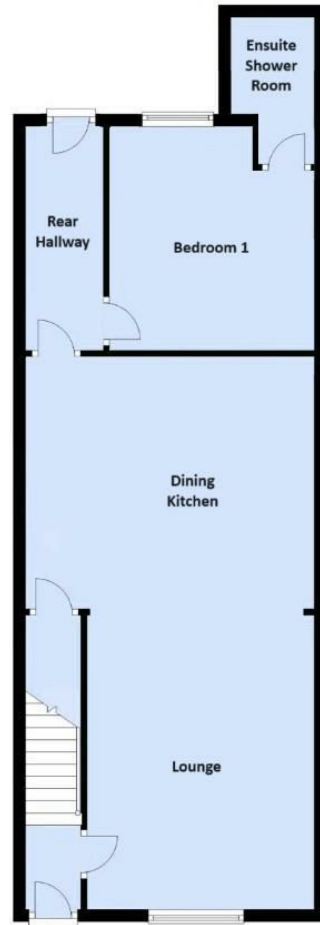
7'9" x 10'2"

Fitted with a modern 4 piece suite comprising low level wc, pedestal wash hand basin, panelled bath, walk in shower enclosure, tiled walls, tiled floor, double glazed window to rear

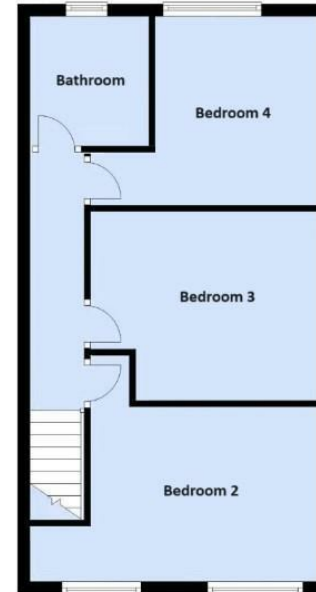
**OUTSIDE**

West facing yard, timber decking seating area, gated access to rear

### Ground Floor



### First Floor



These particulars are intended to give a fair and reliable description of the property but no responsibility for any inaccuracy or error can be accepted and do not constitute an offer or contract. We have not tested any services or appliances (including central heating if fitted) referred to in these particulars and the purchasers are advised to satisfy themselves as to the working order and condition. If a property is unoccupied at any time there may be reconnection charges for any switched off/disconnected or drained services or appliances - All measurements are approximate.

25-27 Highfield Road, Blackpool, FY4 2JD | 01253 362640  
| blackpool@hunters.com

**HUNTERS**<sup>®</sup>  
HERE TO GET *you* THERE