

Located at the end of a delightful cul-de-sac is this well presented semi detached three bedroom home which benefits from en suite facilities to the master bedroom, sunny aspect to the rear and garage with parking in front.

The Accommodation Comprises

Front door to:

Entrance Hall

Stairs to first floor, window to side elevation.

Cloakroom

Obscured window to front elevation, close coupled WC, pedestal wash hand basin and consumer unit to wall.

Lounge 18' 5" x 12' 1" (5.61m x 3.68m)

Window to front elevation, under stairs storage cupboard, feature modern fireplace.

Dining Room 11' 1" x 8' 0" (3.38m x 2.44m)

Double opening doors to rear garden, laminate flooring, door to:

Kitchen 11' 8" x 7' 2" (3.55m x 2.18m)

Fitted with a range of base cupboards and matching eye level units, roll top worksurface, tiled surround, integrated dishwasher, washing machine and fridge freezer, integrated electric oven and induction hob, cupboard housing boiler, under unit lighting, tiled flooring, window and door to rear garden.

First Floor Landing

Access to loft space with light.

Bedroom One 13' 1" x 8' 4" (3.98m x 2.54m) Plus Wardrobe

Window to front elevation, built-in wardrobe, door to:

En Suite 8' 8" x 4' 0" (2.64m x 1.22m)

Close coupled WC, pedestal wash hand basin, double shower cubicle with mains shower, light and shaver socket.

Bedroom Two 11' 0" x 8' 8" (3.35m x 2.64m)

Window to rear elevation, laminate flooring.

Bedroom Three 10' 0" x 6' 7" (3.05m x 2.01m) Maximum Measurements

Window to rear elevation.

Bathroom 8' 8" x 5' 1" (2.64m x 1.55m)

Close coupled WC, pedestal wash hand basin, panelled bath with mixer tap, extractor fan, tiled flooring.

Outside

To the front of the property there is off-road parking and access to garage with up and over door and courtesy door to side, lawned garden, pathway to front door, side access to rear garden which enjoys a sunny aspect and is enclosed by panelled fencing and laid to lawn with patio area, outside lighting, water tap and power sockets for hot tub to remain.

General Information

Construction - Traditional

Water Supply – Portsmouth Water

Electric Supply – Mains

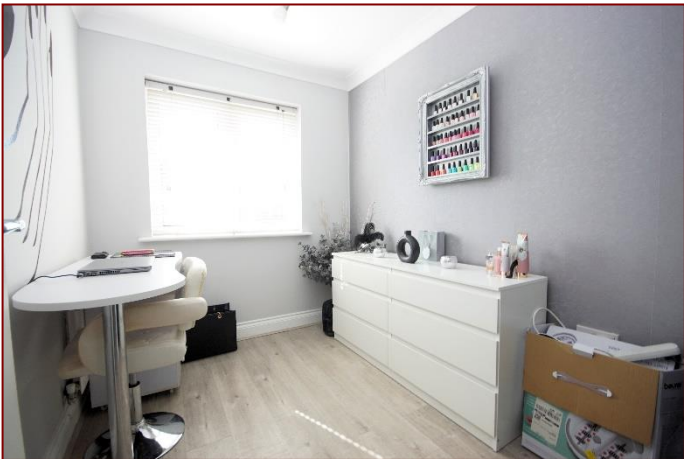
Gas Supply - Mains

Sewerage - Mains

Mobile & Broadband coverage - Please check via:

<https://checker.ofcom.org.uk/>

Flood risk - Please check via: <https://www.gov.uk/check-long-term-flood-risk>





Tenure: Freehold
Council Tax Band: D

Score	Energy rating	Current	Potential
92+	A		
81-91	B		89 B
69-80	C	76 C	
55-68	D		
39-54	E		
21-38	F		
1-20	G		

Disclaimer: These particulars are set out as a general outline in accordance with the Consumer Protection from Unfair Trading Regulations 2008 (CPR's) and Business Protection from Misleading Marketing Regulations 2008 (BPR's) only for the guidance of intending purchasers or lessees, and do not constitute any part of an offer or contract. Details are given without any responsibility, and any intending purchasers, lessees or third parties should not rely on them as statements or representations of fact, but must satisfy themselves by inspection or otherwise as to the correctness of each of them.

We have not carried out a structural survey and the services, appliances and specific fittings have not been tested. All photographs, measurements, floor plans and distances referred to are given as a guide only and should not be relied upon for the purchase of carpets or any other fixtures or fittings. Gardens, roof terraces, balconies and communal gardens as well as tenure and lease details cannot have their accuracy guaranteed for intending purchasers. Lease details, service ground rent (where applicable) are given as a guide only and should be checked and confirmed by your solicitor prior to exchange of contracts.

No person in the employment of Fenwicks Estates Ltd has any authority to make any representation or warranty whatever in relation to this property. Purchase prices, rents or other prices quoted are correct at the date of publication and, unless otherwise stated, exclusive of VAT.

Data Protection: We retain the copyright in all advertising material used to market this Property.
Money Laundering Regulations 2017: Intending purchasers will be required to produce identification documentation once an offer is accepted.



DRAFT DETAILS

£379,995
Bryson Close, Lee-On-The-Solent, PO13 8FB

Fenwicks - Lee on the Solent Office: 02392 551 199 www.fenwicks-estates.co.uk

Fenwicks
THE INDEPENDENT ESTATE AGENT