

Situated close to the seafront and tucked away in a pleasant cul de sac, this extended three bedroom end of terrace house enjoys a rear garden and garage situated in a block.

The Accommodation Comprises

Double glazed sliding door to;

Entrance Porch

Tiled flooring, UPVC double glazed front door to;

Entrance Hall

Tile flooring and cupboard housing electric meter.

Cloakroom 6' 10" x 6' 6" (2.08m x 1.98m)

Close coupled W.C, wash hand basin with tiled splash back, recess and plumbing for washing machine with roll top work surface over.

Lounge 20' 2" x 12' 2" (6.14m x 3.71m)

Window to front elevation, stairs to first-floor.

Kitchen/Dining Room 19' 11" x 15' 10" (6.07m x 4.82m)

An irregular shaped room, window to front elevation, twin French style doors to rear garden. The kitchen area is fitted with a range of base cupboards and matching eye level units, solid wood work surface, stainless steel sink unit with mixer tap, space for range style oven, extractor hood over, integrated dishwasher, space for American fridge/freezer door to;

Sitting Room/Bedroom Four 12' 2" x 7' 5" (3.71m x 2.26m)

Window to rear elevation.

Landing

Access to loft space, cupboard housing combination boiler.

Bedroom One 12' 0" x 9' 1" (3.65m x 2.77m)

Window to front elevation and built-in cupboard.

Bedroom Two 9' 1" x 7' 10" (2.77m x 2.39m)

Fitted wardrobe, window to rear elevation enjoying views over the Alver Valley.

Bedroom Three 9' 1" x 6' 8" (2.77m x 2.03m)

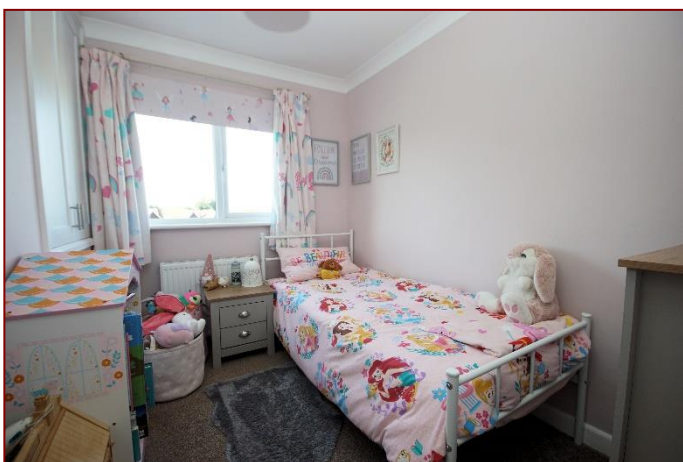
Window to front elevation, built-in storage cupboard with hanging rail.

Bathroom 7' 11" x 7' 9" (2.41m x 2.36m)

Inset spotlighting, two obscured windows to rear elevation, close coupled W.C, pedestal wash hand basin with mixer tap, bath with mains shower over, radiator incorporating heated towel rail.

Outside

The rear garden is enclosed and benefits from side pedestrian access. There are areas laid to lawn, raised borders and decking seating area. To the front of the property is a further garden. There is a garage situated in nearby block.





Tenure: Freehold

Council Tax Band: C

Awaiting EPC

Disclaimer: These particulars are set out as a general outline in accordance with the Consumer Protection from Unfair Trading Regulations 2008 (CPR's) and Business Protection from Misleading Marketing Regulations 2008 (BPR's) only for the guidance of intending purchasers or lessees, and do not constitute any part of an offer or contract. Details are given without any responsibility, and any intending purchasers, lessees or third parties should not rely on them as statements or representations of fact, but must satisfy themselves by inspection or otherwise as to the correctness of each of them.

We have not carried out a structural survey and the services, appliances and specific fittings have not been tested. All photographs, measurements, floor plans and distances referred to are given as a guide only and should not be relied upon for the purchase of carpets or any other fixtures or fittings. Gardens, roof terraces, balconies and communal gardens as well as tenure and lease details cannot have their accuracy guaranteed for intending purchasers. Lease details, service ground rent (where applicable) are given as a guide only and should be checked and confirmed by your solicitor prior to exchange of contracts.

No person in the employment of Fenwicks Estates Ltd has any authority to make any representation or warranty whatever in relation to this property. Purchase prices, rents or other prices quoted are correct at the date of publication and, unless otherwise stated, exclusive of VAT.

Data Protection: We retain the copyright in all advertising material used to market this Property.

Money Laundering Regulations 2017: Intending purchasers will be required to produce identification documentation once an offer is accepted.



£325,000

Lancaster Close, Lee-On-The-Solent, PO13 9AY

DRAFT DETAILS

Fenwicks

THE INDEPENDENT ESTATE AGENT

Fenwicks - Lee on the Solent Office: 02392 551 199 www.fenwicks-estates.co.uk