



Island Wall, Whitstable

£500,000

99 Island Wall

Nestled within a quiet residential street just a stone's throw away from the glistening shorelines, this exquisite three-bedroom mid-terraced cottage boasts a harmonious blend of contemporary elegance and timeless charm. Immaculately maintained over three floors, this residence presents a luxurious retreat for the discerning homeowner.

Upon entrance, the allure of this property is immediately apparent as you are greeted by a light-filled spacious living area, invoking a sense of warmth and comfort. The welcoming ambience is further enhanced by two open fires, creating a cosy setting for unwinding after a long day.

The modern fitted kitchen is sure to inspire your inner chef with its sleek design and high-end appliances, providing a perfect space for culinary creations. The island wall is a standout feature, offering both functionality and style, making this space a focal point for entertaining guests or enjoying family meals.

Boasting three well-appointed bedrooms, including a master bed with an en-suite bathroom, this home offers ample space for relaxation and privacy. The roll top bath adds a touch of luxury to the main bathroom, providing a tranquil sanctuary for self-care routines.

Outside, the gardens are laid to lawn and provide a serene backdrop for enjoying the outdoors. Whether basking in the sunshine or hosting al fresco gatherings, this space offers endless possibilities for outdoor enjoyment.



**Entrance**

Leading to

Lounge

26' 3" x 11' 11" (8.00m x 3.63m)

Kitchen

14' 11" x 11' 1" (4.55m x 3.38m)

First Floor

Leading to

Bedroom

11' 5" x 10' 8" (3.48m x 3.25m)

En Suite

5' 1" x 4' 11" (1.55m x 1.50m)

Bathroom

8' 7" x 5' 2" (2.62m x 1.57m)

Bedroom

11' 7" x 6' 6" (3.54m x 1.98m)

Second Floor

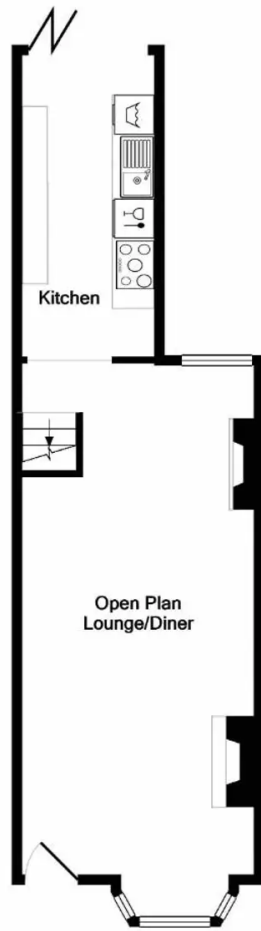
Leading to

Bedroom

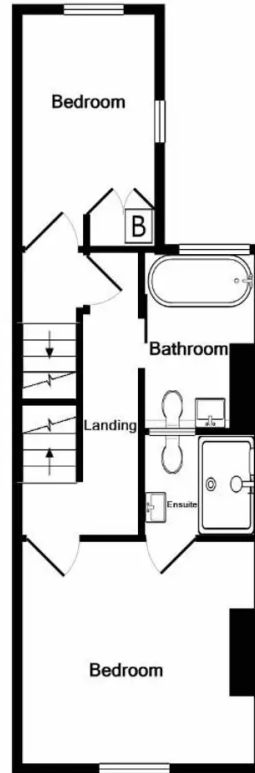
12' 3" x 11' 5" (3.73m x 3.48m)

Identification checks Should a purchaser(s) have an offer accepted on a property marketed by Miles & Barr, they will need to undertake an identification check. This is done to meet our obligation under Anti Money Laundering Regulations (AML) and is a legal requirement. We use a specialist third party service to verify your identity. The cost of these checks is £60 inc. VAT per purchase, which is paid in advance, when an offer is agreed and prior to a sales memorandum being issued. This charge is non-refundable under any circumstances.

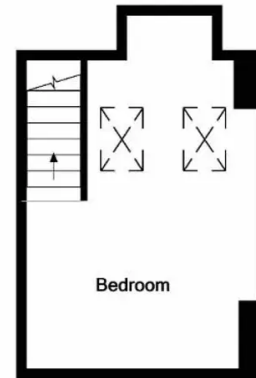




GROUND FLOOR
APPROX. FLOOR
AREA 35.4 SQ.M.
(381 SQ.FT.)



1ST FLOOR
APPROX. FLOOR
AREA 31.4 SQ.M.
(338 SQ.FT.)



2ND FLOOR
APPROX. FLOOR
AREA 16.2 SQ.M.
(174 SQ.FT.)

TOTAL APPROX. FLOOR AREA 83.0 SQ.M. (894 SQ.FT.)
Made with Metropix ©2020



Miles & Barr

87 High Street, Whitstable - CT5 1AY

01227 277 254

whitstable@milesandbarr.co.uk

www.milesandbarr.co.uk/

We have not carried out a structural survey, appliances & services are untested, dimensions are approximate, floor plans are not to scale. Legal advice should be taken to verify fixtures/fittings/planning/alterations and/or lease details before proceeding. On acceptance of an offer, purchasers must undertake ID checks; this is a legal requirement in accordance with Anti Money Laundering Regulations. We use a specialist third party company, the cost is £60 inc VAT per purchase, once offer is agreed and prior to issuing the sales memorandum. This Charge is non-refundable For Referral Fee Disclosure visit: milesandbarr.co.uk/referral-fee-disclosure