



Firecrest Road, Gabriel Park, RG22 5UL

£695,000

EXECUTIVE DETACHED PROPERTY • 4 DOUBLE BEDROOMS • EXTENDED • DOUBLE GARAGE •
 GENEROUS & FLEXIBLE ACCOMMODATION • WALKING DISTANCE OF GREEN SPACE



01256 321777



www.thepropertyexplorer.co.uk

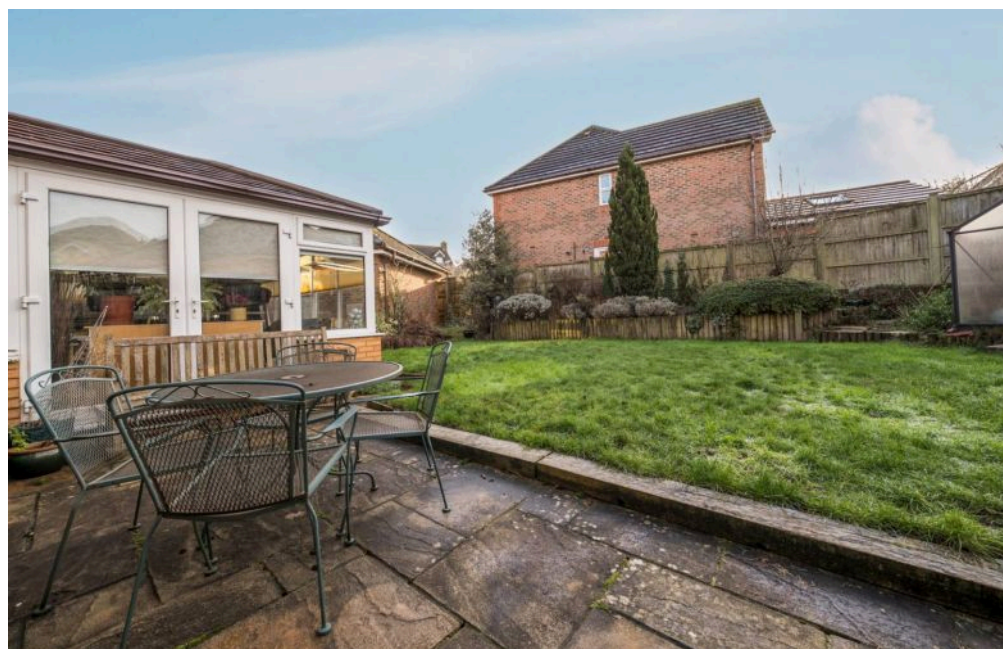
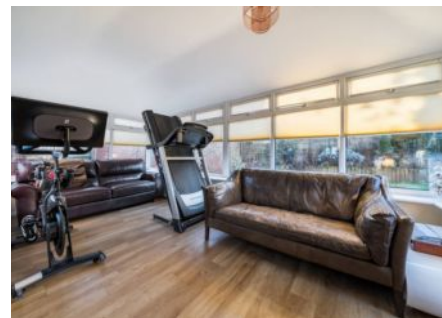
the property
explorer

We are delighted to present this extended four bedroom executive detached Bryant built family home, perfectly positioned within the ever popular Gabriel Park development in Kempshott. Owned by the current family since new, the property has been thoughtfully reconfigured and enhanced over time, creating an ideal home for modern family living. Perfectly set within a friendly and family orientated development, the property enjoys a wonderful sense of community and is within easy walking distance of attractive green spaces, ideal for dog walking and outdoor leisure.

Council Tax band: F

Tenure: Freehold

EPC Energy Efficiency Rating: C



- EXECUTIVE DETACHED PROPERTY
- 4 DOUBLE BEDROOMS
- EXTENDED
- DOUBLE GARAGE
- GENEROUS & FLEXIBLE ACCOMMODATION
- WALKING DISTANCE OF GREEN SPACE





You can include any text here. The text can be modified upon generating your brochure.