



5 Canterbury Close, Basingstoke, RG22 4PW

Price Guide £625,000 Freehold

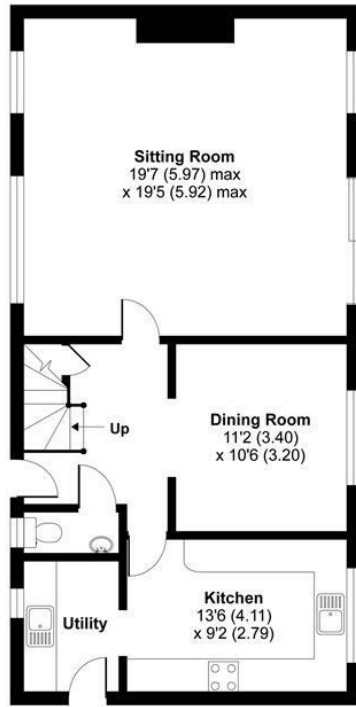


THE PROPERTY
EXPLORER

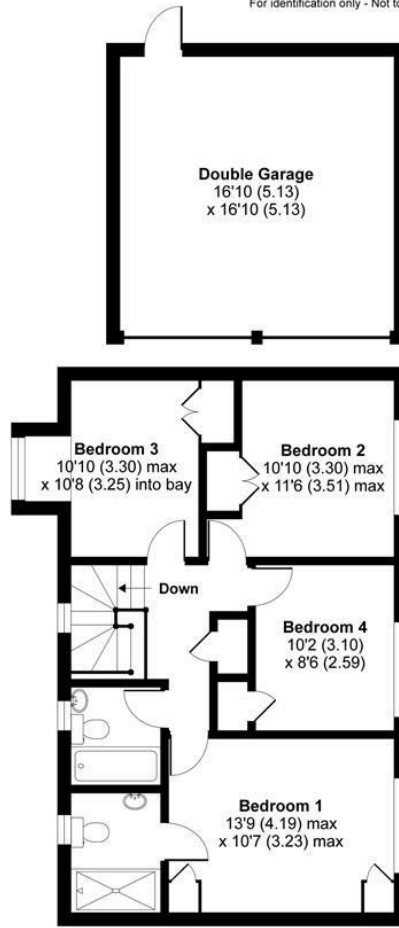
Canterbury Close, Basingstoke, RG22

Approximate Area = 1478 sq ft / 137.3 sq m
Garage = 283 sq ft / 26.2 sq m
Total = 1761 sq ft / 163.5 sq m

For identification only - Not to scale



GROUND FLOOR



FIRST FLOOR



Floor plan produced in accordance with RICS Property Measurement Standards incorporating International Property Measurement Standards (IPMS2 Residential). © nichcom 2021. Produced for Property Explorer. REF: 782472



These particulars, whilst believed to be accurate are set out as a general outline only for guidance and do not constitute any part of an offer or contract. Intending purchasers should not rely on them as statements of representation of fact, but must satisfy themselves by inspection or otherwise as to their accuracy. No person in this firm's employment has the authority to make or give any representation or warranty in respect of the property.

Arena Business Centre, Suite GF11 The Square, Basing View, Basingstoke, Hampshire, RG21 4EB
Tel: 01256 321777 Email: hello@thepropertyexplorer.co.uk <https://www.thepropertyexplorer.co.uk>