

## 8 Simmons Walk, Basingstoke – RG21 4BS

£290,000 Freehold

Freehold • 3 Bedrooms • Parking • Garage • No Onward Chain • Council Tax C • Close to town • Close to transport links

01256 321777

[www.thepropertyexplorer.co.uk](http://www.thepropertyexplorer.co.uk)

the property  
**explorer**



EXPLORER – Pleased to bring to the market this spacious 3 bedroom terraced family home, ideally situated within the sought-after Riverdene development, offered to the market with no onward chain.

Council Tax band: C

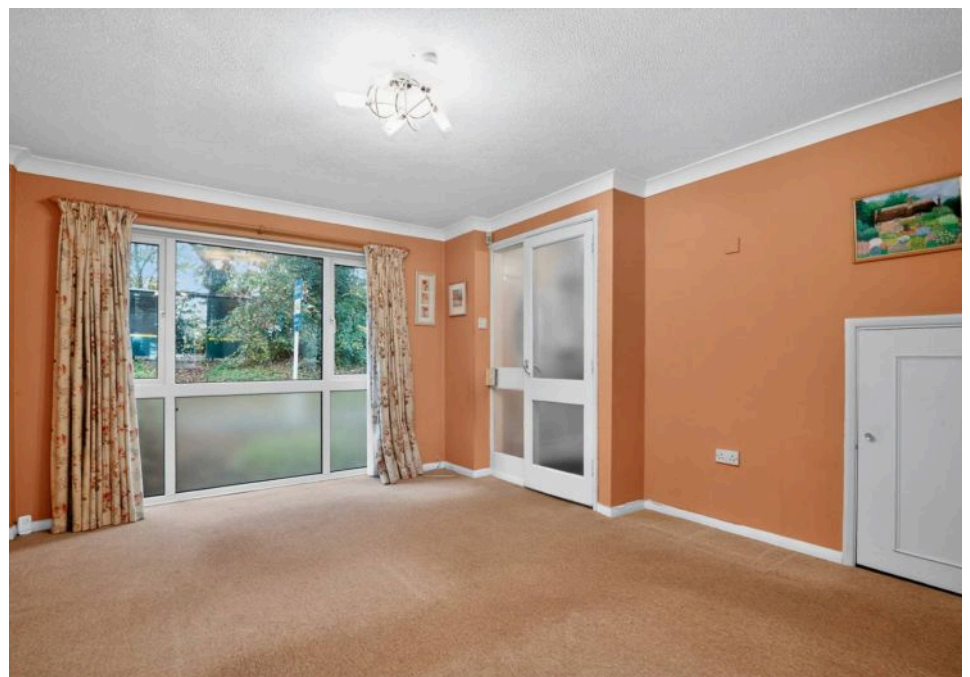
Tenure: Freehold

EPC Energy Efficiency Rating: D

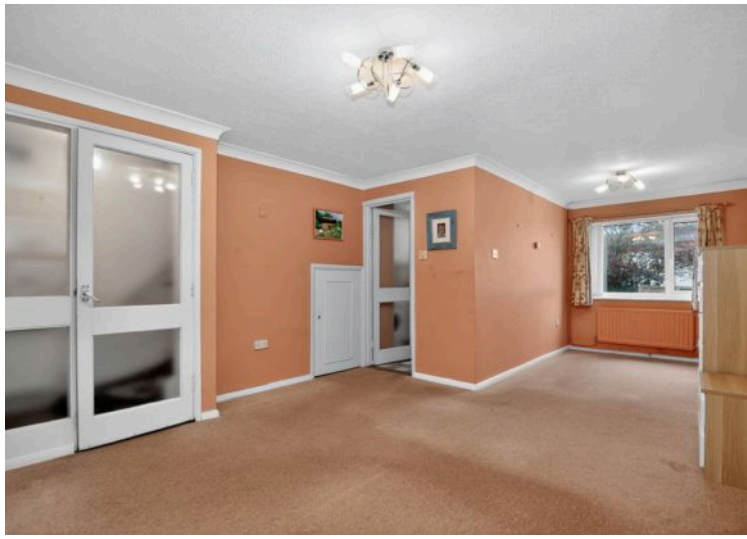
EPC Environmental Impact Rating:



- Freehold
- 3 Bedrooms
- Parking
- Garage
- No Onward Chain
- Council Tax C
- Close to town
- Close to transport links

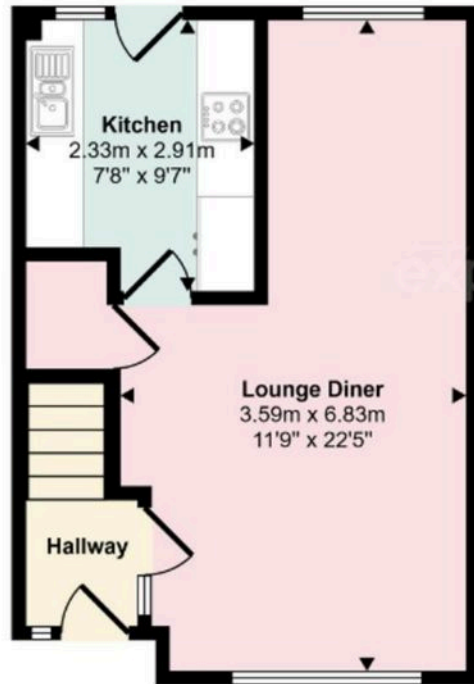
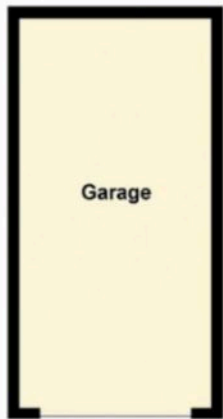




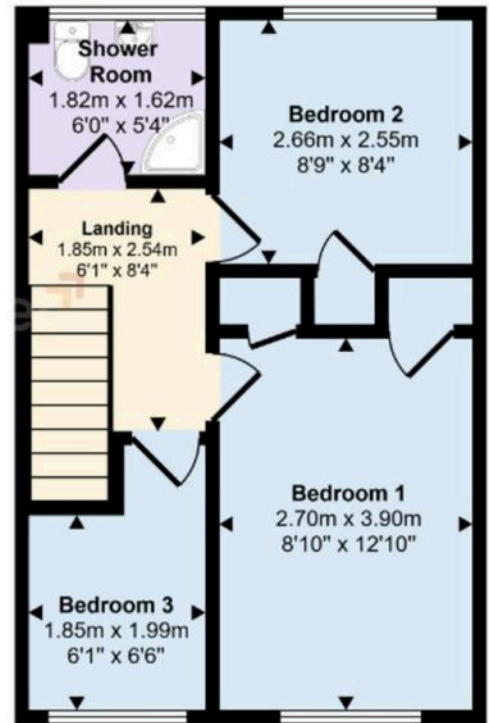




Approx Gross Internal Area  
64 sq m / 693 sq ft



Ground Floor  
Approx 31 sq m / 331 sq ft



First Floor  
Approx 34 sq m / 362 sq ft

This floorplan is only for illustrative purposes and is not to scale. Measurements of rooms, doors, windows, and any items are approximate and no responsibility is taken for any error, omission or mis-statement. Icons of items such as bathroom suites are representations only and may not look like the real items. Made with Made Snappy 360.

You can include any text here. The text can be modified upon generating your brochure.