

## Regent Court Norn Hill, Basingstoke – RG21 4HP

£200,000 Leasehold

98 Year Lease • Service Charge Block and Estate Charge Combined £1582 every 6 months • Ground Rent £250 p/a • EPC D • Council Tax C • Chain Free • Garden • Allocated Parking



01256 321777



[www.thepropertyexplorer.co.uk](http://www.thepropertyexplorer.co.uk)

the property  
**explorer**



Explorer - Delighted to offer this 2 double bedroom ground floor apartment conveniently situated within walking distance of Basingstoke Town Centre. Viewings highly recommended by the vendors sole agents.

Council Tax band: C

Tenure: Leasehold

EPC Energy Efficiency Rating: D

EPC Environmental Impact Rating:



- 98 Year Lease
- Service Charge Block and Estate Charge Combined £1582 every 6 months
- Ground Rent £250 p/a
- EPC D
- Council Tax C
- Chain Free
- Garden
- Allocated Parking





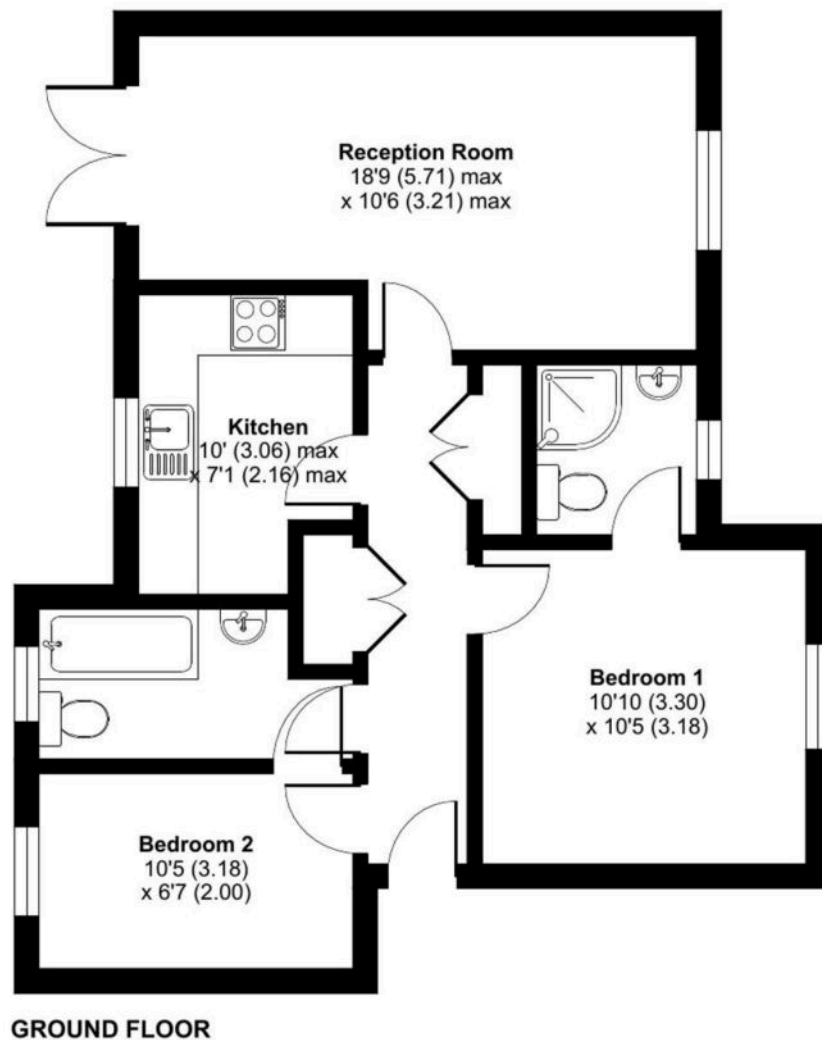




# Regent Court, Norn Hill, Basingstoke, RG21

Approximate Area = 621 sq ft / 57.7 sq m

For identification only - Not to scale



Floor plan produced in accordance with RICS Property Measurement 2nd Edition, Incorporating International Property Measurement Standards (IPMS2 Residential). © nichecom 2025. Produced for Property Explorer. REF: 1355083

You can include any text here. The text can be modified upon generating your brochure.