



48 Broadmere Road, Beggarwood – RG22 4FP

£235,000 Leasehold

1ST FLOOR • SERVICE CHARGE £1124pa • GROUND RENT £200pa • 2 ALLOCATED PARKING SPACES • ENSUITE TO MASTER • IMMACULATE CONDITION • 2 DOUBLE BEDROOMS • LEASE 134 YEARS

01256 321777

www.thepropertyexplorer.co.uk

the property
explorer

EXPLORER presents this luxury two double bedroom first-floor apartment, set within an exclusive private courtyard. The block comprises only two flats, offering a rare sense of privacy. The property features an en-suite to the principal bedroom, two allocated parking spaces, and is presented in immaculate condition throughout. Early viewings are strongly advised.

Council Tax band: C

Tenure: Leasehold

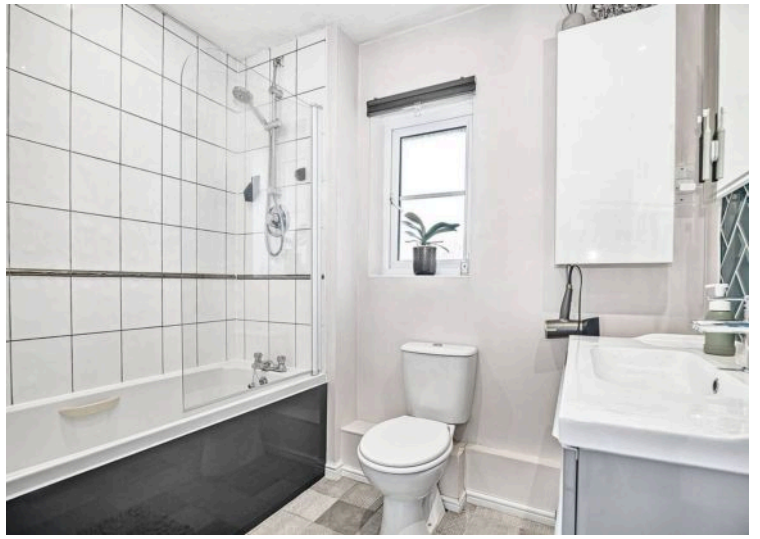
EPC Energy Efficiency Rating: D

EPC Environmental Impact Rating: C



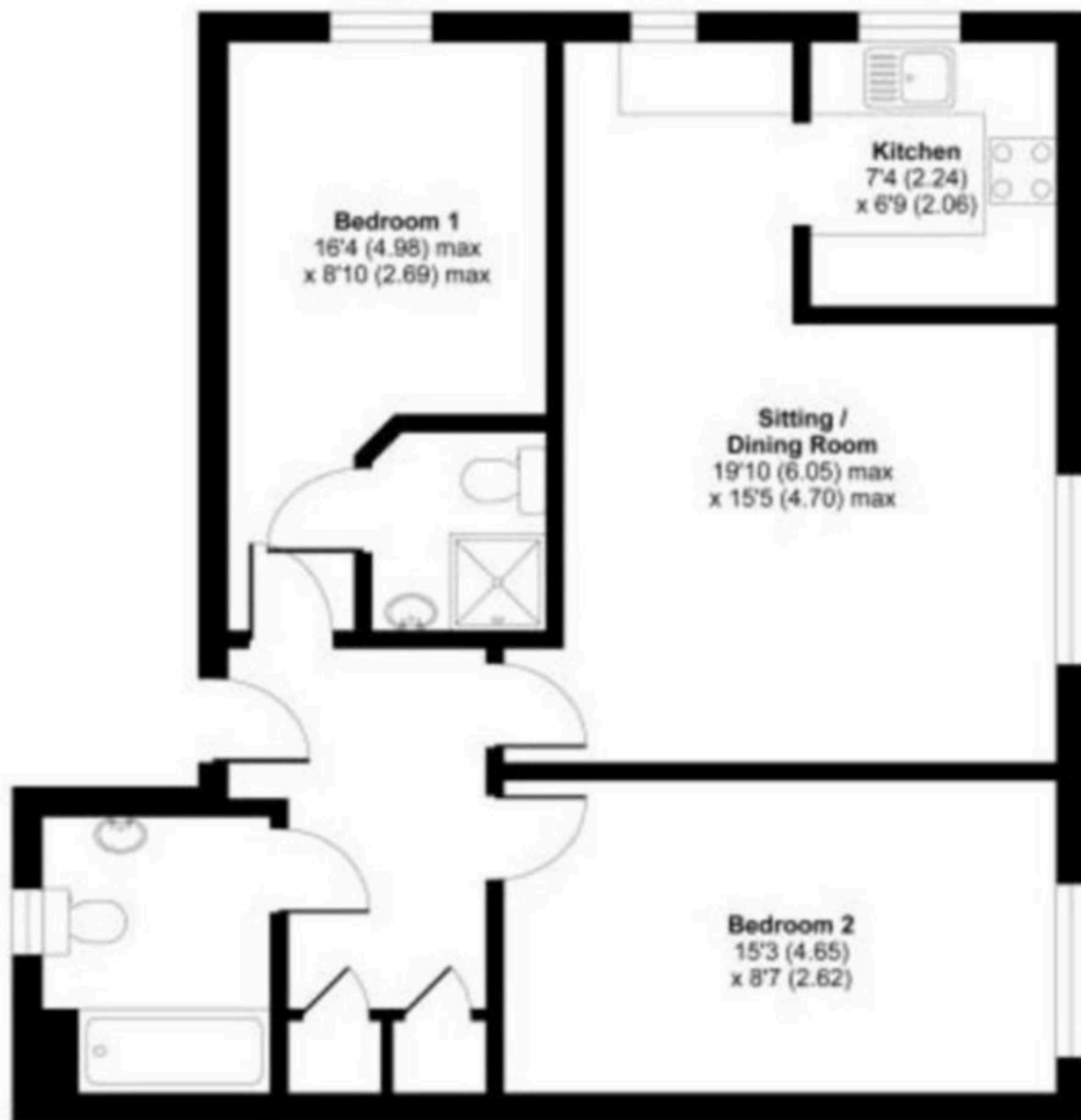
- 1ST FLOOR
- SERVICE CHARGE £1124pa
- GROUND RENT £200pa
- 2 ALLOCATED PARKING SPACES
- ENSUITE TO MASTER
- IMMACULATE CONDITION
- 2 DOUBLE BEDROOMS
- LEASE 134 YEARS





Broadmere Road, Beggarwood, Basingstoke, RG22

APPROX. GROSS INTERNAL FLOOR AREA 708 SQ FT 65.8 SQ METRES



FIRST FLOOR

You can include any text here. The text can be modified upon generating your brochure.