



14 Gershwin Court, Basingstoke - RG22 4NN

£115,000 Leasehold

OVER 55'S • 62 YEAR LEASE • CHAIN FREE • SERVICE CHARGE £254 p/m (includes building insurance and water rates) • GROUND RENT £12 P/A • AMPLE COMMUNAL PARKING

01256 321777

www.thepropertyexplorer.co.uk

the property
explorer

EXPLORER – We are delighted to bring to the market this luxurious two-bedroom, first floor, retirement maisonette for the over 55's, set in a secluded courtyard close to local amenities, with no onward chain.

Council Tax band: C

Tenure: Leasehold

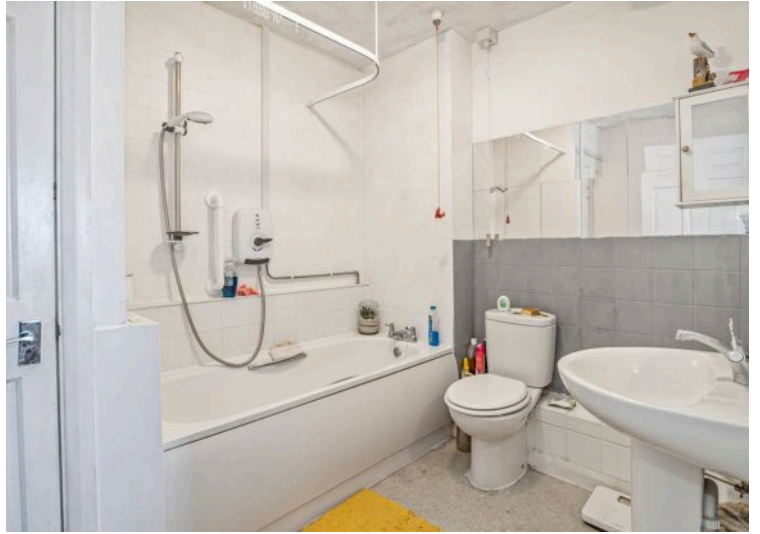
EPC Energy Efficiency Rating: D

EPC Environmental Impact Rating: C

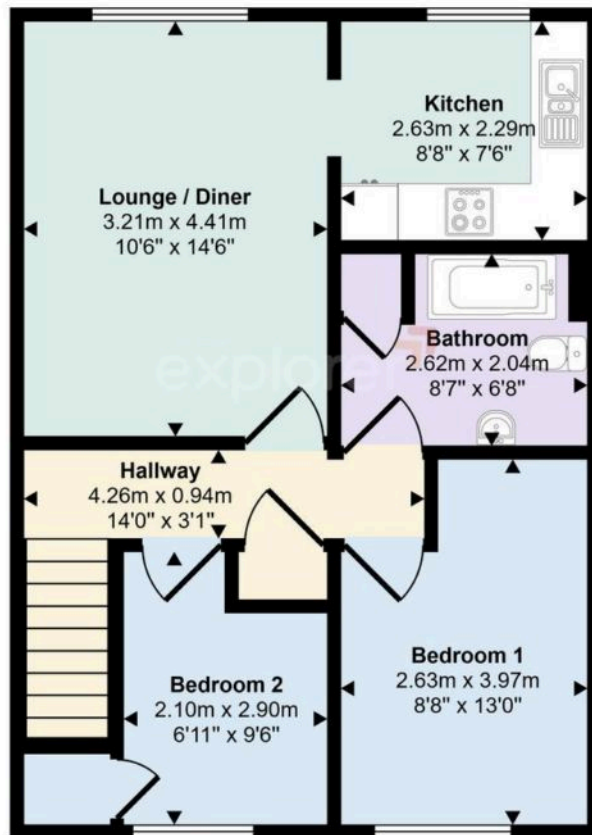


- › OVER 55'S
- › 62 YEAR LEASE
- › CHAIN FREE
- › SERVICE CHARGE £254 p/m (includes building insurance and water rates)
- › GROUND RENT £12 P/A
- › AMPLE COMMUNAL PARKING





Approx Gross Internal Area
51 sq m / 551 sq ft



Floorplan

This floorplan is only for illustrative purposes and is not to scale. Measurements of rooms, doors, windows, and any items are approximate and no responsibility is taken for any error, omission or mis-statement. Icons of items such as bathroom suites are representations only and may not look like the real items. Made with Made Snappy 360.

You can include any text here. The text can be modified upon generating your brochure.