



37 Minden Close, Chineham – RG24 8TH

£570,000 Freehold

4 BEDROOMS • CLOSE TO LOCAL PRIMARY SCHOOL • GARAGE AND DRIVEWAY • BACKS ON TO WOODED AREA •
ENSUITE • OUTBUILDING



01256 321777



www.thepropertyexplorer.co.uk

the property
explorer

EXPLORER are delighted to present to the market this beautifully maintained and thoughtfully upgraded four-bedroom detached family home, ideally positioned within a peaceful cul-de-sac in the ever-popular suburb of Chineham. An exceptional family home, tastefully updated and offering further potential — early viewing is highly recommended.

Council Tax band: E

Tenure: Freehold

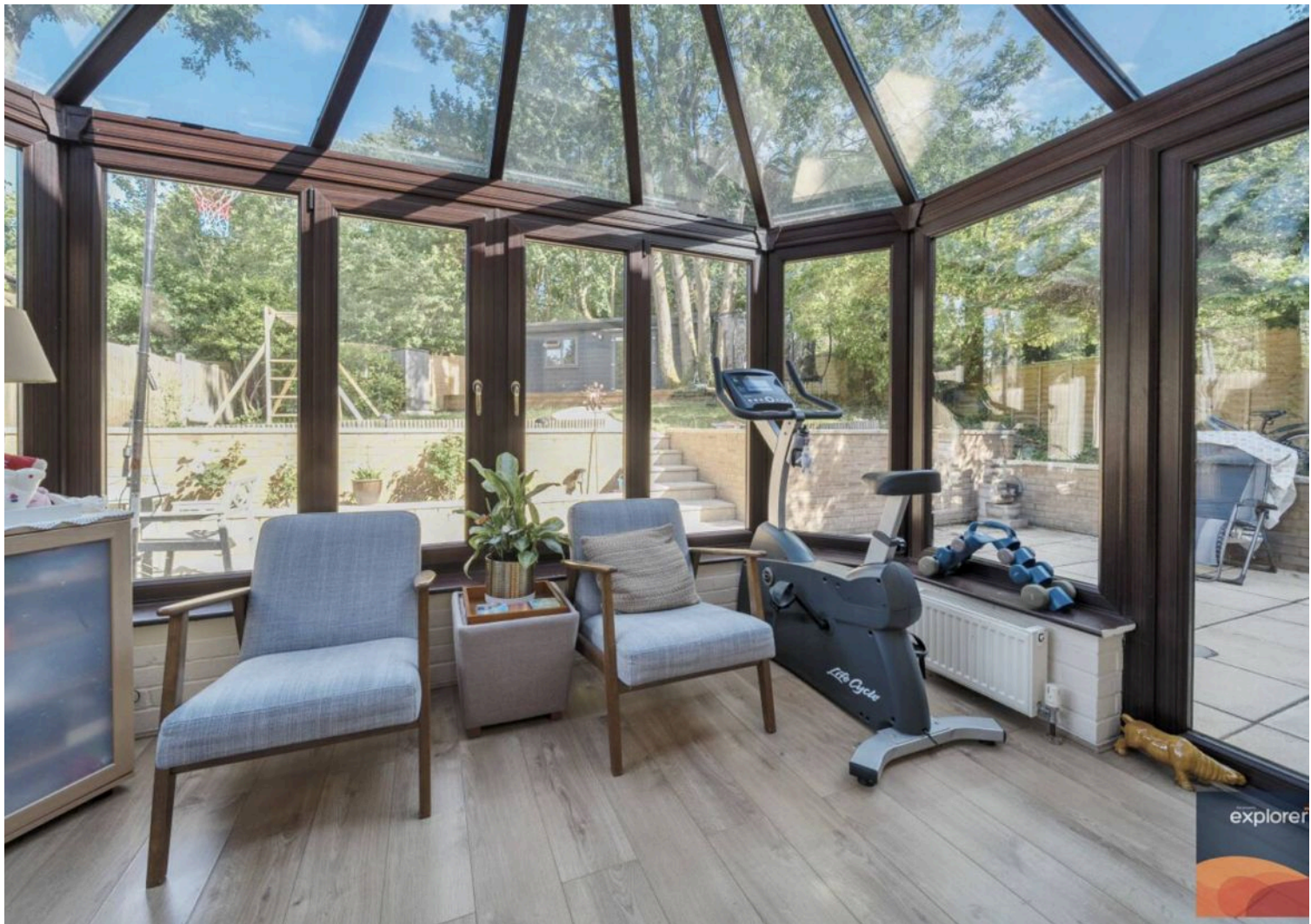
EPC Energy Efficiency Rating: C

EPC Environmental Impact Rating:

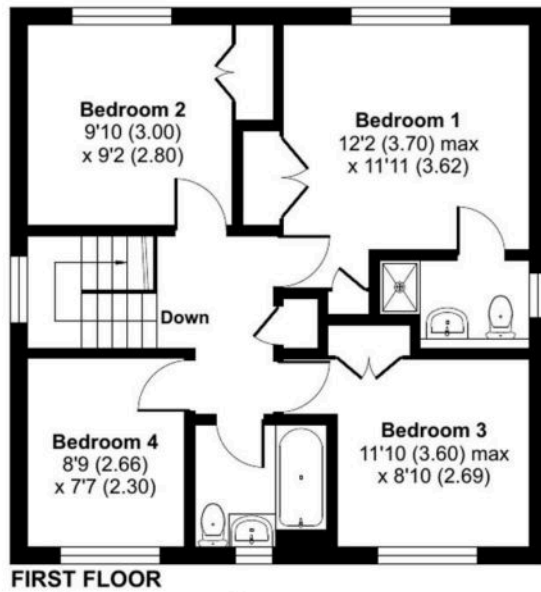


- 4 BEDROOMS
- CLOSE TO LOCAL PRIMARY SCHOOL
- GARAGE AND DRIVEWAY
- BACKS ON TO WOODED AREA
- ENSUITE
- OUTBUILDING

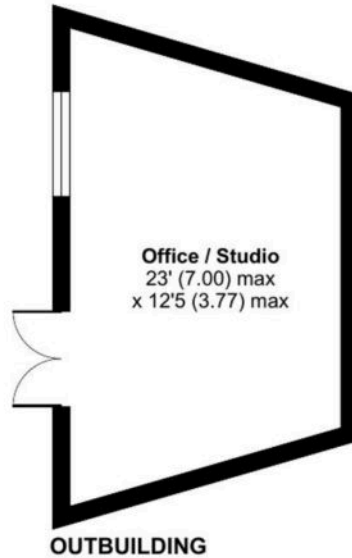
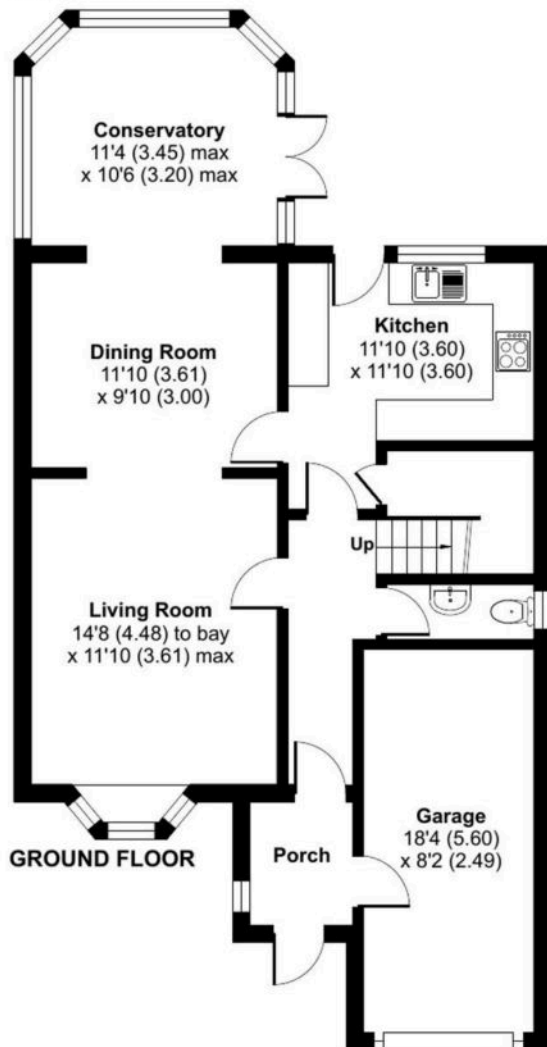




Minden Close, Chineham, Basingstoke, RG24



Approximate Area = 1318 sq ft / 122.4 sq m
 Garage = 150 sq ft / 13.9 sq m
 Outbuilding = 250 sq ft / 23.2 sq m
 Total = 1718 sq ft / 159.5 sq m
 For identification only - Not to scale



Floor plan produced in accordance with RICS Property Measurement 2nd Edition, Incorporating International Property Measurement Standards (IPMS2 Residential). © nichecom 2025. Produced for Property Explorer. REF:1315846

You can include any text here. The text can be modified upon generating your brochure.