



5 Stonehills, Steventon – RG25 3BA

£650,000 offers over Freehold

Nestled in the historic village of Steventon • 4 Bedrooms • Charming character cottage • Off road parking for several cars • Basement • Dates back to circa 1890



01256 321777



www.thepropertyexplorer.co.uk

the property
explorer

EXPLORER – Dormer Cottage is a beautifully presented four-bedroom period home, believed to have originally been a farm worker's cottage dating back to around 1890. Nestled in the historic village of Steventon – famously the birthplace of Jane Austen – the property enjoys a peaceful position within a conservation area, surrounded by rolling Hampshire countryside designated as being of great landscape value.

Council Tax band: E

Tenure: Freehold



- Nestled in the historic village of Steventon
- 4 Bedrooms
- Charming character cottage
- Off road parking for several cars
- Basement
- Dates back to circa 1890

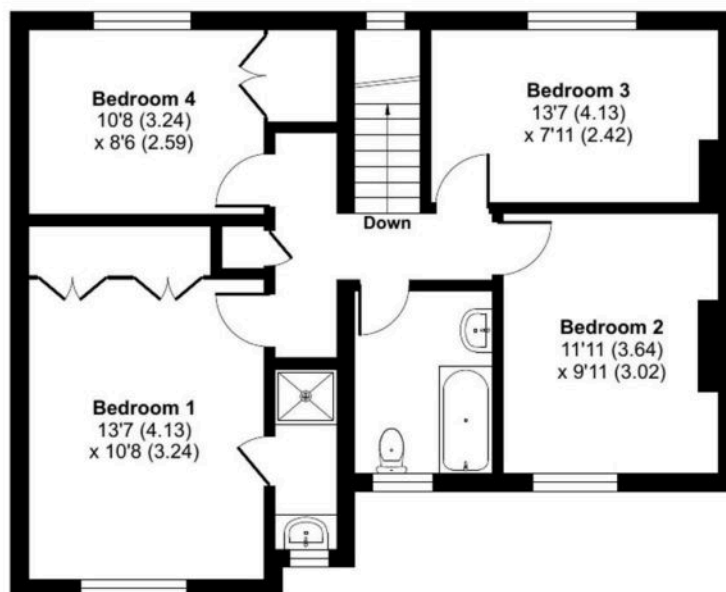




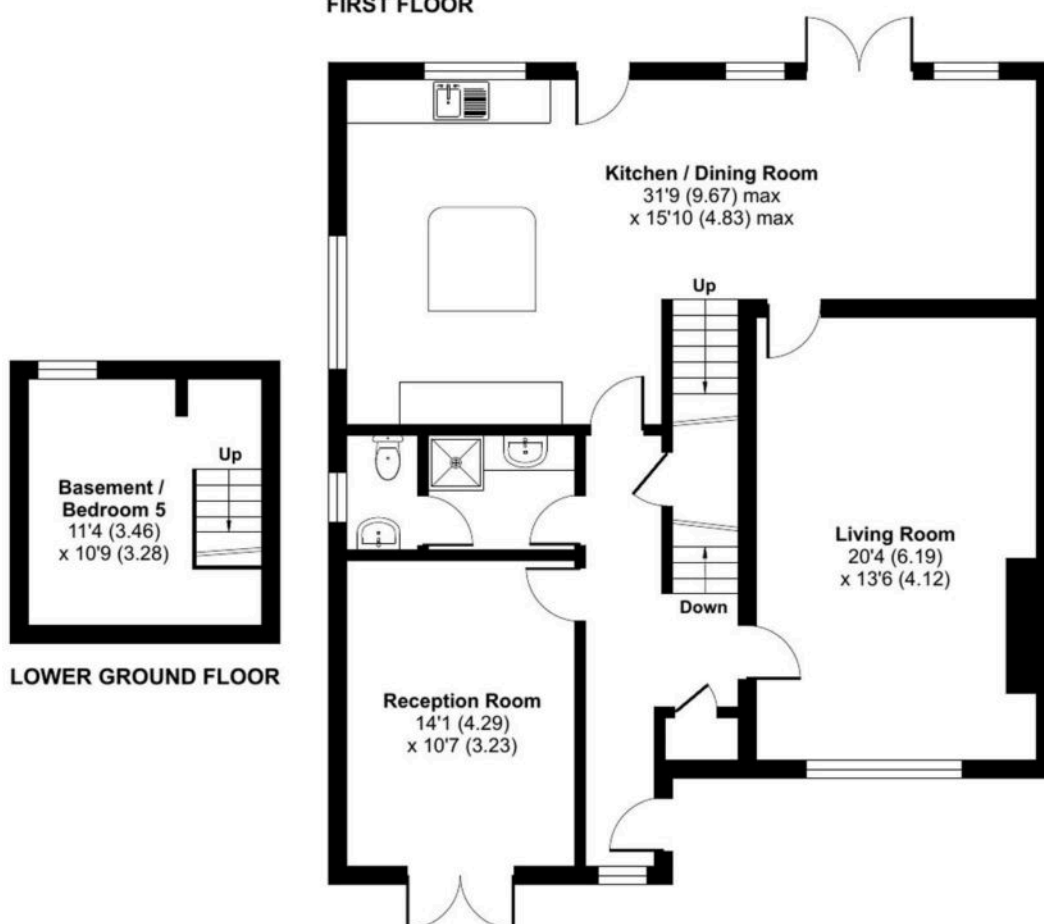
Stonehills, Steventon, Basingstoke, RG25

Approximate Area = 1894 sq ft / 175.9 sq m

For identification only - Not to scale



FIRST FLOOR



GROUND FLOOR

Floor plan produced in accordance with RICS Property Measurement 2nd Edition, Incorporating International Property Measurement Standards (IPMS2 Residential). © nichecom 2025. Produced for Property Explorer. REF: 1287910

Money Laundering Regulations: - Intending purchasers will be asked to produce identification documentation at a later stage and we would ask for your co-operation in order that there will be no delay in agreeing the sale. NB. The information provided about this property does not constitute or form part of an offer or contract, nor may it be regarded as representations. All interested parties must verify accuracy and your solicitor must verify fixtures & fittings and, where the property has been extended/converted, planning/building regulation consents. All dimensions are approximate and quoted for guidance only as are floor plans which are not to scale and their accuracy cannot be confirmed. Reference to appliances and/or services does not imply that they are necessarily in working order or fit for the purpose.