



Anstey Close, Basingstoke – RG21 3JG

£425,000 Freehold

5/6 BEDROOMS • 3 BATHROOMS • WALKING DISTANCE TO EXCELLENT LOCAL PRIMARY SCHOOL • WALKING DISTANCE TO TOWN CENTRE • CONSERVATORY • MAIN BEDROOM WITH FEATURE BALCONY

01256 321777

www.thepropertyexplorer.co.uk

the property
explorer

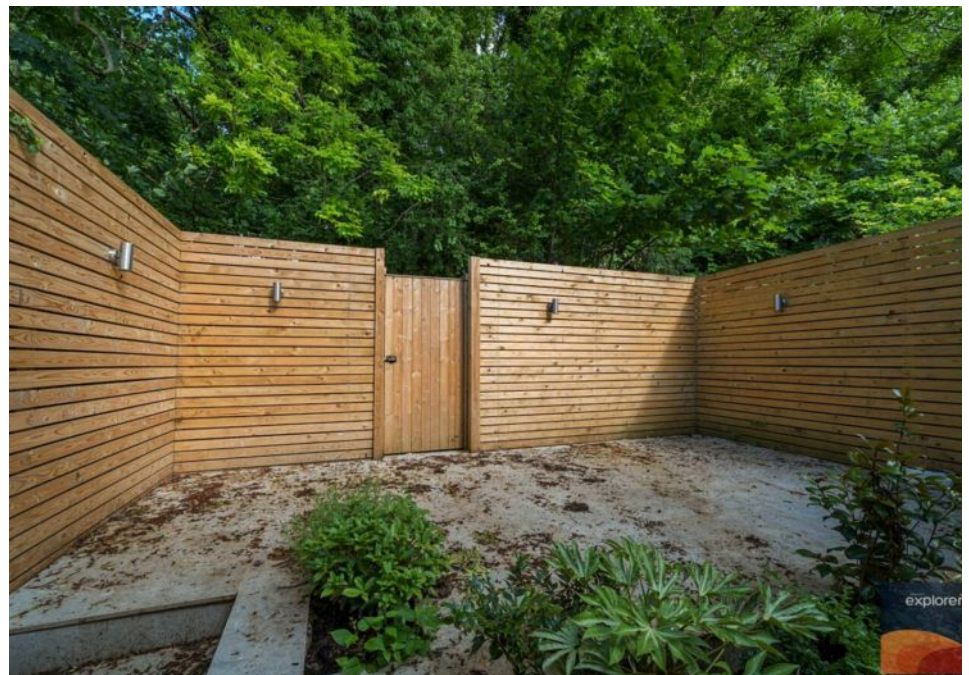
Impressive 5/6 Bedroom Extended Family Home – Tucked Away Location on Harrow Way. EXPLORER Estate Agents are delighted to offer this substantial and versatile 5/6 bedroom family home, ideally positioned in a secluded spot within the sought-after Harrow Way. Boasting a flexible layout across three spacious floors, this extended property is perfect for growing families or investors looking for adaptable accommodation close to the heart of Basingstoke.

Council Tax band: C

Tenure: Freehold



- 5/6 BEDROOMS
- 3 BATHROOMS
- WALKING DISTANCE TO EXCELLENT LOCAL PRIMARY SCHOOL
- WALKING DISTANCE TO TOWN CENTRE
- CONSERVATORY
- MAIN BEDROOM WITH FEATURE BALCONY

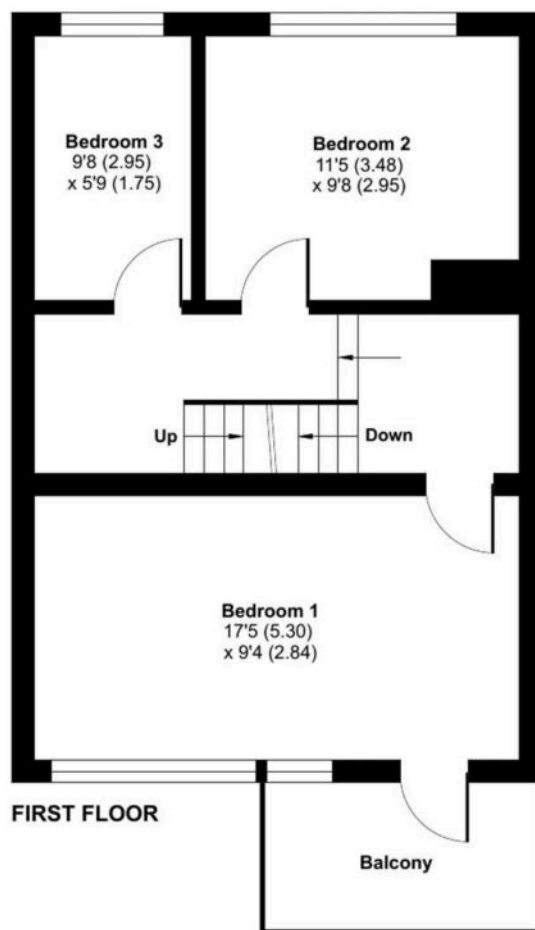
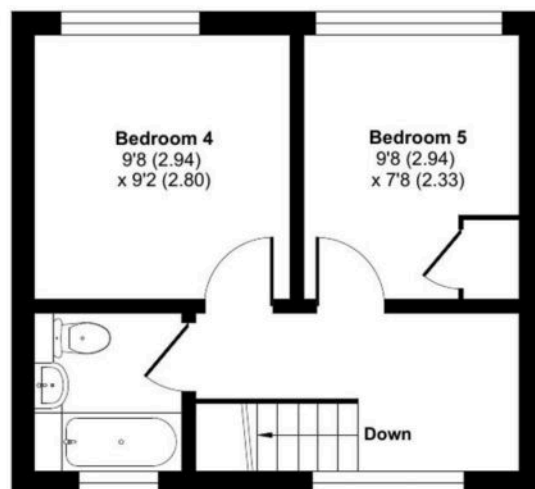
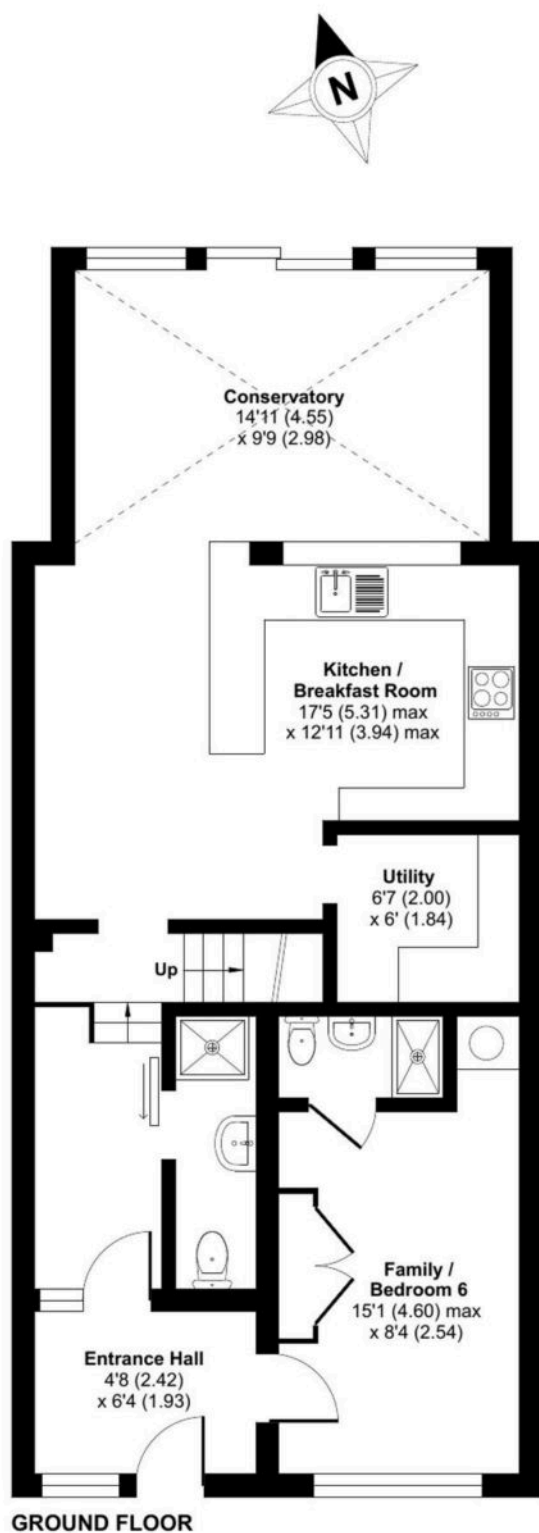




Anstey Close, Basingstoke, RG21

Approximate Area = 1454 sq ft / 135 sq m

For identification only - Not to scale



Floor plan produced in accordance with RICS Property Measurement 2nd Edition, Incorporating International Property Measurement Standards (IPMS2 Residential). © nitchecom 2025. Produced for Property Explorer. REF: 1306728

Money Laundering Regulations: - Intending purchasers will be asked to produce identification documentation at a later stage and we would ask for your co-operation in order that there will be no delay in agreeing the sale. NB. The information provided about this property does not constitute or form part of an offer or contract, nor may it be regarded as representations. All interested parties must verify accuracy and your solicitor must verify fixtures & fittings and, where the property has been extended/converted, planning/building regulation consents. All dimensions are approximate and quoted for guidance only as are floor plans which are not to scale and their accuracy cannot be confirmed. Reference to appliances and/or services does not imply that they are necessarily in working order or fit for the purpose.