

## Paddock Road, Basingstoke – RG22 6QQ

£325,000 Freehold

3 BEDROOMS • CLOSE TO SCHOOLS • SOUTH FACING GARDEN • NEW LOG BURNER • NEW PORCH • EXCELLENT CONDITION

01256 321777

[www.thepropertyexplorer.co.uk](http://www.thepropertyexplorer.co.uk)

the property  
**explorer**



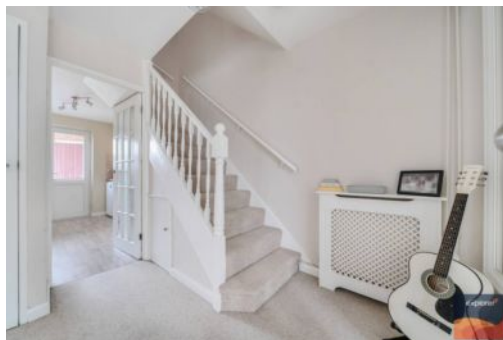
EXPLORER - This exceptional 3-bedroom home is packed with impressive upgrades and is beautifully presented throughout. This home is a rare find, combining charm, modern upgrades, and efficiency — ready for you to move in and enjoy straight away.

Council Tax band: C

Tenure: Freehold



- 3 BEDROOMS
- CLOSE TO SCHOOLS
- SOUTH FACING GARDEN
- NEW LOG BURNER
- NEW PORCH
- EXCELLENT CONDITION



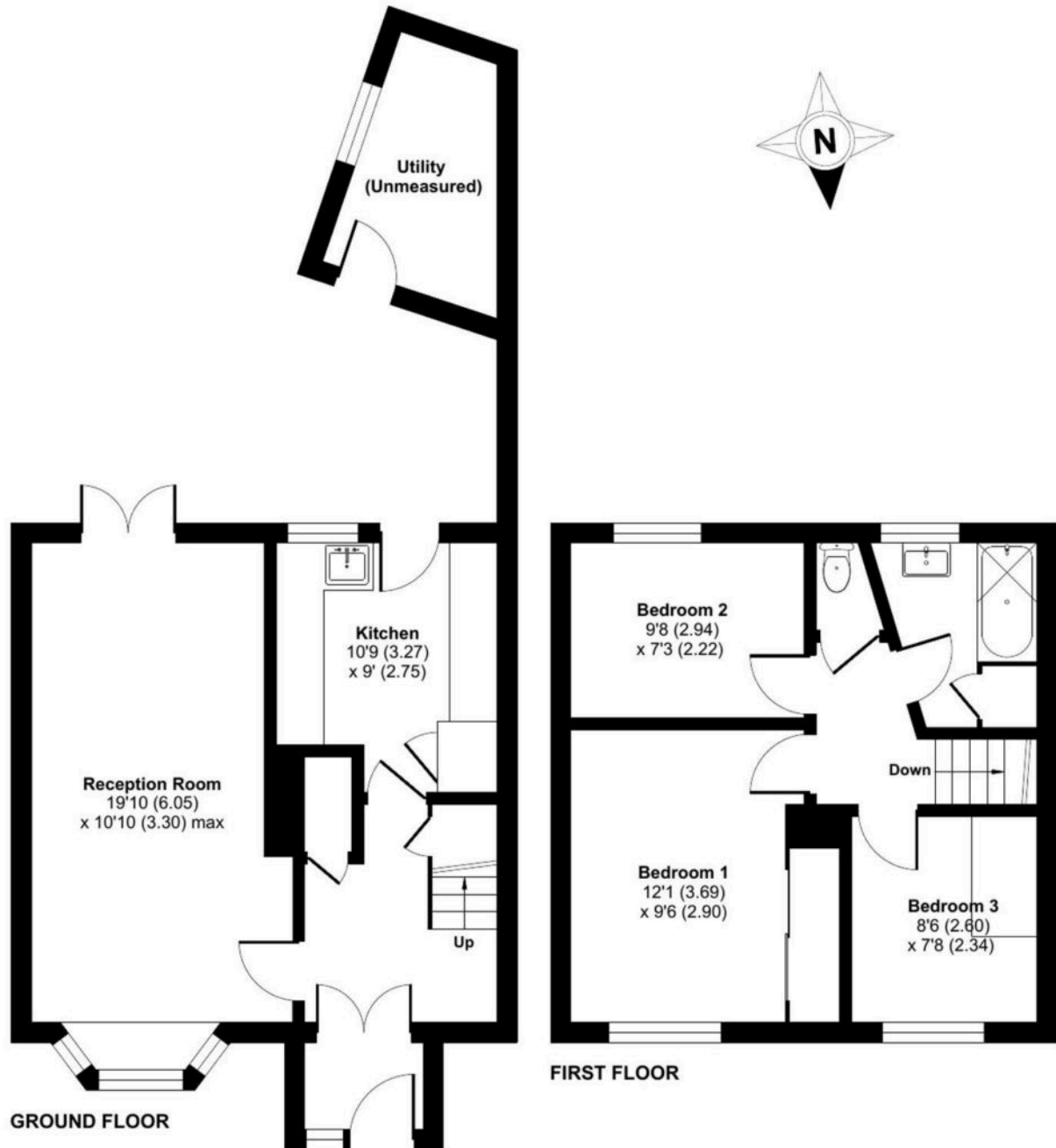




# Paddock Road, Basingstoke, RG22

Approximate Area = 798 sq ft / 74.1 sq m (excludes store)

For identification only - Not to scale



Floor plan produced in accordance with RICS Property Measurement 2nd Edition, Incorporating International Property Measurement Standards (IPMS2 Residential). © nichecom 2025. Produced for Property Explorer. REF: 1305522

The information provided about this property is intended as a general guide and does not form part of any offer or contract. Prospective buyers should independently verify all details, and legal advisors are recommended to confirm the status of fixtures, fittings, and any extensions or conversions, including relevant planning permissions and building regulation approvals. All measurements are approximate and for guidance only; floor plans are not to scale and cannot guarantee accuracy. References to appliances and services do not confirm their operational status or suitability.