



## 16 Hutchins Way, Basingstoke – RG24 9UN

£425,000 Freehold

3 BEDROOMS • BUILT CIRCA 2016 DAVID WILSON HOMES • ENSUITE • DOWNSTAIRS WC • GARAGE WITH PARKING • MUST VIEW

01256 321777

[www.thepropertyexplorer.co.uk](http://www.thepropertyexplorer.co.uk)

the property  
**explorer**



Immaculate 3-Bedroom Home in Family-Friendly Spiers Meadow. Positioned on a peaceful no-through road with open green views, this stunning modern home offers exceptional living for a growing family. Built by the renowned David Wilson Homes circa 2016, the property is presented in immaculate condition and delivers a host of desirable features throughout.

Council Tax band: D

Tenure: Freehold



- 3 BEDROOMS
- BUILT CIRCA 2016
- DAVID WILSON HOMES
- ENSUITE
- DOWNSTAIRS WC
- GARAGE WITH PARKING
- MUST VIEW







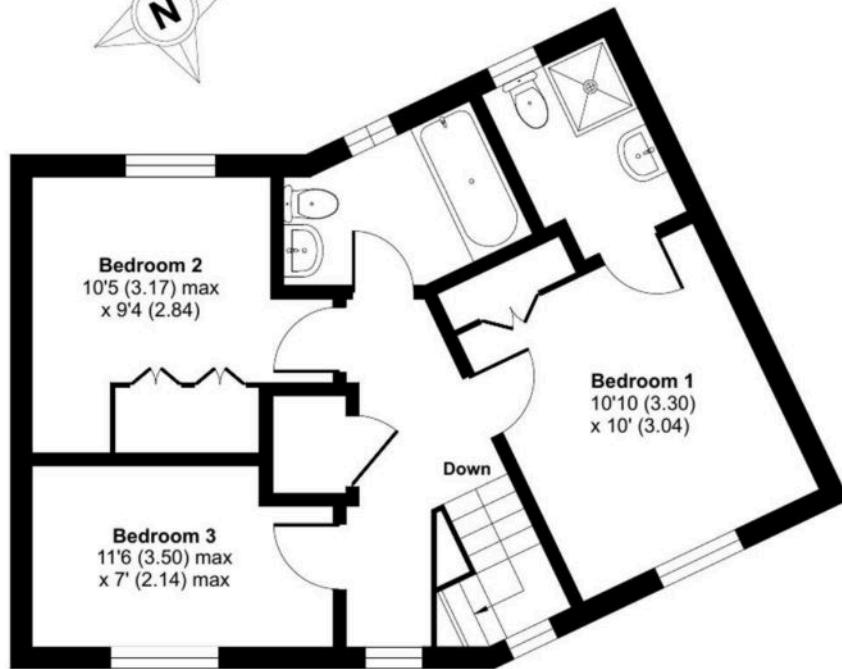
# Hutchins Way, Basingstoke, RG24

Approximate Area = 989 sq ft / 91.8 sq m

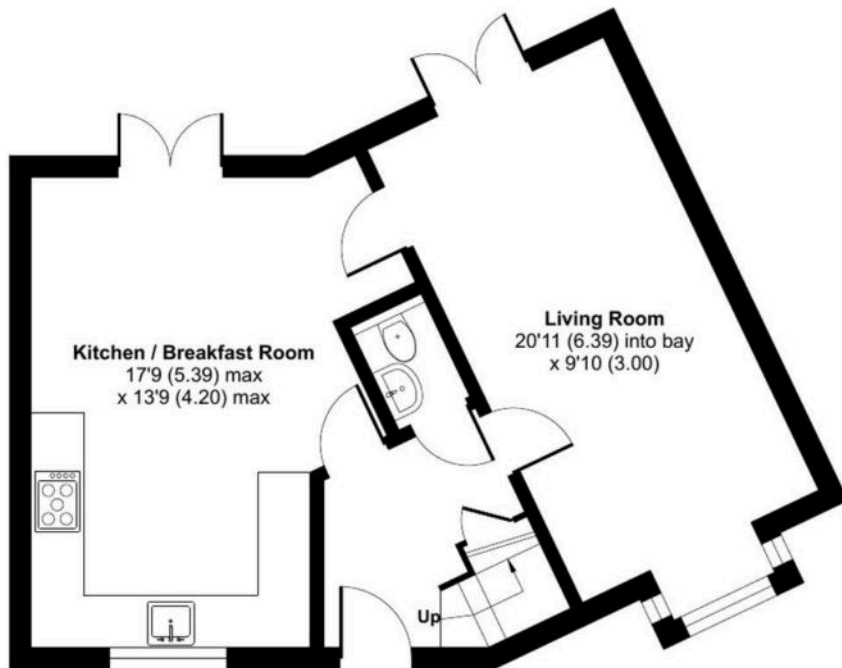
Garage = 193 sq ft / 17.9 sq m

Total = 1182 sq ft / 109.7 sq m

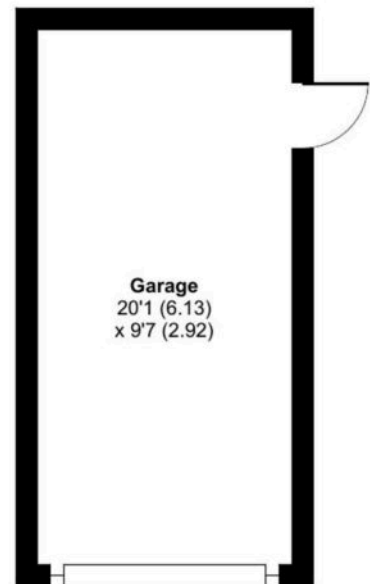
For identification only - Not to scale



FIRST FLOOR



GROUND FLOOR



GARAGE



Floor plan produced in accordance with RICS Property Measurement 2nd Edition, Incorporating International Property Measurement Standards (IPMS2 Residential). © nichecom 2025. Produced for Property Explorer. REF: 1303421

Money Laundering Regulations: - Intending purchasers will be asked to produce identification documentation at a later stage and we would ask for your co-operation in order that there will be no delay in agreeing the sale. NB. The information provided about this property does not constitute or form part of an offer or contract, nor may it be regarded as representations. All interested parties must verify accuracy and your solicitor must verify fixtures & fittings and, where the property has been extended/converted, planning/building regulation consents. All dimensions are approximate and quoted for guidance only as are floor plans which are not to scale and their accuracy cannot be confirmed. Reference to appliances and/or services does not imply that they are necessarily in working order or fit for the purpose.