



15 Bronze Close, Beggarwood – RG22 4UF

£385,000 Freehold

4 BEDROOMS • GARAGE WITH DRIVEWAY PARKING TO THE SIDE • ENSUITE TO MAIN BEDROOM •
CLOSE TO GREEN SPACE • VERSATILE ACCOMMODATION • GROUND FLOOR KITCHEN / BREAKFAST



01256 321777



www.thepropertyexplorer.co.uk

the property
explorer

EXPLORER – Tucked away in the sought-after Beggarwood development, this impressive four-bedroom end-of-terrace townhouse offers generous space, versatile living, and the added benefit of a garage and driveway parking for multiple vehicles.

Council Tax band: D

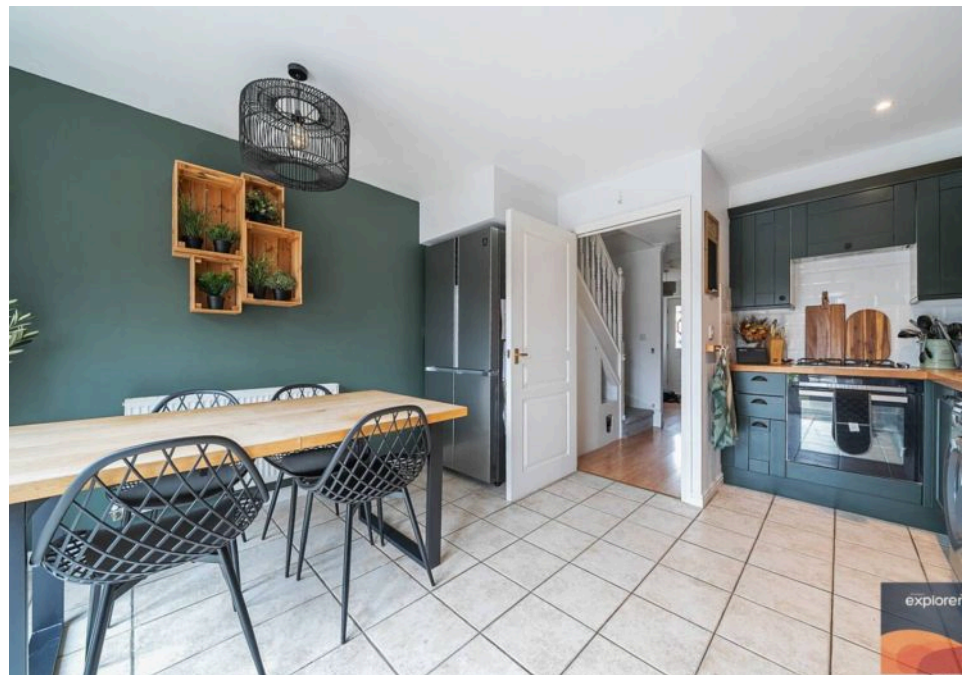
Tenure: Freehold

EPC Energy Efficiency Rating: C

EPC Environmental Impact Rating: C



- 4 BEDROOMS
- GARAGE WITH DRIVEWAY PARKING TO THE SIDE
- ENSUITE TO MAIN BEDROOM
- CLOSE TO GREEN SPACE
- VERSATILE ACCOMMODATION
- GROUND FLOOR KITCHEN / BREAKFAST





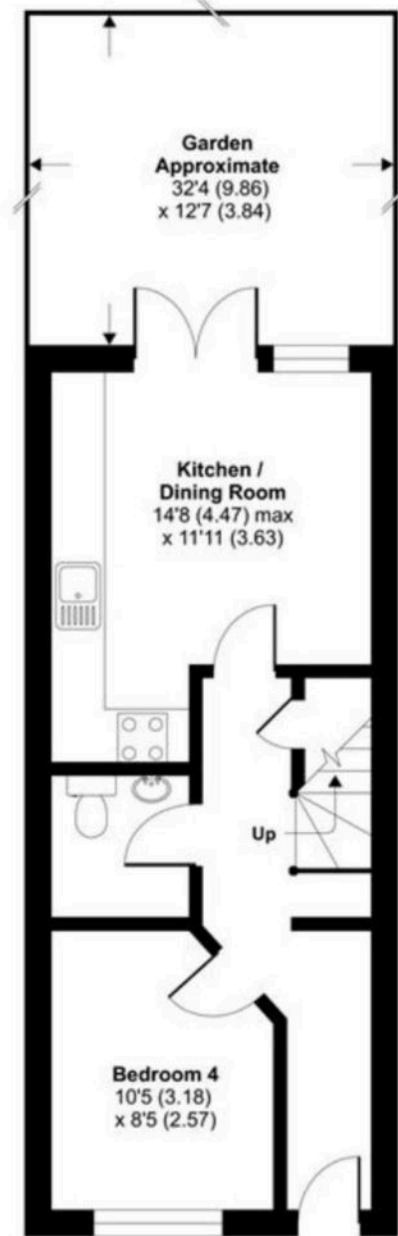
Bronze Close, Beggarwood, Basingstoke, RG22

Approximate Area = 1134 sq ft / 105.3 sq m

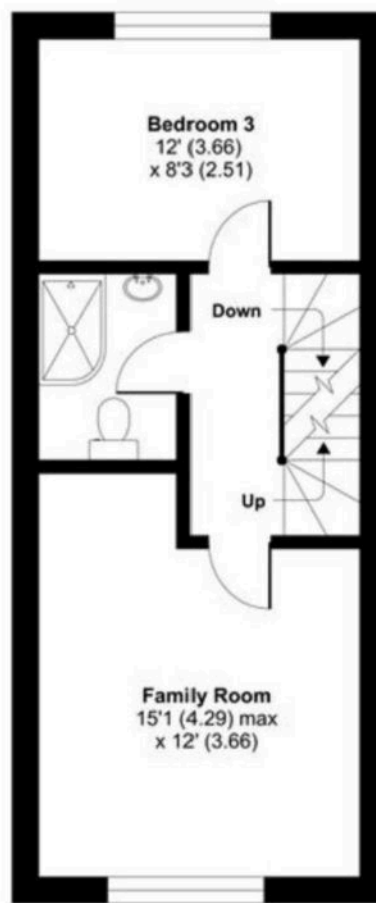
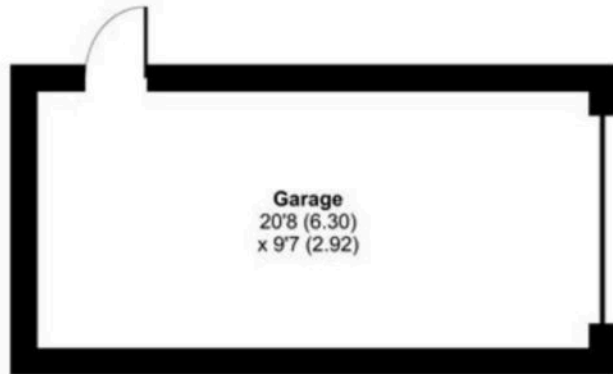
Garage = 199 sq ft / 18.4 sq m

Total = 1333 sq ft / 123.8 sq m

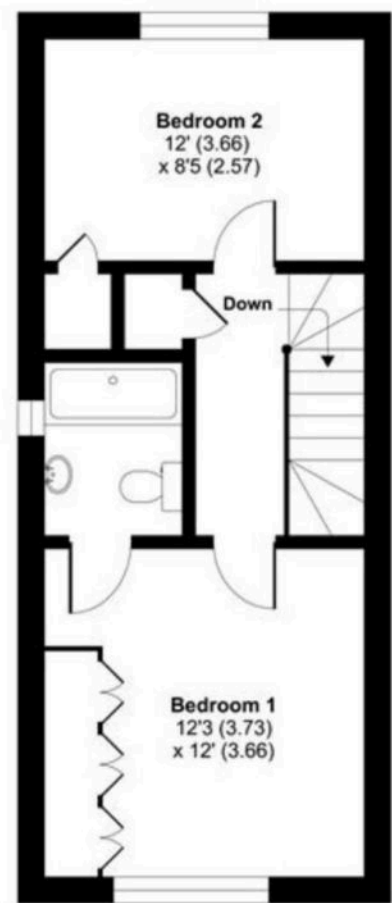
For identification only - Not to scale



GROUND FLOOR



FIRST FLOOR



SECOND FLOOR



Floor plan produced in accordance with RICS Property Measurement Standards incorporating International Property Measurement Standards (IPMS2 Residential). © nichecom 2021. Produced for Property Explorer. REF: 796364

Money Laundering Regulations: - Intending purchasers will be asked to produce identification documentation at a later stage and we would ask for your co-operation in order that there will be no delay in agreeing the sale. NB. The information provided about this property does not constitute or form part of an offer or contract, nor may it be regarded as representations. All interested parties must verify accuracy and your solicitor must verify fixtures & fittings and, where the property has been extended/converted, planning/building regulation consents. All dimensions are approximate and quoted for guidance only as are floor plans which are not to scale and their accuracy cannot be confirmed. Reference to appliances and/or services does not imply that they are necessarily in working order or fit for the purpose.