

6 Tern Close, Basingstoke – RG22 5UF

£675,000 Freehold

BRYANT BUILT • 4 BEDROOMS • VIDEO TOUR • EXCEPTIONAL CONDITION THROUGHOUT • CLOSE TO GREEN SPACE • ENSUITE



01256 321777



www.thepropertyexplorer.co.uk

the property
explorer

EXPLORER - A beautifully appointed four-bedroom detached Stratford design home by Bryant Homes, ideally positioned within the prestigious Gabriel Park development. Perfectly tucked away in a peaceful cul-de-sac and surrounded by open green space, this exceptional property offers thoughtfully designed living accommodation and immaculate interiors.

Tenure: Freehold



- BRYANT BUILT
- 4 BEDROOMS
- VIDEO TOUR
- EXCEPTIONAL CONDITION THROUGHOUT
- CLOSE TO GREEN SPACE
- ENSUITE





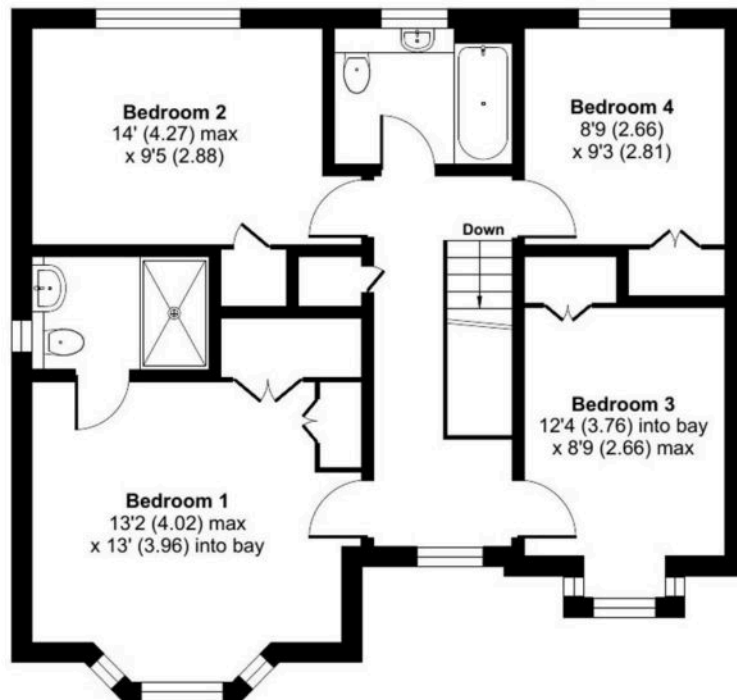
Tern Close, Basingstoke, RG22

Approximate Area = 1544 sq ft / 143.4 sq m

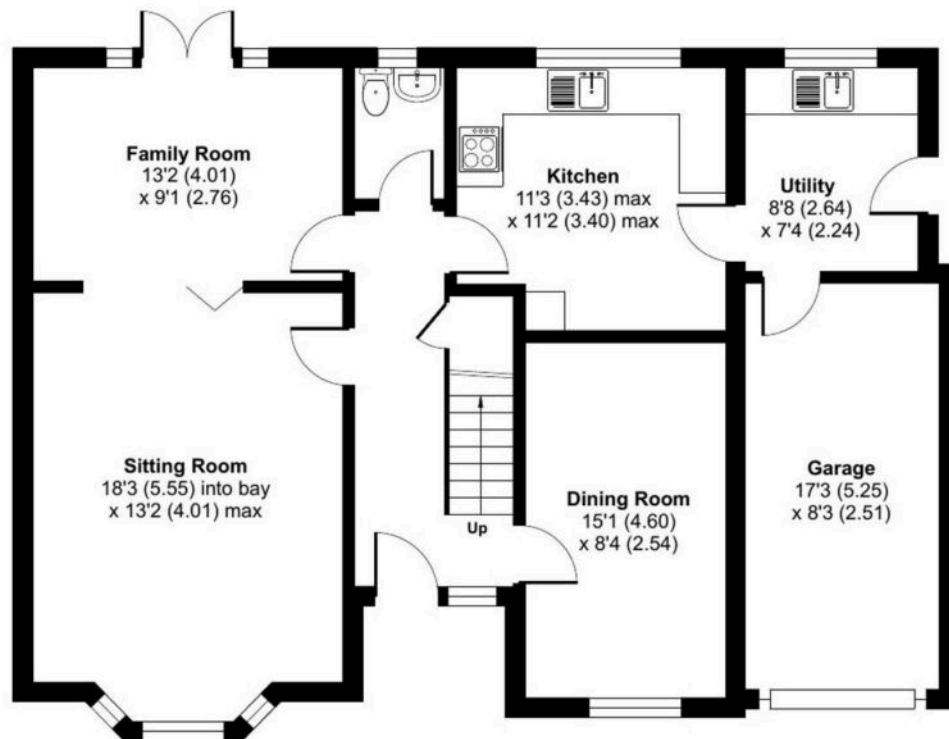
Garage = 142 sq ft / 13.1 sq m

Total = 1686 sq ft / 156.5 sq m

For identification only - Not to scale



FIRST FLOOR



GROUND FLOOR



Floor plan produced in accordance with RICS Property Measurement 2nd Edition, Incorporating International Property Measurement Standards (IPMS2 Residential). © nichecom 2025. Produced for Property Explorer. REF: 1271219

Money Laundering Regulations: - Intending purchasers will be asked to produce identification documentation at a later stage and we would ask for your co-operation in order that there will be no delay in agreeing the sale. NB. The information provided about this property does not constitute or form part of an offer or contract, nor may it be regarded as representations. All interested parties must verify accuracy and your solicitor must verify fixtures & fittings and, where the property has been extended/converted, planning/building regulation consents. All dimensions are approximate and quoted for guidance only as are floor plans which are not to scale and their accuracy cannot be confirmed. Reference to appliances and/or services does not imply that they are necessarily in working order or fit for the purpose.