



## 1 Marshcourt, Lychpit – RG24 8UY

£425,000 Freehold

DETACHED BUNGALOW • THREE BEDROOM • SPACIOUS LIVING ROOM • GALLEY KITCHEN • GARDEN • OFF STREET PARKING FOR SEVERAL CARS • CLOSE TO LOCAL SHOPS / SCHOOLS AND AMENITIES • CUL-DE SAC LOCATION

01256 321777

[www.thepropertyexplorer.co.uk](http://www.thepropertyexplorer.co.uk)

the property  
**explorer**



This beautifully refurbished property, located in the sought-after and tranquil setting of Marsh Court, has been finished to a high standard by the current owner and offers a home you can move straight into without the need for any work. Tucked away in a peaceful cul-de-sac, it combines stylish presentation with practical living, making it an ideal choice for a wide range of buyers.

Council Tax band: D

Tenure: Freehold

EPC Energy Efficiency Rating: C

EPC Environmental Impact Rating: D



- DETACHED BUNGALOW
- THREE BEDROOM
- SPACIOUS LIVING ROOM
- GALLEY KITCHEN
- GARDEN
- OFF STREET PARKING FOR SEVERAL CARS
- CLOSE TO LOCAL SHOPS / SCHOOLS AND AMENITIES
- CUL-DE SAC LOCATION



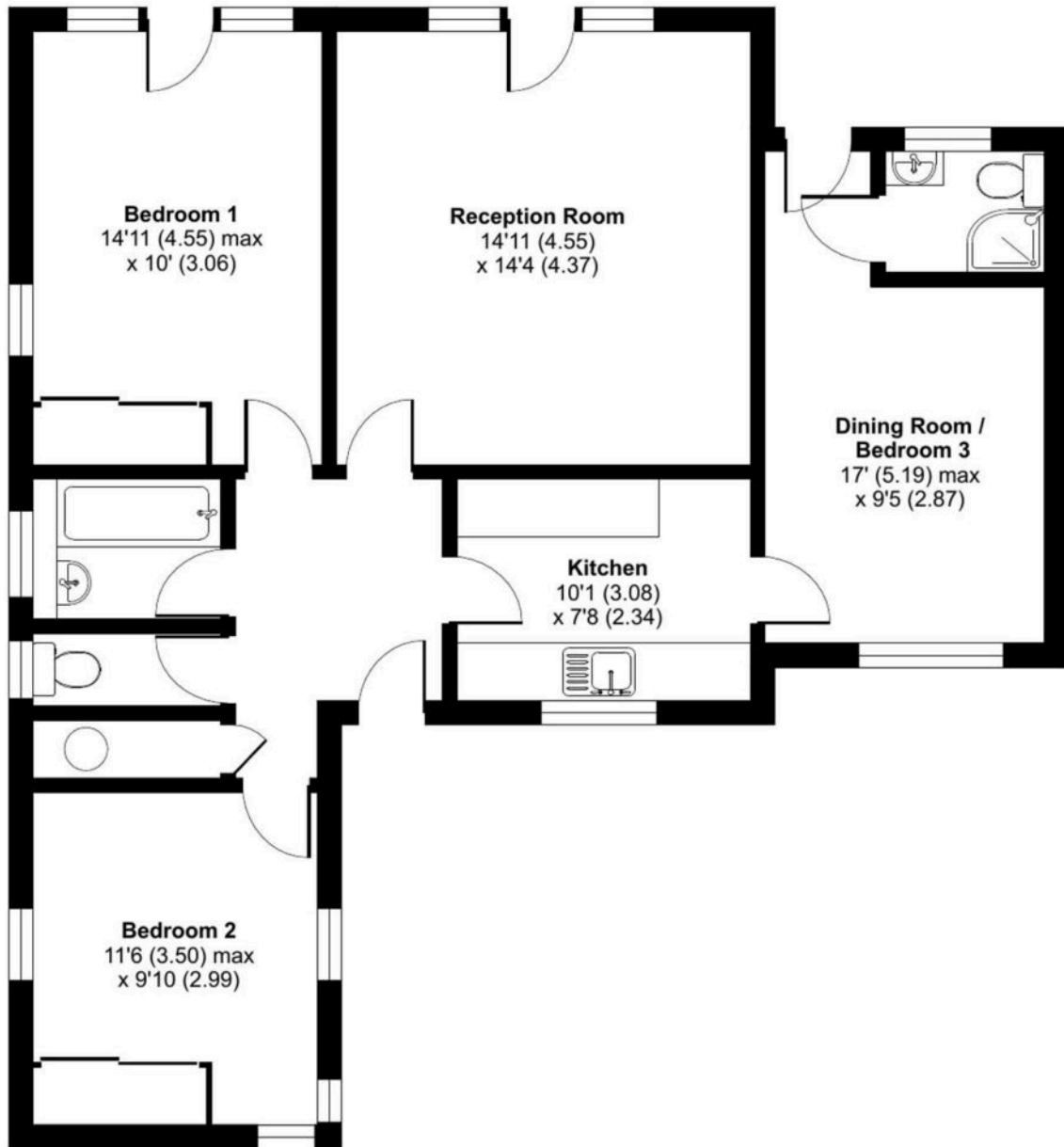




# Marshcourt, Lychpit, Basingstoke, RG24

Approximate Area = 892 sq ft / 82.9 sq m

For identification only - Not to scale



**GROUND FLOOR**



Floor plan produced in accordance with RICS Property Measurement 2nd Edition,  
Incorporating International Property Measurement Standards (IPMS2 Residential). © nichecom 2025.  
Produced for Property Explorer. REF1285436

You can include any text here. The text can be modified upon generating your brochure.