

## 26 Westray Close, Basingstoke - RG21 4HY

£300,000 Freehold

3 DOUBLE BEDROOMS • DOWNSTAIRS WC • TOWN CENTRE LOCATION • SPACIOUS LOUNGE / DINER 19 FEET • LARGE ENTRANCE HALLWAY • WELL APPOINTED KITCHEN • WALKING DISTANCE OF MAINLINE RAIL LINKS • EPC C • COMBI BOILER INSTALLED 2023

01256 321777

[www.thepropertyexplorer.co.uk](http://www.thepropertyexplorer.co.uk)

the property  
**explorer**



Explorer are delighted to offer to the market this spacious and well-presented three-bedroom end of terrace home, ideally located within walking distance of Basingstoke Town Centre and the mainline railway station. Early viewing is highly recommended to fully appreciate all that this fantastic home has to offer.

Council Tax band: C

Tenure: Freehold

EPC Energy Efficiency Rating: D

EPC Environmental Impact Rating: D



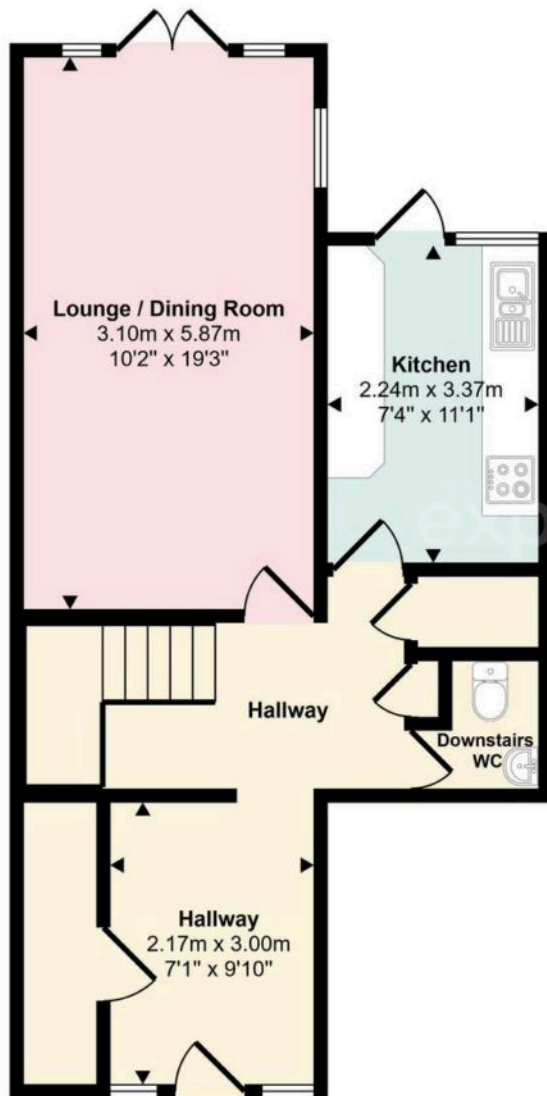
- 3 DOUBLE BEDROOMS
- DOWNSTAIRS WC
- TOWN CENTRE LOCATION
- SPACIOUS LOUNGE / DINER
- LARGE ENTRANCE HALLWAY
- WELL APPOINTED KITCHEN
- GARAGE IN BLOCK
- WALKING DISTANCE OF MAINLINE RAIL LINKS



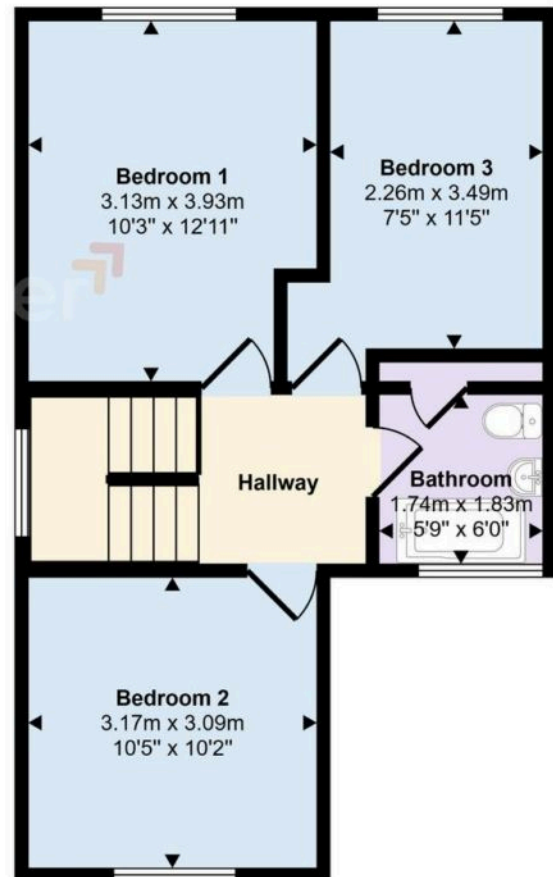




Approx Gross Internal Area  
90 sq m / 973 sq ft



Ground Floor  
Approx 48 sq m / 513 sq ft



First Floor  
Approx 43 sq m / 459 sq ft

This floorplan is only for illustrative purposes and is not to scale. Measurements of rooms, doors, windows, and any items are approximate and no responsibility is taken for any error, omission or mis-statement. Icons of items such as bathroom suites are representations only and may not look like the real items. Made with Made Snappy 360.

NB. The information provided about this property does not constitute or form part of an offer or contract, nor may it be regarded as representations. All interested parties must verify accuracy and your solicitor must verify fixtures & fittings and, where the property has been extended/converted, planning/building regulation consents. All dimensions are approximate and quoted for guidance only as are floor plans which are not to scale and their accuracy cannot be confirmed. Reference to appliances and/or services does not imply that they are necessarily in working order or fit for the purpose.