



9 Marshcourt, Lychpit - RG24 8UY

£575,000 Freehold

DETACHED • FOUR BEDROOM • TWO BATHROOMS • TWO RECEPTIONS • OPEN PLAN KITCHEN/DINER • EN SUITE • GARAGE • UTILITY ROOM • OFF STREET PARKING • GARDEN

01256 321777

www.thepropertyexplorer.co.uk

the property
explorer

EXPLORER - Nestled in a beautifully peaceful cul-de-sac, this impressive four-bedroom detached residence presents a fantastic opportunity for families seeking both space and serenity.

Council Tax band: E

Tenure: Freehold

EPC Energy Efficiency Rating: C

EPC Environmental Impact Rating: D



- › DETACHED
- › FOUR BEDROOM
- › TWO BATHROOMS
- › TWO RECEPTIONS
- › OPEN PLAN KITCHEN/DINER
- › EN SUITE
- › GARAGE
- › UTILITY ROOM
- › OFF STREET PARKING
- › GARDEN





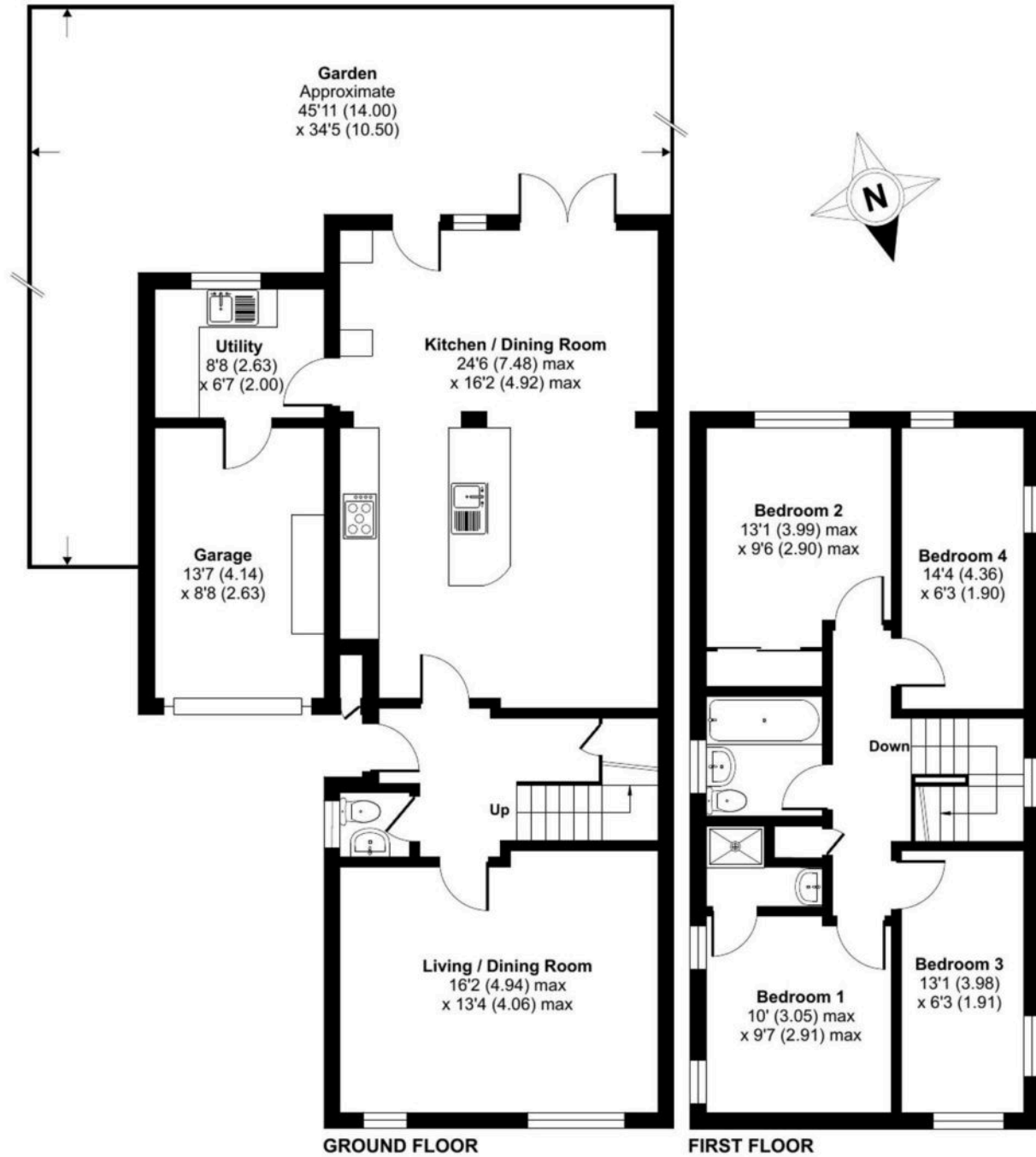
Marshcourt, Lychpit, Basingstoke, RG24

Approximate Area = 1332 sq ft / 123.7 sq m (excludes store)

Garage = 119 sq ft / 11 sq m

Total = 1451 sq ft / 134.7 sq m

For identification only - Not to scale



Floor plan produced in accordance with RICS Property Measurement 2nd Edition, Incorporating International Property Measurement Standards (IPMS2 Residential). © nitchecom 2025. Produced for Property Explorer. REF: 1280736

You can include any text here. The text can be modified upon generating your brochure.