



4 Stanswood Grange, Sherfield-On-Loddon – RG27 0BF

£700,000 Freehold

5 BEDROOMS • CROUDACE BUILT • DOUBLE GARAGE • OFF ROAD
PARKING FOR SEVERAL CARS

01256 321777

www.thepropertyexplorer.co.uk

the property
explorer

Explorer - Nestled in a peaceful cul-de-sac, this elegant Croudace built five-bedroom home combines space, style, and seclusion in one of the most sought-after locations within the Sherfied Park development. Surrounded by mature trees, the property enjoys a stunning outlook and exceptional privacy.

Council Tax band: F

Tenure: Freehold

EPC Energy Efficiency Rating: C

EPC Environmental Impact Rating: C



- 5 BEDROOMS
- CROUDACE BUILT
- DOUBLE GARAGE
- OFF ROAD PARKING FOR SEVERAL CARS





Stanswood Grange, Sherfield-on-Loddon, Hook, RG27

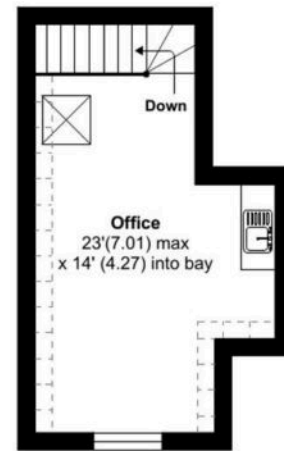
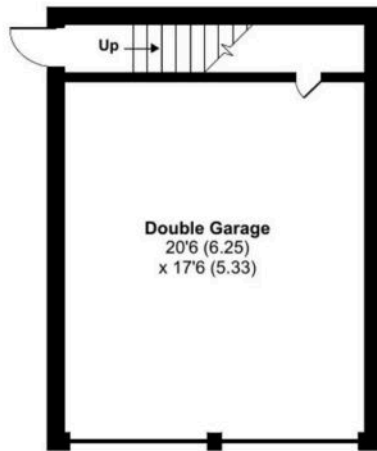
Approximate Area = 1917 sq ft / 178.1 sq m

Limited Use Area(s) = 30 sq ft / 2.7sq m

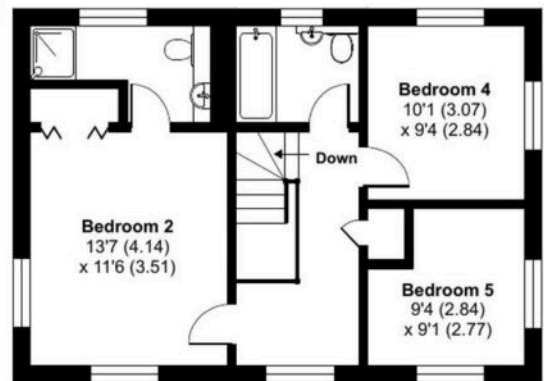
Garage = 657 sq ft / 61 sq m

Total = 2604 sq ft / 241.9 sq m

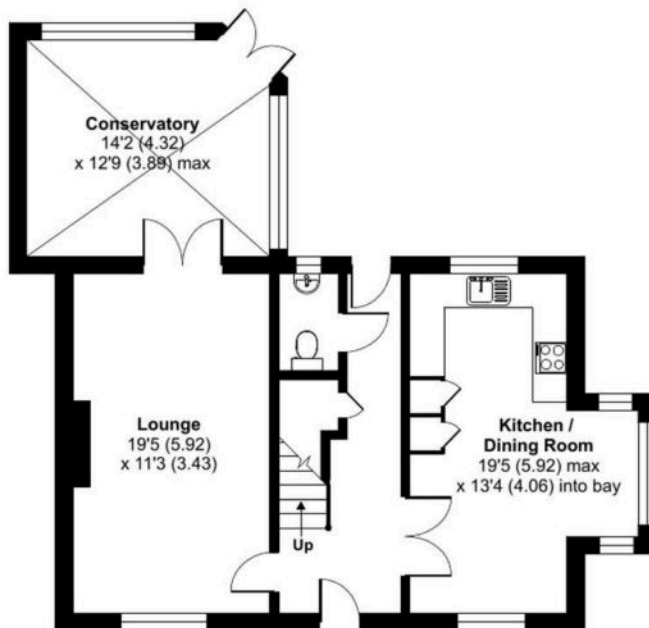
For identification only - Not to scale



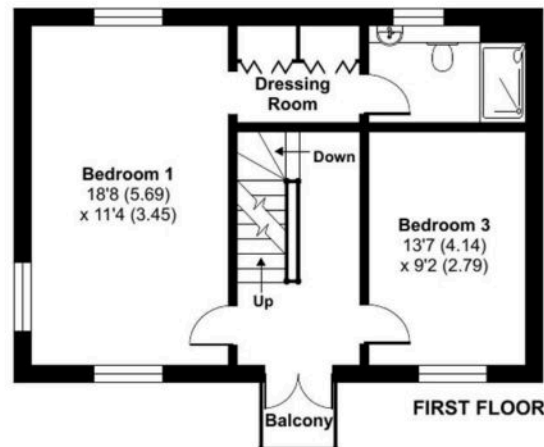
ROOM ABOVE GARAGE



SECOND FLOOR



GROUND FLOOR



FIRST FLOOR



Floor plan produced in accordance with RICS Property Measurement 2nd Edition, Incorporating International Property Measurement Standards (IPMS2 Residential). © nichecom 2025. Produced for Property Explorer. REF: 1271489

Explorer - Nestled in a peaceful cul-de-sac, this elegant Croudace built five-bedroom home combines space, style, and seclusion in one of the most sought-after locations within the Sherfield Park development. Surrounded by mature trees, the property enjoys a stunning outlook and exceptional privacy.