



Brickfields Close, Lychpit – RG24 8UX

£450,000 Freehold

3 BEDROOMS • DETACHED BUNGALOW • GARAGE WITH DRIVEWAY
• CHAIN FREE



01256 321777



www.thepropertyexplorer.co.uk

the property
explorer

THE PROPERTY EXPLORER is delighted to present this exceptional detached bungalow, offering an impressive balance of space, comfort, and convenience. Boasting three well proportioned bedrooms, this home provides the perfect blend of style and functionality, with a well-designed layout that maximises natural light and creates a welcoming atmosphere. Available chain-free, this property represents a rare opportunity to secure a sought-after home in a prime location. Viewing is highly recommended to fully appreciate all it has to offer.

Council Tax band: D

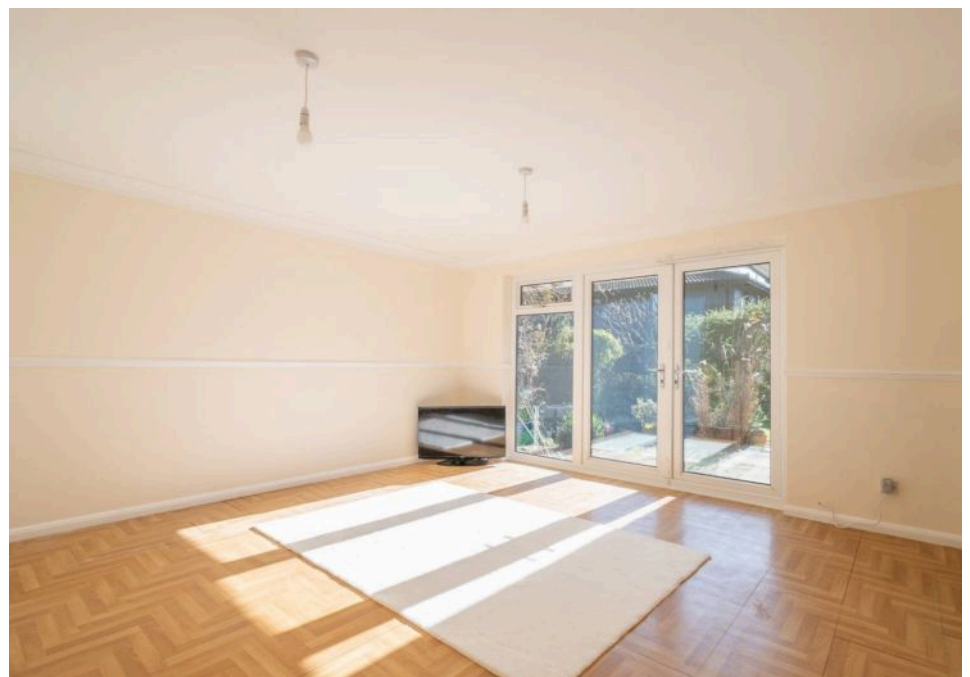
Tenure: Freehold

EPC Energy Efficiency Rating: D

EPC Environmental Impact Rating: D



- 3 BEDROOMS
- DETACHED BUNGALOW
- GARAGE WITH DRIVEWAY
- CHAIN FREE





Brickfields Close, Lychpit, Basingstoke, RG24

Approximate Area = 1023 sq ft / 95 sq m (includes garage)

Outbuilding = 41 sq ft / 4 sq m

Total = 1064 sq ft / 99 sq m

For identification only - Not to scale



BRICKFIELDS CLOSE is ideally located within close proximity to a range of amenities that include local supermarket, healthcare provisions, and excellent schools. Lychpit enjoys a great setting, living here you can enjoy great surroundings and become part of a vibrant local community. By road, the nearby M3 provides an excellent link to London and the South Coast. Basingstoke train station provides regular fast train services to many destinations,