

Heritage Park, Hatch Warren, RG22 4XT

Offers in Excess of £590,000 Freehold

WALKING DISTANCE OF GREEN SPACE • 5 BEDROOMS • EXTENDED / CONVERTED LOFT • ELECTRIC VEHICLE CHARGER •
EXECUTIVE DETACHED FAMILY HOME • VIEWINGS RECOMMENDED • VIDEO TOUR • CLOSE TO SCHOOLS

01256 321777

www.thepropertyexplorer.co.uk

the property
explorer

EXPLORER - Immaculately Upgraded 5-Bedroom Executive Detached Home in Heritage Park. This stunning five-bedroom executive detached home, nestled in the highly sought-after Heritage Park development in Hatch Warren, has been extensively upgraded to an exceptional standard. With a suited onward chain, this property is perfect for those looking for a beautifully modernised and spacious family home.

Council Tax band: F

Tenure: Freehold

EPC Energy Efficiency Rating: C

EPC Environmental Impact Rating:



- › WALKING DISTANCE OF GREEN SPACE
- › 5 BEDROOMS
- › EXTENDED / CONVERTED LOFT
- › ELECTRIC VEHICLE CHARGER
- › EXECUTIVE DETACHED FAMILY HOME
- › VIEWINGS RECOMMENDED
- › VIDEO TOUR
- › CLOSE TO SCHOOLS





Denotes restricted
head height

Heritage Park, Basingstoke, RG22

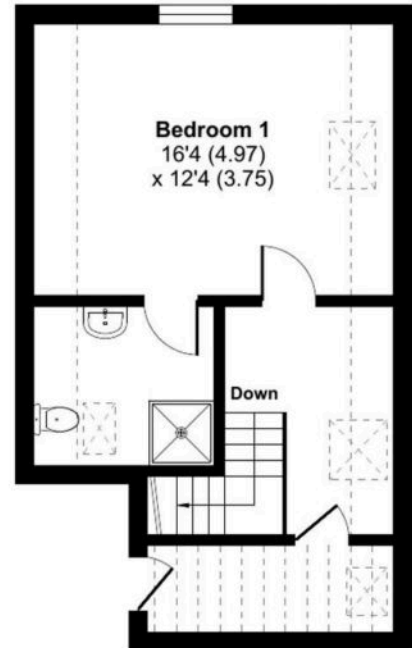
Approximate Area = 1628 sq ft / 151.2 sq m

Limited Use Area(s) = 135 sq ft / 12.5 sq m

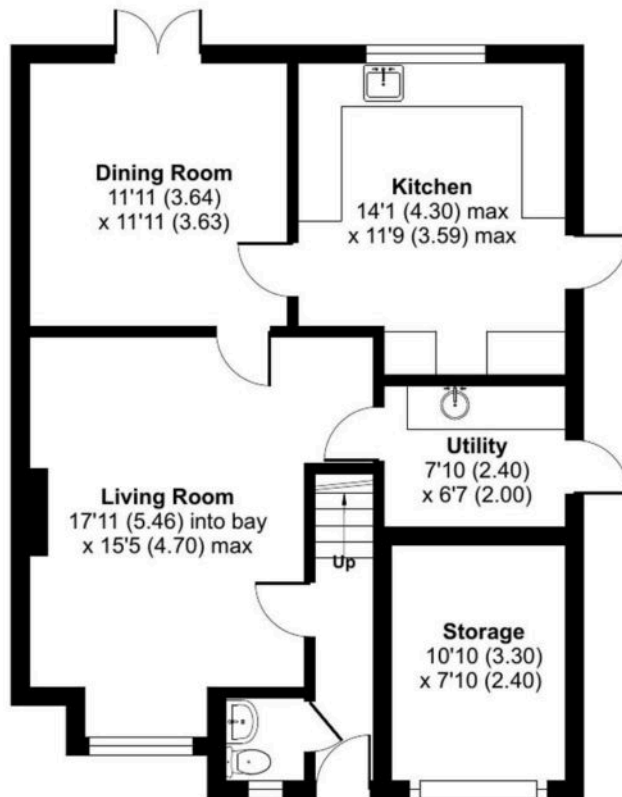
Outbuilding = 84 sq ft / 7.8 sq m

Total = 1847 sq ft / 171.5 sq m

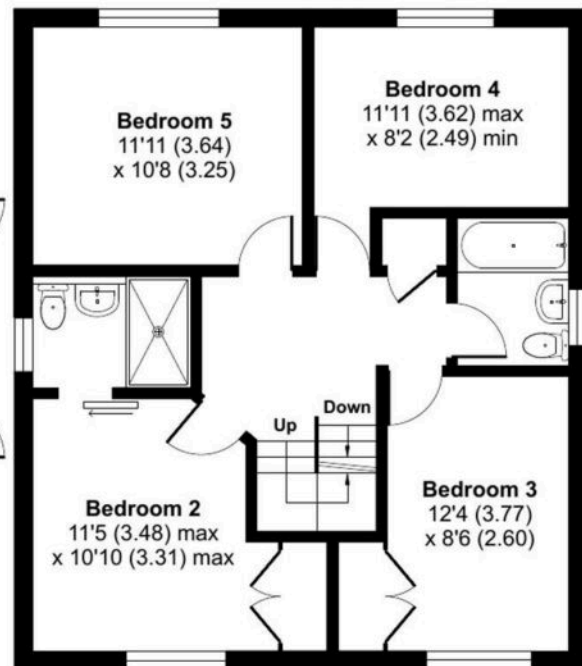
For identification only - Not to scale



SECOND FLOOR



GROUND FLOOR



FIRST FLOOR



Floor plan produced in accordance with RICS Property Measurement 2nd Edition, Incorporating International Property Measurement Standards (IPMS2 Residential). © nichecom 2025. Produced for Property Explorer. REF: 1265487

Disclaimer These particulars, whilst believed to be accurate are set out as a general outline only for guidance and do not constitute any part of an offer or contract. Intending purchasers should not rely on them as statements of representation of fact, but must satisfy themselves by inspection or otherwise as to their accuracy. No person in this firms employment has the authority to make or give any representation or warranty in respect of the property