



21 Arcadia Close, Beggarwood – RG22 4AJ

£425,000 Freehold

4 BEDROOMS • ENSUITE TO PRINCIPAL BEDROOM • ENSUITE TO GUEST BEDROOM • GARAGE • CLOSE TO GREEN SPACE • CONSERVATORY

01256 321777

www.thepropertyexplorer.co.uk

the property
explorer

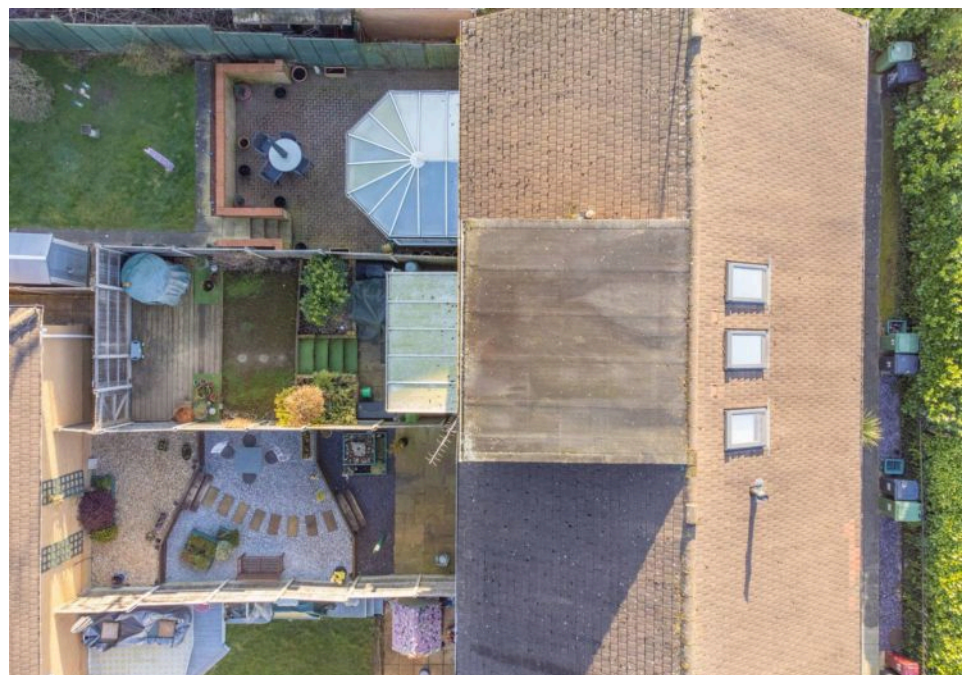
EXPLORER – Positioned in the heart of the highly sought-after, family-friendly Beggarwood community, this exceptional home offers an abundance of space, style, and modern comfort across three well-appointed floors. Thoughtfully enhanced with a professionally converted loft, the property now boasts a stunning principal suite, complete with a luxurious, fully tiled en-suite, creating a private sanctuary at the top of the home.

Council Tax band: D

Tenure: Freehold



- 4 BEDROOMS
- ENSUITE TO PRINCIPAL BEDROOM
- ENSUITE TO GUEST BEDROOM
- GARAGE
- CLOSE TO GREEN SPACE
- CONSERVATORY





THE PROPERTY
EXPLORE



THE PROPERTY
EXPLORE



THE PROPERTY
EXPLORE



THE PROPERTY
EXPLORE



THE PROPERTY
EXPLORE

Arcadia Close, Beggarwood, Basingstoke, RG22

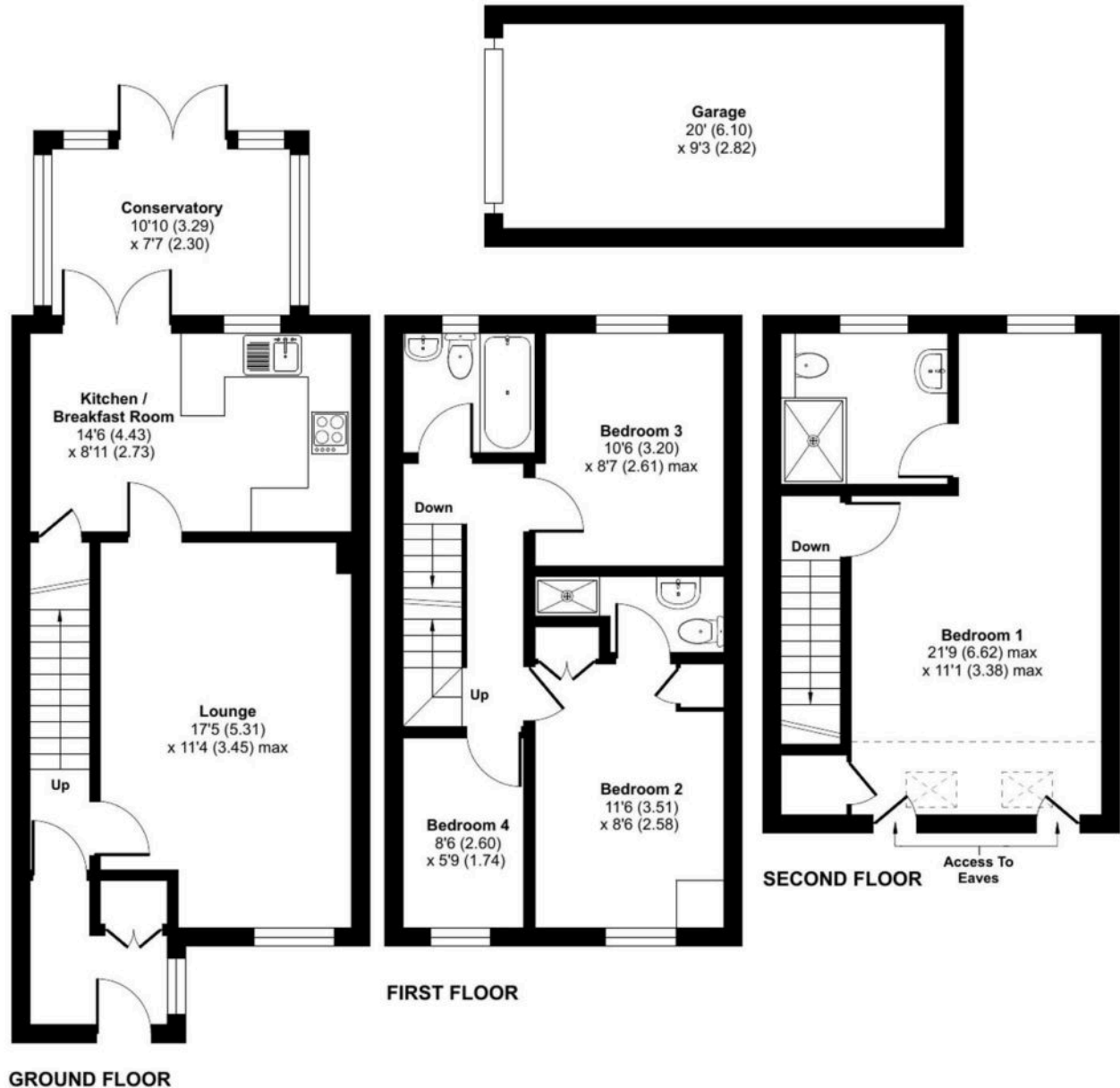
Approximate Area = 1178 sq ft / 109.4 sq m

Limited Use Area(s) = 37 sq ft / 3.4 sq m

Garage = 185 sq ft / 17.1 sq m

Total = 1400 sq ft / 129.9 sq m

For identification only - Not to scale



Floor plan produced in accordance with RICS Property Measurement 2nd Edition, Incorporating International Property Measurement Standards (IPMS2 Residential). © nichecom 2025. Produced for Property Explorer. REF: 1258404

You can include any text here. The text can be modified upon generating your brochure.