



## Rycroft Meadow, Beggarwood – RG22 4QF

£385,000 Freehold

3 BEDROOMS • ENSUITE TO MAIN BEDROOM • DOWNSTAIRS WC • GARAGE TO THE SIDE • CLOSE TO GREEN SPACE • SOUTHERLY FACING REAR GARDEN • NEW BOILER 2023 • EXCELLENT SCHOOL CATCHMENT • EPC – C

01256 321777

[www.thepropertyexplorer.co.uk](http://www.thepropertyexplorer.co.uk)

the property  
**explorer**



Explorer is delighted to offer this well-appointed three-bedroom semi-detached family home, featuring an ensuite to the principal bedroom, a downstairs WC, a garage with a driveway to the side, and southerly facing garden.

Council Tax band: D

Tenure: Freehold

EPC Energy Efficiency Rating: C

EPC Environmental Impact Rating:



- › 3 BEDROOMS
- › ENSUITE TO MAIN BEDROOM
- › DOWNSTAIRS WC
- › GARAGE TO THE SIDE
- › CLOSE TO GREEN SPACE
- › SOUTHERLY FACING REAR GARDEN
- › NEW BOILER 2023
- › EXCELLENT SCHOOL CATCHMENT
- › EPC - C









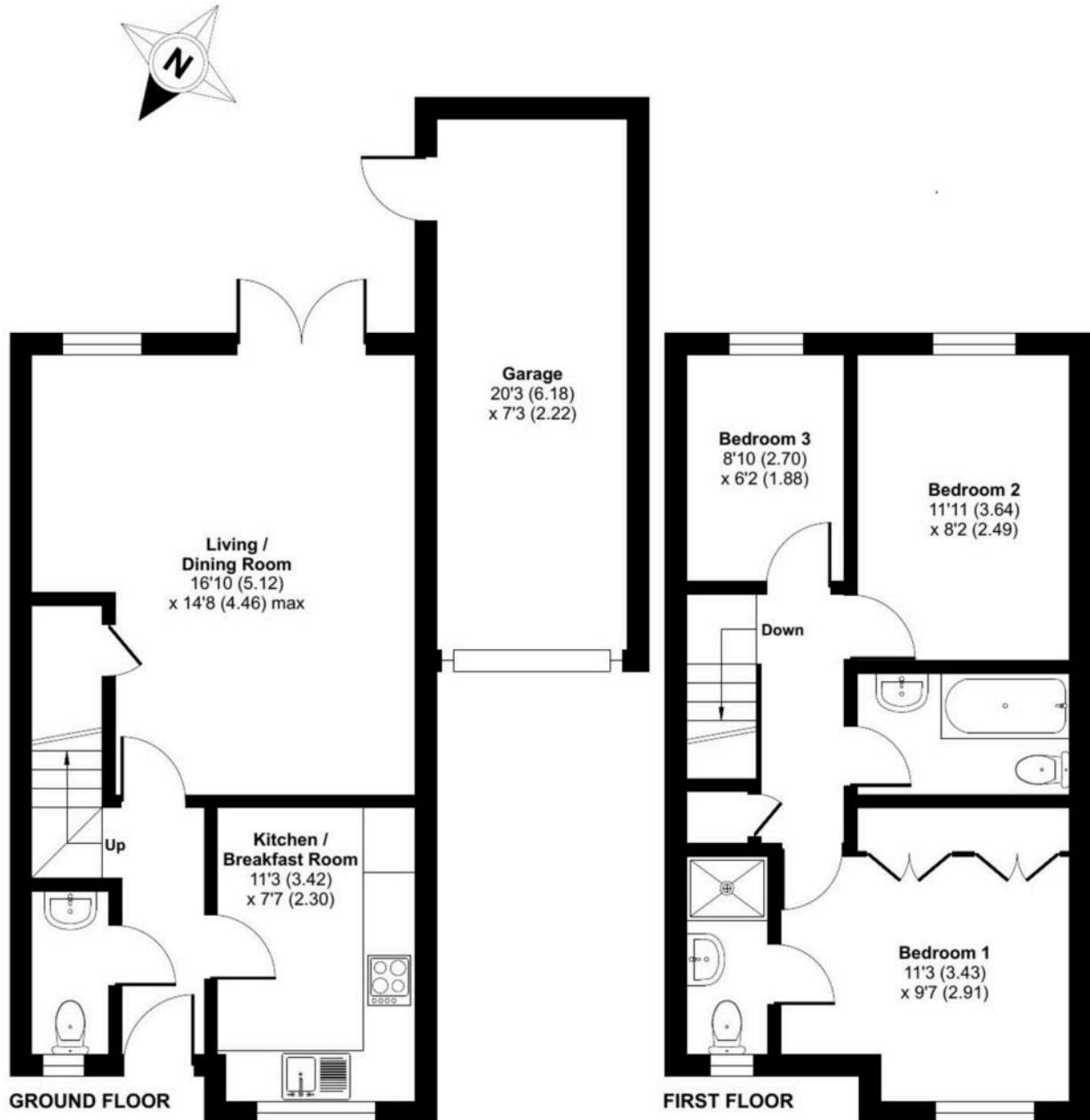
# Rycroft Meadow, Beggarwood, Basingstoke, RG22

Approximate Area = 808 sq ft / 75 sq m

Garage = 148 sq ft / 13.7 sq m

Total = 956 sq ft / 88.7 sq m

For identification only - Not to scale



Floor plan produced in accordance with RICS Property Measurement 2nd Edition, Incorporating International Property Measurement Standards (IPMS2 Residential). © nichecom 2025. Produced for Property Explorer. REF: 1256435

## Disclaimer

These particulars, whilst believed to be accurate are set out as a general outline only for guidance and do not constitute any part of an offer or contract. Intending purchasers should not rely on them as statements of representation of fact, but must satisfy themselves by inspection or otherwise as to their accuracy. No person in this firm's employment has the authority to make or give any representation or warranty in respect of the property.