



Firecrest Road, Basingstoke – RG22 5UN

£685,000 Freehold

4 BEDROOMS • DOUBLE GARAGE • DOUBLE DRIVEWAY • 3 RECEPTION ROOMS • ENSUITE TO PRINCIPAL BEDROOM •
ENSUITE TO GUEST BEDROOM • CLOSE TO GREEN SPACE • PREMIER DEVELOPMENT

01256 321777

www.thepropertyexplorer.co.uk

the property
explorer

EXPLORER – An exceptional detached family home, built by the renowned Bryant Homes, beautifully positioned within the sought-after Gabriel Park development in Kempshott. This immaculate property offers a perfect blend of space, style, and practicality, making it an ideal choice for modern family living.

Council Tax band: F

Tenure: Freehold

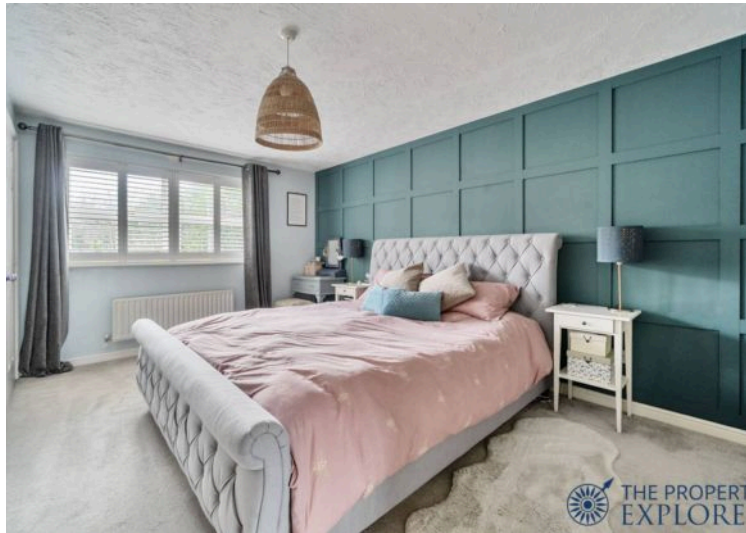
EPC Energy Efficiency Rating:

EPC Environmental Impact Rating:



- 4 BEDROOMS
- DOUBLE GARAGE
- DOUBLE DRIVEWAY
- 3 RECEPTION ROOMS
- ENSUITE TO PRINCIPAL BEDROOM
- ENSUITE TO GUEST BEDROOM
- CLOSE TO GREEN SPACE
- PREMIER DEVELOPMENT





Firecrest Road, Basingstoke, RG22

Approximate Area = 1776 sq ft / 165 sq m

Limited Use Area(s) = 53 sq ft / 4.9 sq m

Garage = 294 sq ft / 27.3 sq m

Total = 2123 sq ft / 197.2 sq m

For identification only - Not to scale



Denotes restricted
head height



Floor plan produced in accordance with RICS Property Measurement 2nd Edition, Incorporating International Property Measurement Standards (IPMS2 Residential). © nichecom 2025. Produced for Property Explorer. REF:1251879

Disclaimer

These particulars, whilst believed to be accurate are set out as a general outline only for guidance and do not constitute any part of an offer or contract. Intending purchasers should not rely on them as statements of representation of fact, but must satisfy themselves by inspection or otherwise as to their accuracy. No person in this firms employment has the authority to make or give any representation or warranty in respect of the property