



Dorset Crescent, Basingstoke – RG22 5DU

Offers Over £335,000 Freehold

2 DOUBLE BEDROOMS • KARNDAN FLOORING • SOUTH FACING GARDEN • ALLOCATED PARKING • REPLACED BOILER
• FIRST TIME BUYERS

01256 321777

www.thepropertyexplorer.co.uk

the property
explorer

Spacious & Modern 2-Bedroom Home with a 3-Bedroom Footprint
Situated in a quiet and sought-after neighbourhood.

Council Tax band: C

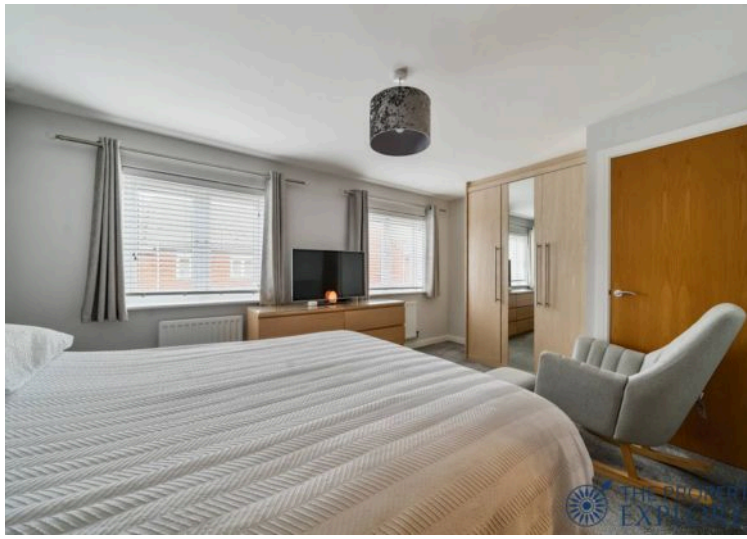
Tenure: Freehold

EPC Energy Efficiency Rating: C



- › 2 DOUBLE BEDROOMS
- › KARNDEN FLOORING
- › SOUTH FACING GARDEN
- › ALLOCATED PARKING
- › REPLACED BOILER
- › FIRST TIME BUYERS

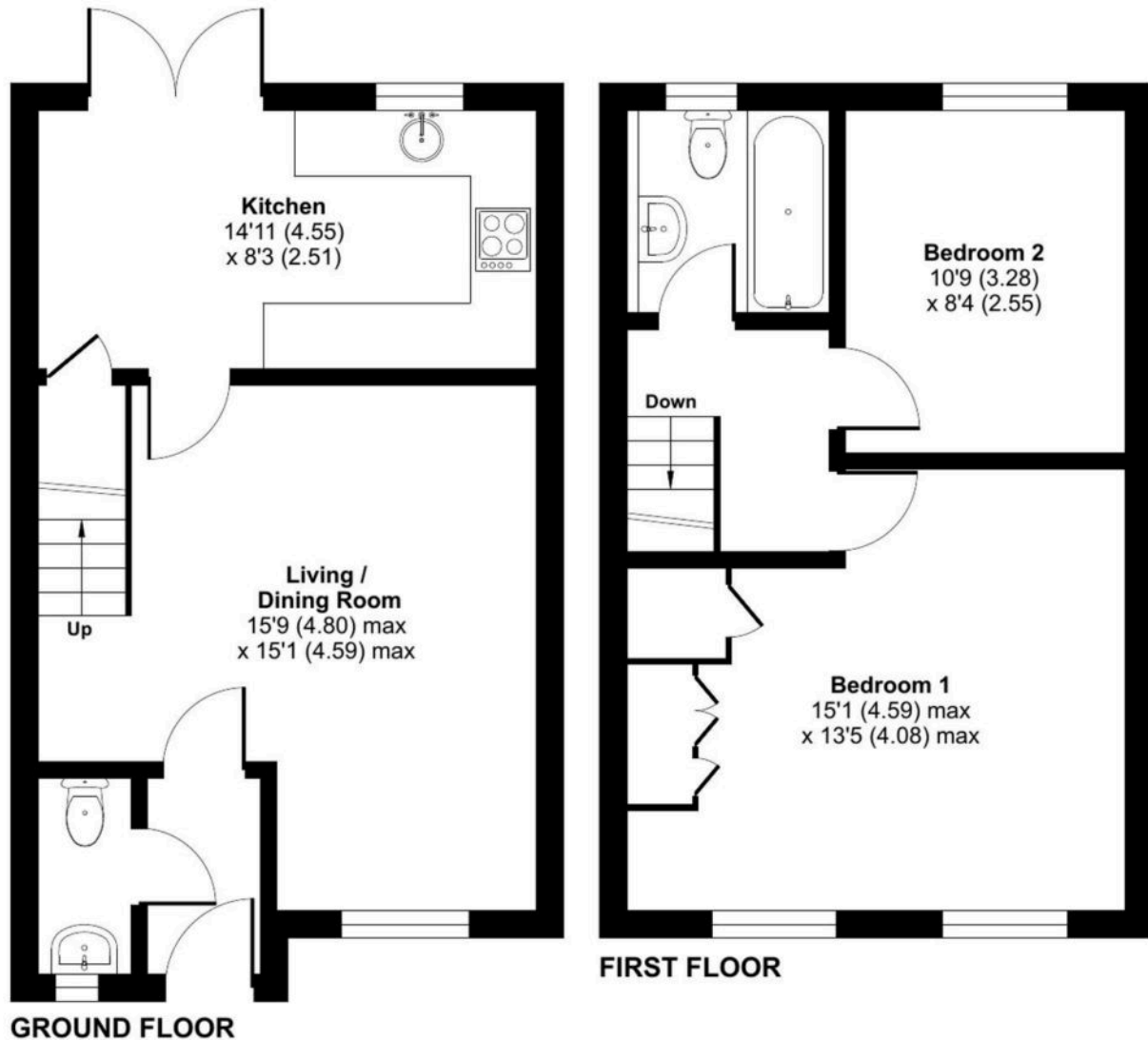




Dorset Crescent, Basingstoke, RG22

Approximate Area = 729 sq ft / 67.7 sq m

For identification only - Not to scale



Floor plan produced in accordance with RICS Property Measurement 2nd Edition, Incorporating International Property Measurement Standards (IPMS2 Residential). © nichecom 2025. Produced for Property Explorer. REF: 1247235

Disclaimer

These particulars, whilst believed to be accurate are set out as a general outline only for guidance and do not constitute any part of an offer or contract. Intending purchasers should not rely on them as statements of representation of fact, but must satisfy themselves by inspection or otherwise as to their accuracy. No person in this firm's employment has the authority to make or give any representation or warranty in respect of the property.