



## Cliddesden Road, Basingstoke – RG21 3DU

£215,000 Leasehold

ONE AND A HALF BEDROOMS • ALLOCATED PRIVATE PARKING • TOWN CENTRE LOCATION • GROUND FLOOR • LONG LEASE • BUILT 2019 • EPC – B • GARDEN

01256 321777

[www.thepropertyexplorer.co.uk](http://www.thepropertyexplorer.co.uk)

the property  
**explorer**

EXPLORER - Stylish, contemporary, and effortlessly chic - this one-and-a-half-bedroom maisonette is a true gem. Built circa 2019 by the renowned Kidbrook Homes, it boasts a long lease and the convenience of private allocated parking. CHAIN FREE.

Council Tax band: B

Tenure: Leasehold

Ground Rent £227 per year

Service Charge £997

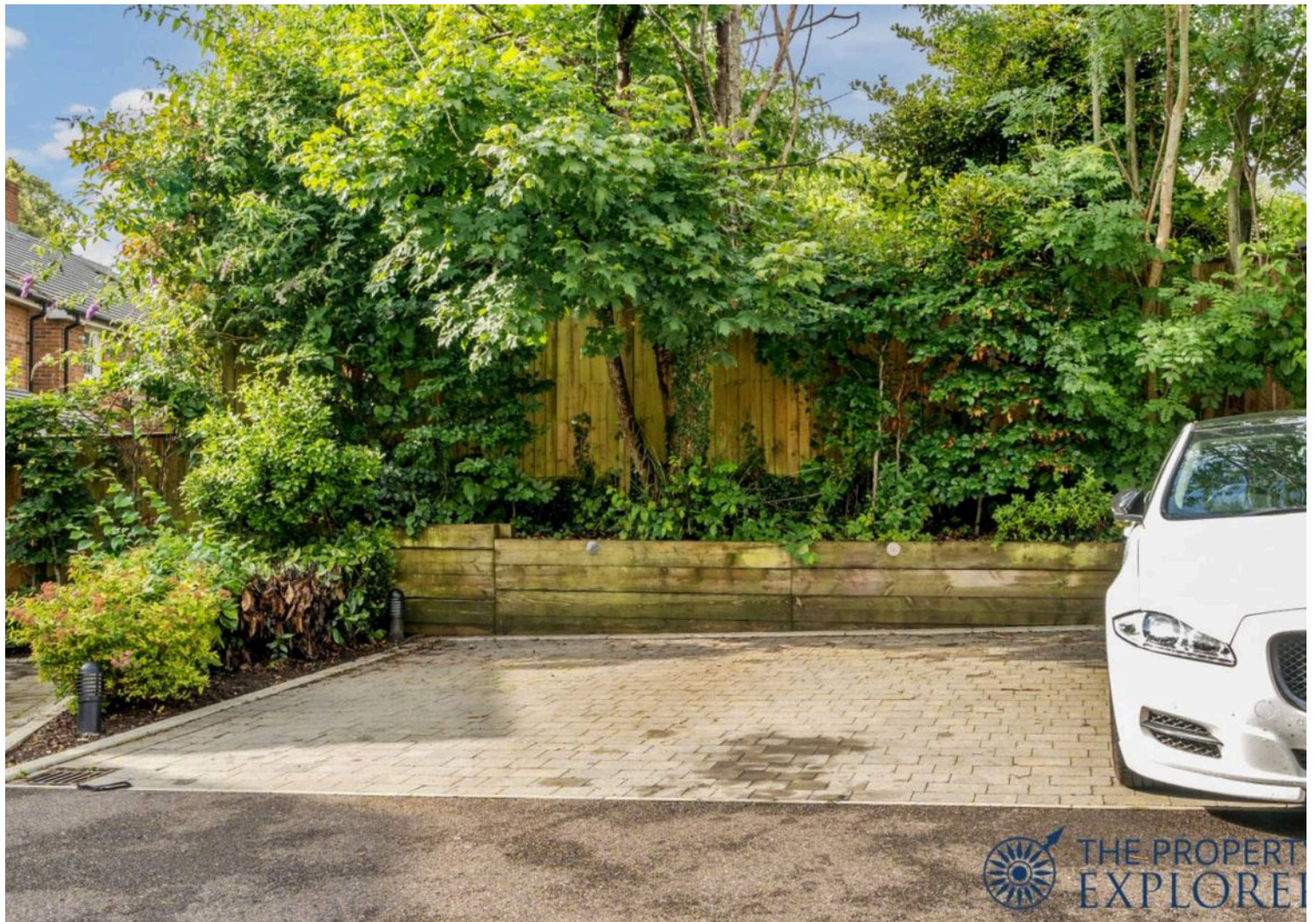
EPC Energy Efficiency Rating: B

EPC Environmental Impact Rating: B



- › ONE AND A HALF BEDROOMS
- › ALLOCATED PRIVATE PARKING
- › TOWN CENTRE LOCATION
- › GROUND FLOOR
- › LONG LEASE
- › BUILT 2019
- › EPC - B
- › GARDEN

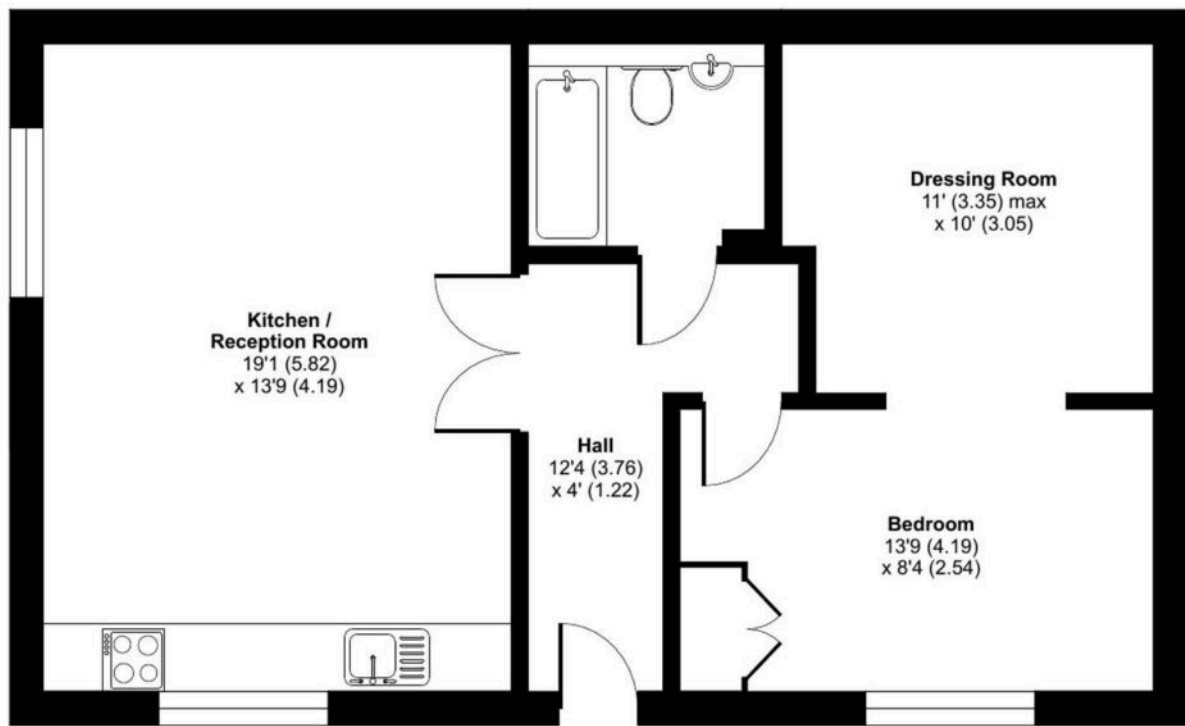




# Cliddesden Road, RG21

Approximate Area = 629 sq ft / 58.4 sq m

For identification only - Not to scale



**GROUND FLOOR**



Floor plan produced in accordance with RICS Property Measurement Standards incorporating International Property Measurement Standards (IPMS2 Residential). © n̄cheom 2023. Produced for Property Explorer. REF: 1006417

## Disclaimer

These particulars, whilst believed to be accurate are set out as a general outline only for guidance and do not constitute any part of an offer or contract. Intending purchasers should not rely on them as statements of representation of fact, but must satisfy themselves by inspection or otherwise as to their accuracy. No person in this firms employment has the authority to make or give any representation or warranty in respect of the property