

## Rockbourne Road, Sherfield-On-Loddon – RG27 0SR

Offers Over £550,000 Freehold

5 BEDROOMS • ENSUITE TO GUEST BEDROOM • ENSUITE TO MAIN BEDROOM • REMODELLED LUXURY KITCHEN •  
CROUDACE BUILT REGENCY • NEW BOILER MARCH 2023 • TAX BAND – E • VIDEO TOUR



01256 321777



[www.thepropertyexplorer.co.uk](http://www.thepropertyexplorer.co.uk)

the property  
**explorer**



EXPLORER – Exceptional and substantial 5-bedroom Regency home, expertly built by Croudace, offering spacious and versatile living throughout. Immaculately presented with elegant décor and impressive curb appeal. A perfect family home. Viewings highly recommended. Council Tax band: E

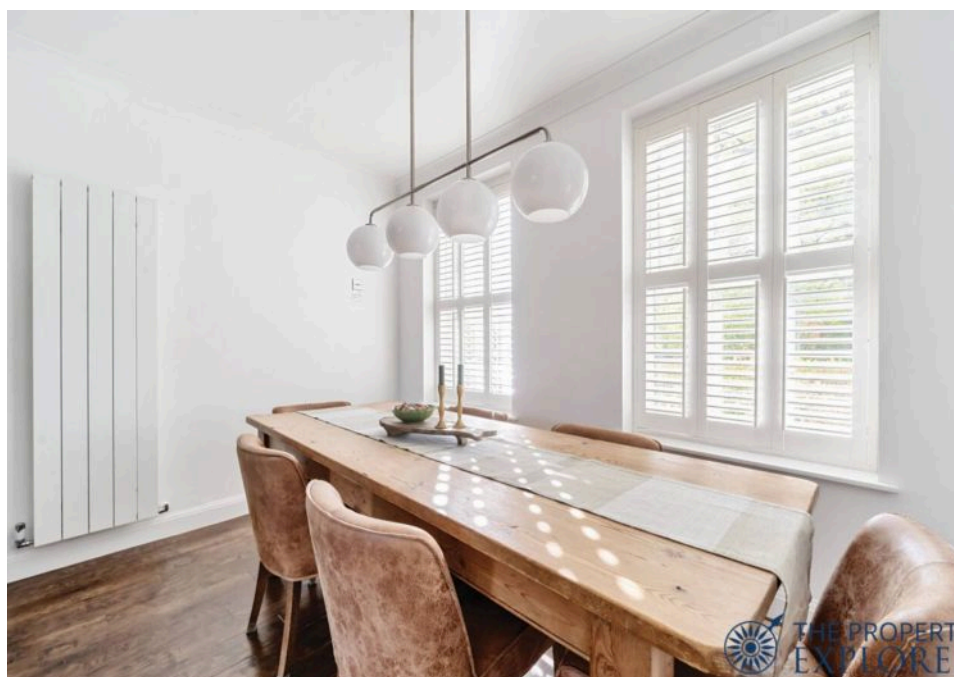
Tenure: Freehold

EPC Energy Efficiency Rating: C

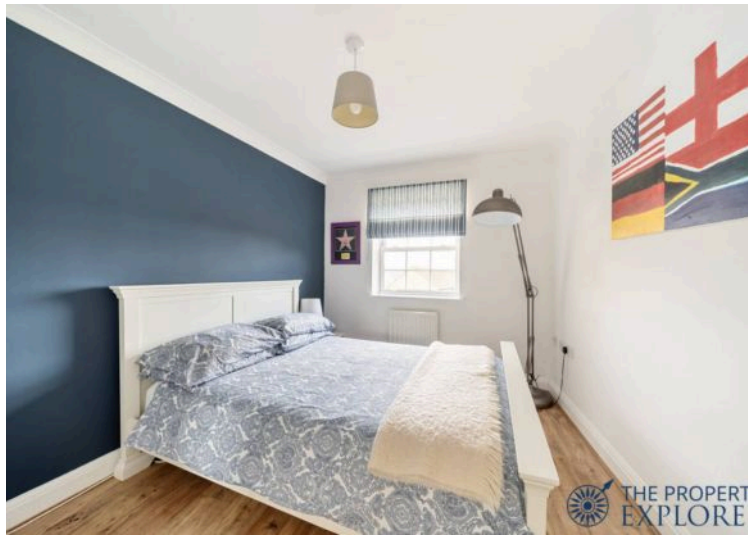
EPC Environmental Impact Rating: C



- › 5 BEDROOMS
- › ENSUITE TO GUEST BEDROOM
- › ENSUITE TO MAIN BEDROOM
- › REMODELLED LUXURY KITCHEN
- › CROUDACE BUILT REGENCY
- › NEW BOILER MARCH 2023
- › TAX BAND - E
- › VIDEO TOUR







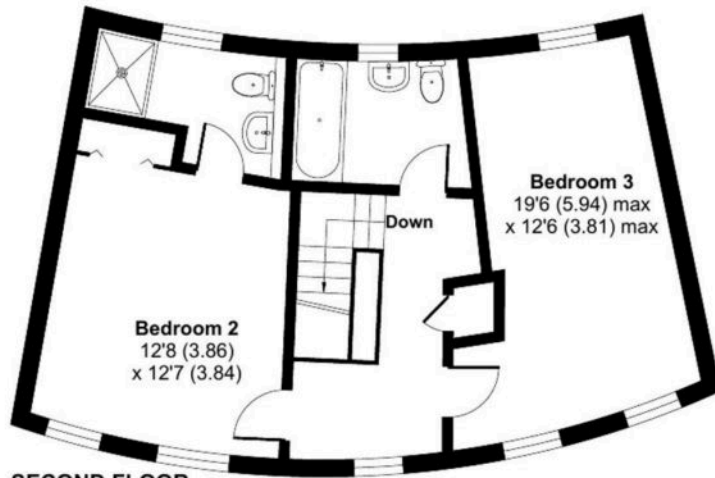
# Rockbourne Road, Hook, RG27

Approximate Area = 1716 sq ft / 159.4 sq m

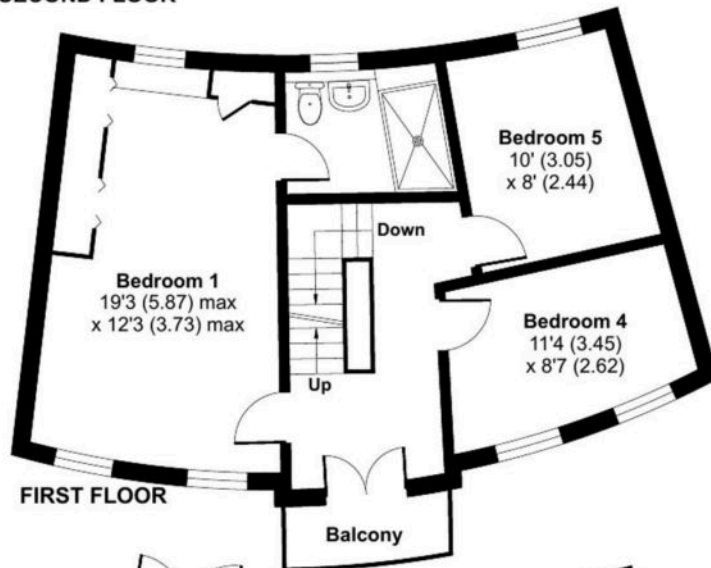
Garage = 174 sq ft / 16.2 sq m

Total = 1890 sq ft / 175.6 sq m

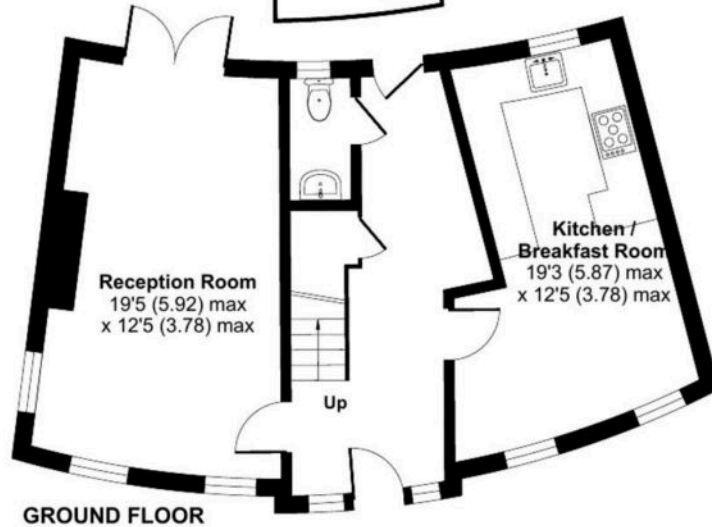
For identification only - Not to scale



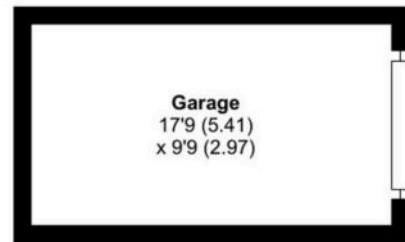
SECOND FLOOR



FIRST FLOOR



GROUND FLOOR



Floor plan produced in accordance with RICS Property Measurement Standards incorporating International Property Measurement Standards (IPMS2 Residential). © n̄cheom 2024. Produced for Property Explorer. REF: 1121283

## Disclaimer

These particulars, whilst believed to be accurate are set out as a general outline only for guidance and do not constitute any part of an offer or contract. Intending purchasers should not rely on them as statements of representation of fact, but must satisfy themselves by inspection or otherwise as to their accuracy. No person in this firms employment has the authority to make or give any representation or warranty in respect of the property