



## 4 Dorset Crescent, Basingstoke – RG22 5DU

£400,000 Freehold

VIDEO TOUR • 3 BEDROOMS • GARAGE • PARKING • ENSUITE • DOWNSTAIRS WC • LANDSCAPED GARDEN • LUXURY KITCHEN • WATER SOFTENER

01256 321777

[www.thepropertyexplorer.co.uk](http://www.thepropertyexplorer.co.uk)

the property  
**explorer**



Exquisite 3-bed semi-detached house with modern design, open-plan living, chef's kitchen, master suite with ensuite, landscaped garden, garage, water softener. Video tour available for this sophisticated and luxurious home in sought-after location.

Council Tax band: D

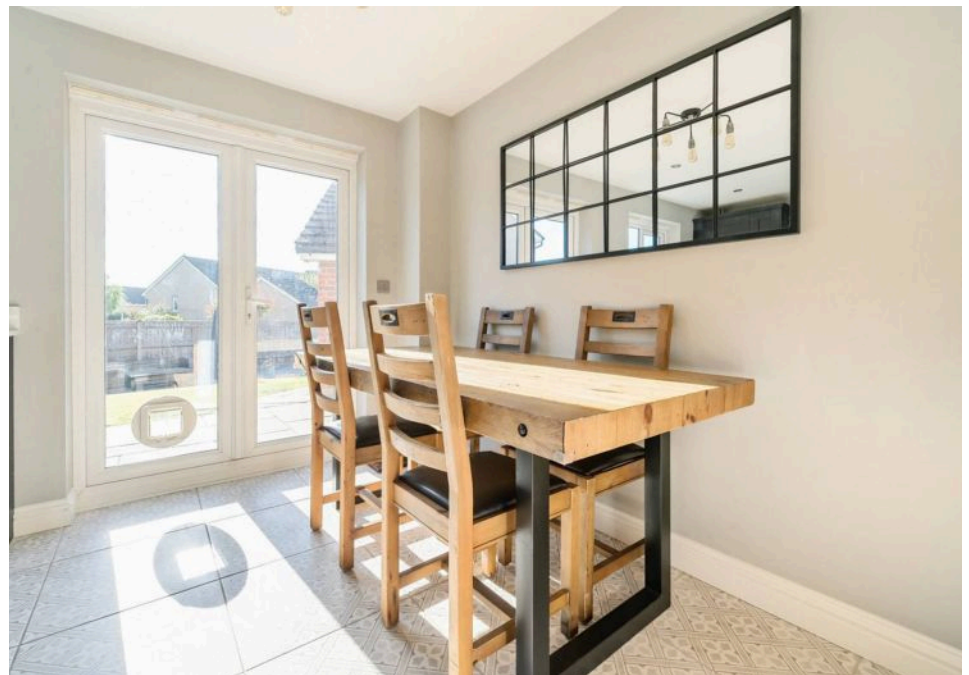
Tenure: Freehold

EPC Energy Efficiency Rating: C

EPC Environmental Impact Rating: C



- › VIDEO TOUR
- › 3 BEDROOMS
- › GARAGE
- › PARKING
- › ENSUITE
- › DOWNSTAIRS WC
- › LANDSCAPED GARDEN
- › LUXURY KITCHEN
- › WATER SOFTENER

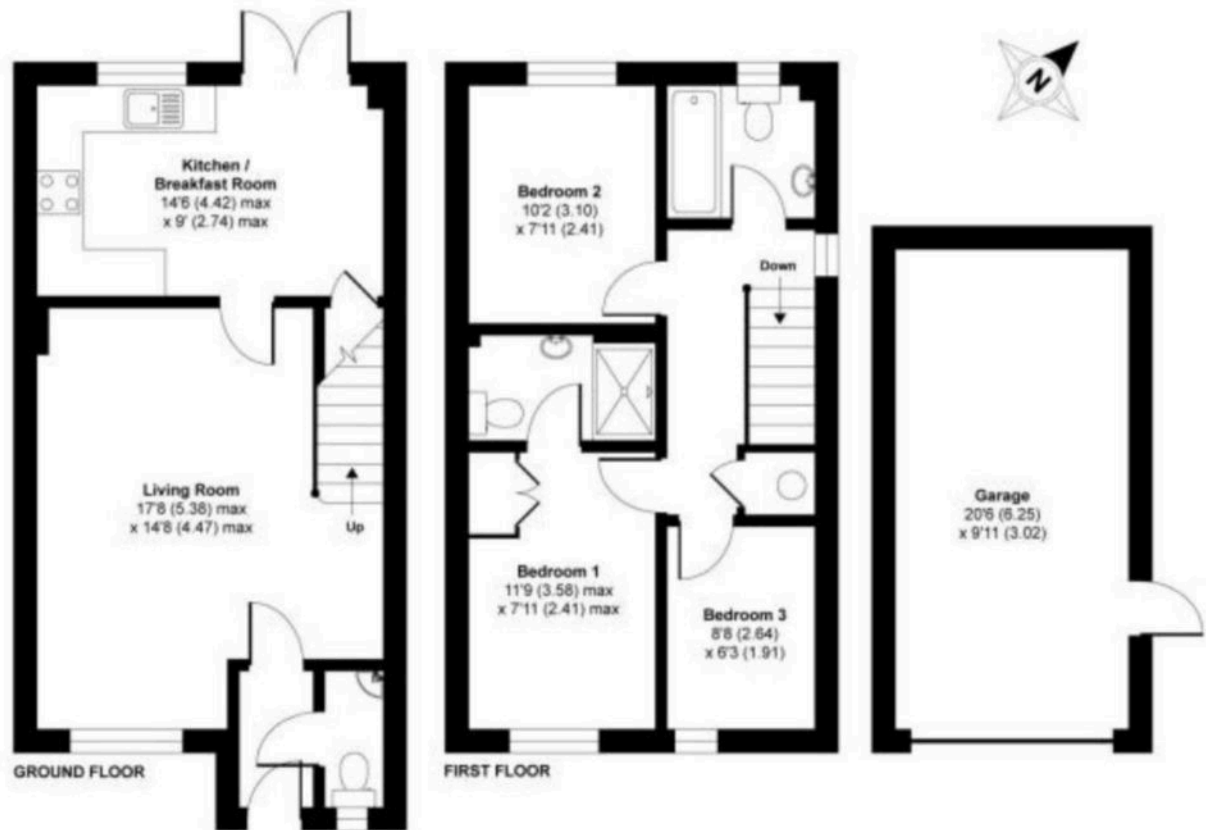






## Dorset Crescent, Basingstoke, RG22

APPROX. GROSS INTERNAL FLOOR AREA 1040 SQ FT 97 SQ METRES (INCLUDES GARAGE)



You can include any text here. The text can be modified upon generating your brochure.