

## Flat 11, Wolverson Square 15-16 London Street, Basingstoke - RG21 7BS

£130,000 Leasehold

CHAIN FREE • 116 YEAR LEASE • 1 BEDROOM APARTMENT • GREAT RENTAL PROPERTY • TOWN CENTRE LOCATION •  
GROUND RENT £250 PER YEAR • SERVICE CHARGE £2,200 PER YEAR • LIFT ACCESS

01256 321777

[www.thepropertyexplorer.co.uk](http://www.thepropertyexplorer.co.uk)

the property  
**explorer**



EXPLORER - An excellent 1-bedroom apartment in the heart of Basingstoke, offered with no onward chain.

Council Tax band: B

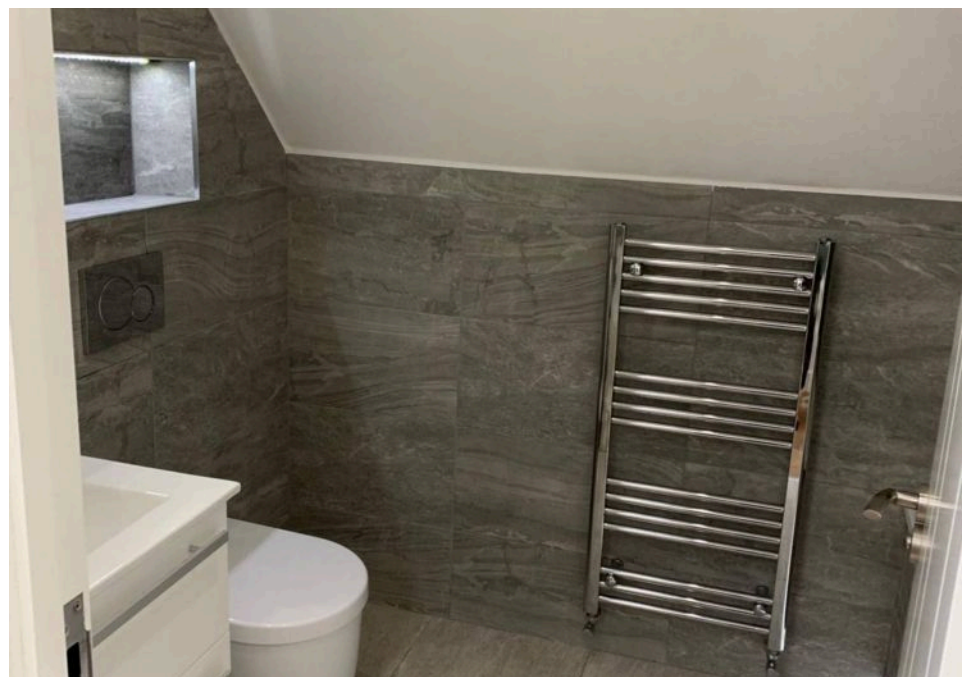
Tenure: Leasehold

EPC Energy Efficiency Rating: C

EPC Environmental Impact Rating: B

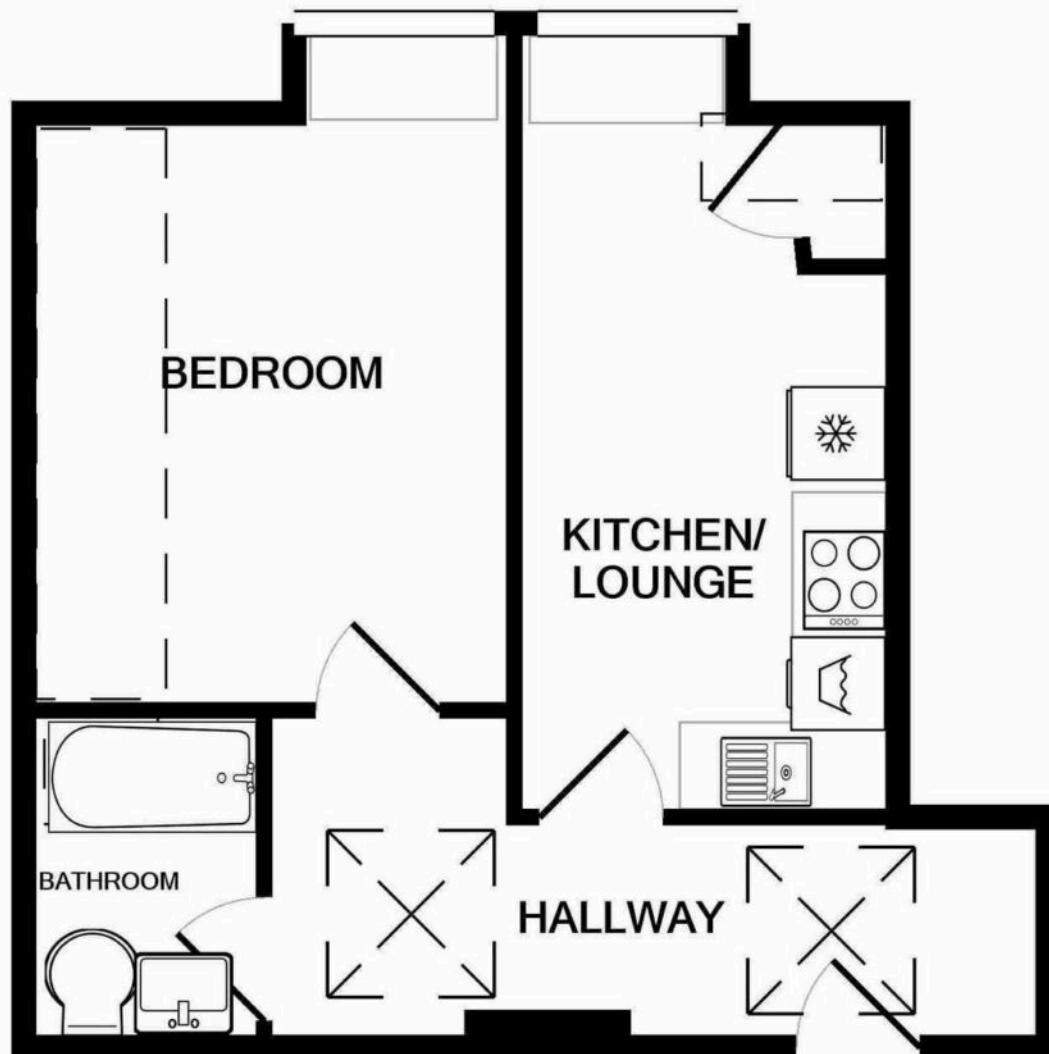


- › CHAIN FREE
- › 116 YEAR LEASE
- › 1 BEDROOM APARTMENT
- › GREAT RENTAL PROPERTY
- › TOWN CENTRE LOCATION
- › GROUND RENT £250 PER YEAR
- › SERVICE CHARGE £2,200 PER YEAR
- › LIFT ACCESS









Whilst every attempt has been made to ensure the accuracy of the floor plan contained here, measurements of doors, windows, rooms and any other items are approximate and no responsibility is taken for any error, omission, or mis-statement. This plan is for illustrative purposes only and should be used as such by any prospective purchaser. The services, systems and appliances shown have not been tested and no guarantee as to their operability or efficiency can be given

Made with Metropix ©2021