



THE PROPERTY EXPLORER



35 Newman Court

Barber Road, Basingstoke, RG22 4BW

Asking Price £160,800
Leasehold



FOR THE OVER 55

The Property Explorer are delighted to bring to the market this two-bedroom apartment. Viewings highly recommended. CHAIN FREE.



The property boasts a spacious lounge with a Juliet balcony making the room a light and airy, the kitchen is well-equipped with separate hob and mid-level oven., and the generous sized bathroom has level access walk-in shower and useful grab rails.

Newman Court is a social property with Residents' lounge, Activity room, Restaurant, Landscaped gardens ,Guest suite, Salon and an emergency call system covers every room.

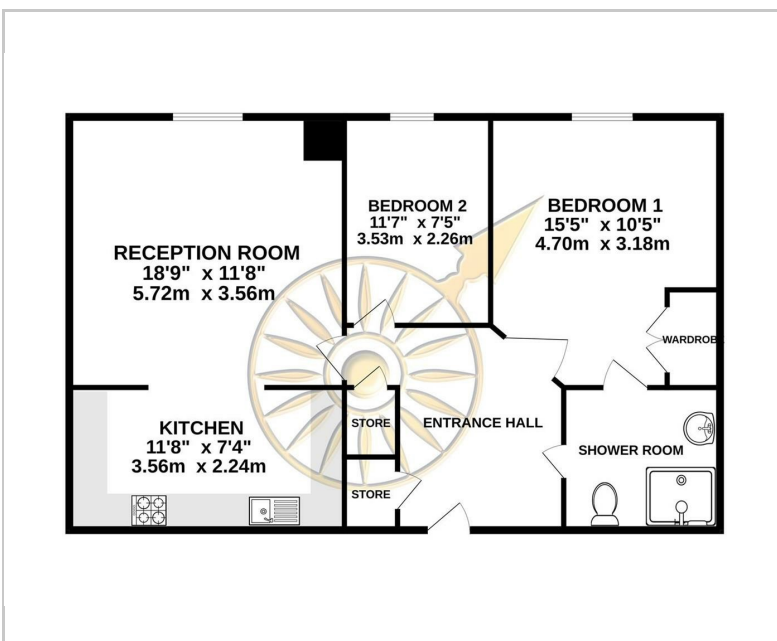
Please note the Maintenance Charge approx. £550.19 p/m which covers
 Call system
 Heating
 Buildings insurance
 Sinking fund
 Support line
 Water

A full breakdown is available upon request.

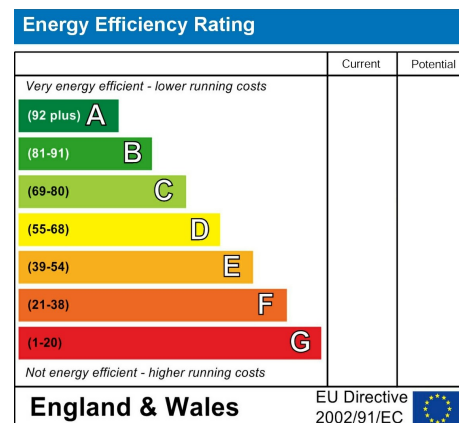
To be eligible for Extra Care Shared Equity you must meet the relevant age criteria for the scheme. Please note the minimum share available is always 75% and rent is not payable on the unowned share.

- 2 BEDROOM
- RETIREMENT APPARTMENT
- RESIDENTS PARKING
- SHARED OWNERSHIP 75%
- 85 YEAR LEASE APPROX.
- OVER 55'S
- COMMUNAL GARDEN
- EPC B
- COUNCIL TAX C
- CALL SYSTEM

Floor Plan



Energy Efficiency Graph



These particulars, whilst believed to be accurate are set out as a general outline only for guidance and do not constitute any part of an offer or contract. Intending purchasers should not rely on them as statements of representation of fact, but must satisfy themselves by inspection or otherwise as to their accuracy. No person in this firm's employment has the authority to make or give any representation or warranty in respect of the property.

www.thepropertyexplorer.co.uk

T 01256 321777 E hello@thepropertyexplorer.co.uk Arena Business Centre, Suite GF11 The Square, Basing View, Basingstoke, Hampshire, RG24 4EP