



THE PROPERTY
EXPLORER



9 Elgar Close, Basingstoke, RG22 4DN

Asking Price £300,000 Freehold



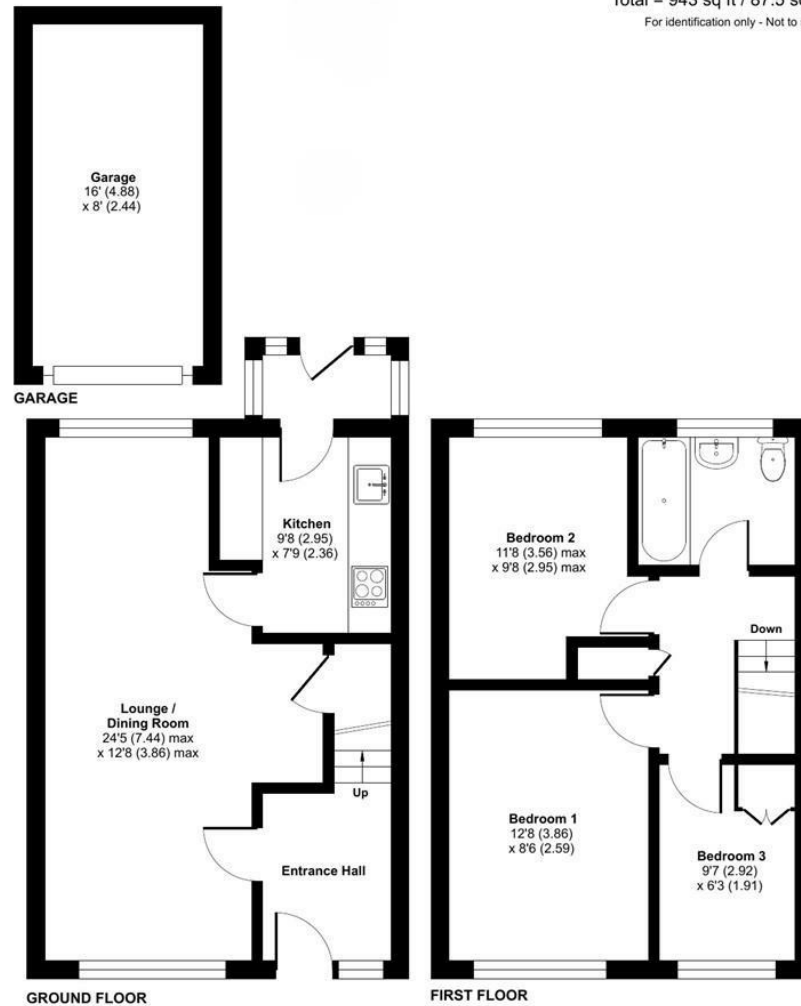
Elgar Close, Basingstoke, RG22

Approximate Area = 815 sq ft / 75.7 sq m

Garage = 128 sq ft / 11.8 sq m

Total = 943 sq ft / 87.5 sq m

For identification only - Not to scale



Floor plan produced in accordance with RICS Property Measurement Standards incorporating International Property Measurement Standards (IPMS2 Residential). © nchecom 2024. Produced for Property Explorer. REF: 1173899



These particulars, whilst believed to be accurate are set out as a general outline only for guidance and do not constitute any part of an offer or contract. Intending purchasers should not rely on them as statements of representation of fact, but must satisfy themselves by inspection or otherwise as to their accuracy. No person in this firm's employment has the authority to make or give any representation or warranty in respect of the property.

Arena Business Centre, Suite GF11 The Square, Basing View, Basingstoke, Hampshire, RG21 4EB
Tel: 01256 321777 Email: hello@thepropertyexplorer.co.uk <https://www.thepropertyexplorer.co.uk>