



THE PROPERTY
EXPLORER



14 Westminster Close, Basingstoke, RG22 4PP

Asking Price £625,000 Freehold



THE PROPERTY
EXPLORER

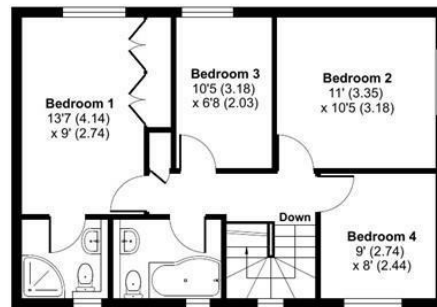
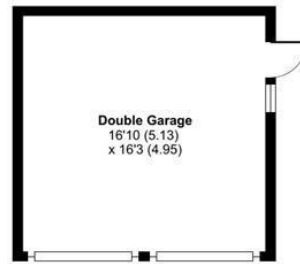
Westminster Close, Basingstoke, RG22

Approximate Area = 1188 sq ft / 110.3 sq m

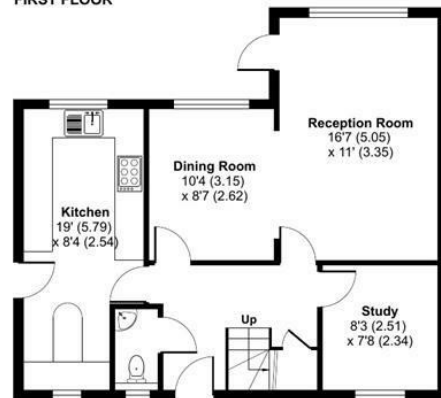
Garage = 275 sq ft / 25.5 sq m

Total = 1463 sq ft / 135.8 sq m

For identification only - Not to scale



FIRST FLOOR



GROUND FLOOR



Floor plan produced in accordance with RICS Property Measurement Standards incorporating International Property Measurement Standards (IPMS2 Residential). © nichecom 2024. Produced for Property Explorer. REF: 1173191



These particulars, whilst believed to be accurate are set out as a general outline only for guidance and do not constitute any part of an offer or contract. Intending purchasers should not rely on them as statements of representation of fact, but must satisfy themselves by inspection or otherwise as to their accuracy. No person in this firm's employment has the authority to make or give any representation or warranty in respect of the property.

Arena Business Centre, Suite GF11 The Square, Basing View, Basingstoke, Hampshire, RG21 4EB
Tel: 01256 321777 Email: hello@thepropertyexplorer.co.uk <https://www.thepropertyexplorer.co.uk>