



THE PROPERTY  
EXPLORER



26 Otterbourne Walk, Sherfield Park, Hook, RG27 0SF  
£600,000 Freehold



5



3



3



B

THE PROPERTY  
EXPLORER



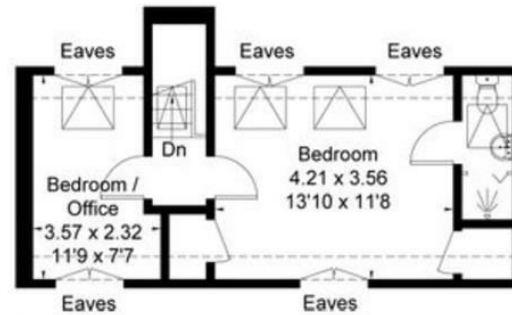
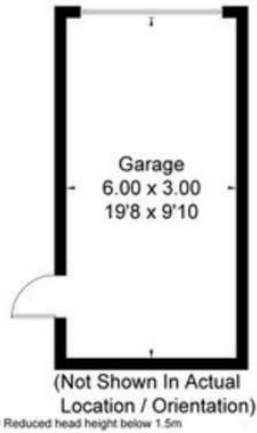
26 Otterbourne Walk, Sherfield Park, Hook, RG27 0SF

£600,000

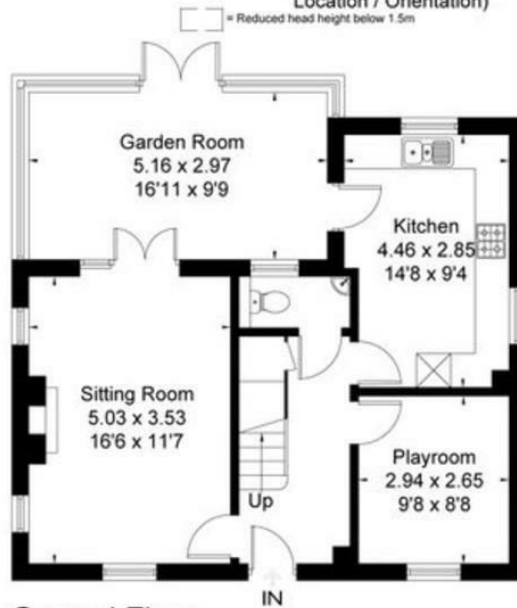
**EXPLORER** - An extended and much improved Croudace built four/five bedroom detached family home offering generous and versatile accommodation throughout. Benefits include three bathrooms, garage with off street parking, and Southerly facing rear garden.



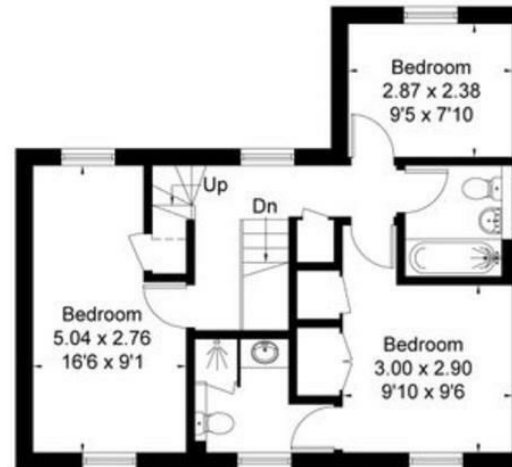
Approximate Area = 150.3 sq m / 1618 sq ft  
 Garage = 18.0 sq m / 194 sq ft  
 Total = 168.3 sq m / 1812 sq ft  
 Including Limited Use Area (8.4 sq m / 90 sq ft)



Second Floor



Ground Floor



First Floor

These particulars, whilst believed to be accurate are set out as a general outline only for guidance and do not constitute any part of an offer or contract. Intending purchasers should not rely on them as statements of representation of fact, but must satisfy themselves by inspection or otherwise as to their accuracy. No person in this firm's employment has the authority to make or give any representation or warranty in respect of the property.