

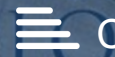


THE PROPERTY
EXPLORER



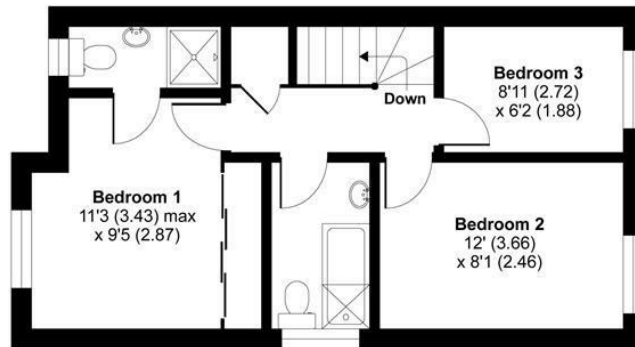
2 Rycroft Meadow, Basingstoke, RG22 4QF

Offers In Excess Of £399,950 Freehold

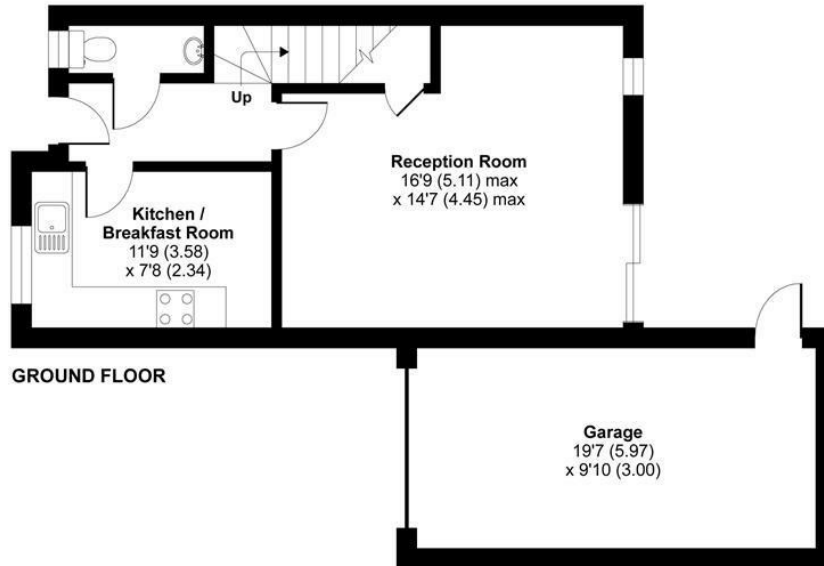


Rycroft Meadow, Beggarwood, Basingstoke, RG22

APPROX. GROSS INTERNAL FLOOR AREA 1042 SQ FT 96.8 SQ METRES (INCLUDES GARAGE)



FIRST FLOOR



GROUND FLOOR

Whilst every attempt has been made to ensure the accuracy of the floor plan contained here, measurements of doors, windows and rooms are approximate and no responsibility is taken for any error, omission or misstatement. These plans are for representation purposes only as defined by RICS Code of Measuring Practice and should be used as such by any prospective purchaser. Specifically no guarantee is given on the total square footage of the property if quoted on this plan. Any figure given is for initial guidance only and should not be relied on as a basis of valuation.

Copyright nichecom.co.uk 2016 Produced for Property Explorer REF : 91998



These particulars, whilst believed to be accurate are set out as a general outline only for guidance and do not constitute any part of an offer or contract. Intending purchasers should not rely on them as statements of representation of fact, but must satisfy themselves by inspection or otherwise as to their accuracy. No person in this firm's employment has the authority to make or give any representation or warranty in respect of the property.

Arena Business Centre, Suite GF11 The Square, Basing View, Basingstoke, Hampshire, RG21 4EB
Tel: 01256 321777 Email: hello@thepropertyexplorer.co.uk <https://www.thepropertyexplorer.co.uk>