



THE PROPERTY
EXPLORER



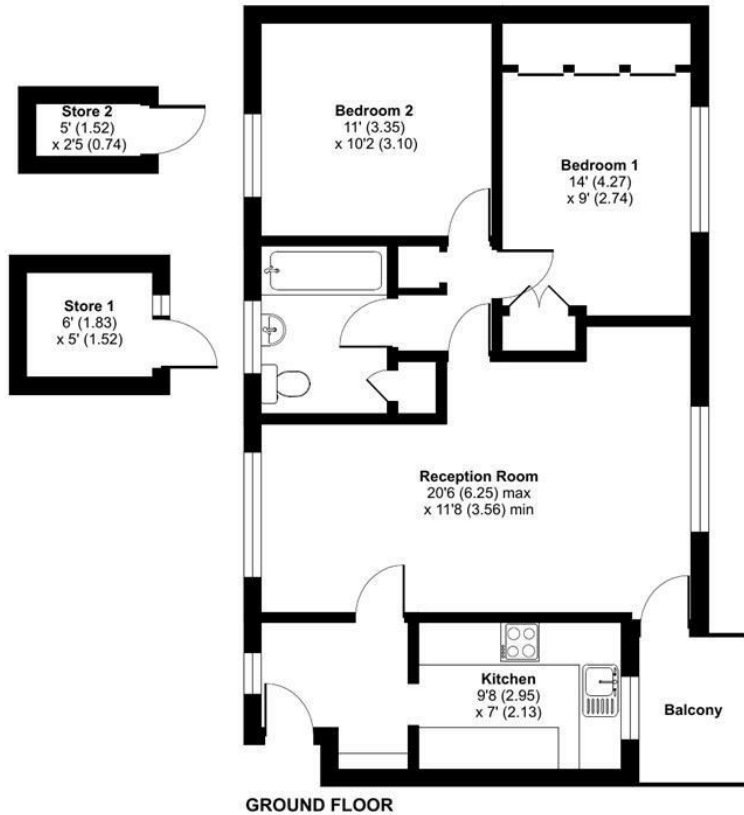
34 St. Michaels Road, Basingstoke, RG22 6TW

Asking Price £190,000 Leasehold



St. Michaels Road, Basingstoke, RG22

Approximate Area = 700 sq ft / 65.1 sq m
Store 1 = 30 sq ft / 2.7 sq m
Store 2 = 13 sq ft / 1.2 sq m
Total = 743 sq ft / 69 sq m
For identification only - Not to scale



GROUND FLOOR



Floor plan produced in accordance with RICS Property Measurement Standards incorporating International Property Measurement Standards (IPMS2 Residential). © nichecom 2023. Produced for Property Explorer. REF: 1149583.



These particulars, whilst believed to be accurate are set out as a general outline only for guidance and do not constitute any part of an offer or contract. Intending purchasers should not rely on them as statements of representation of fact, but must satisfy themselves by inspection or otherwise as to their accuracy. No person in this firm's employment has the authority to make or give any representation or warranty in respect of the property.

Arena Business Centre, Suite GF11 The Square, Basing View, Basingstoke, Hampshire, RG21 4EB
Tel: 01256 321777 Email: hello@thepropertyexplorer.co.uk <https://www.thepropertyexplorer.co.uk>