



THE PROPERTY
EXPLORER



31 Coltsfoot Way, Longacre, Basingstoke, RG23 7FH
£325,000 Freehold



2



2



1



B



31 Coltsfoot Way, Longacre, Basingstoke, RG23 7FH

£325,000

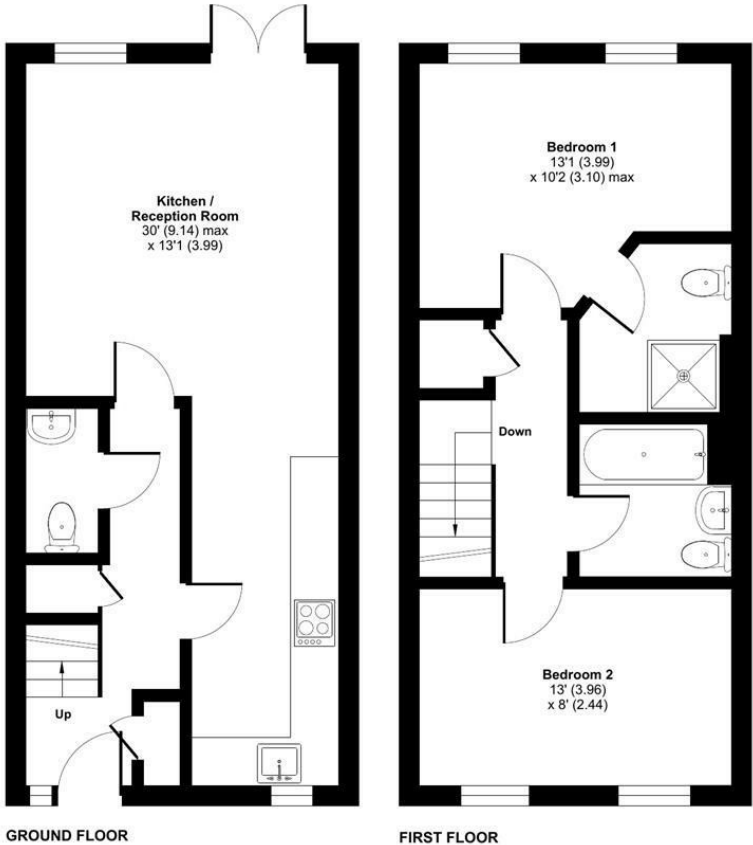
EXPLORER - Super stylish modern 2 double bedroom semi-detached property with off road driveway parking for 2 cars to the front, ensuite to principal bedroom, and downstairs WC. The rear garden has been professionally landscaped and offers an extended social space for entertaining friends and family.




Floor Plans

Coltsfoot Way, Basingstoke, RG23

Approximate Area = 780 sq ft / 72.4 sq m
For identification only - Not to scale



 RICS Certified Property Measurer
Floor plan produced in accordance with RICS Property Measurement Standards incorporating International Property Measurement Standards (IPMS2 Residential). © nichecom 2024.
Produced for Property Explorer. REF: 1105246

These particulars, whilst believed to be accurate are set out as a general outline only for guidance and do not constitute any part of an offer or contract. Intending purchasers should not rely on them as statements of representation of fact, but must satisfy themselves by inspection or otherwise as to their accuracy. No person in this firms employment has the authority to make or give any representation or warranty in respect of the property.