



THE PROPERTY  
EXPLORER



70 Rockbourne Road, Sherfield Park, Hook, RG27 0SR  
**£595,000 Freehold**



EXPLORER





70 Rockbourne Road, Sherfield Park, Hook, RG27 0SR

£595,000

EXPLORER - Exceptional & substantial 5 bedroom Croudace built Regency boasting generously sized and versatile accommodation throughout. A fabulously well cared for family home with sophisticated décor and bags of curb appeal. Viewings highly recommended.



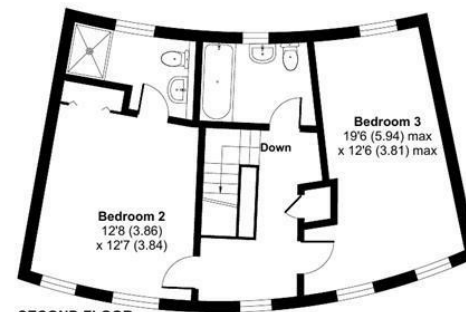
## Rockbourne Road, Hook, RG27

Approximate Area = 1716 sq ft / 159.4 sq m

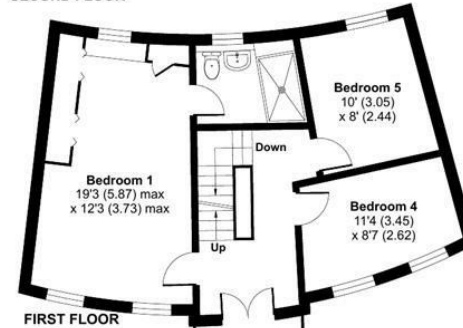
Garage = 174 sq ft / 16.2 sq m

Total = 1890 sq ft / 175.6 sq m

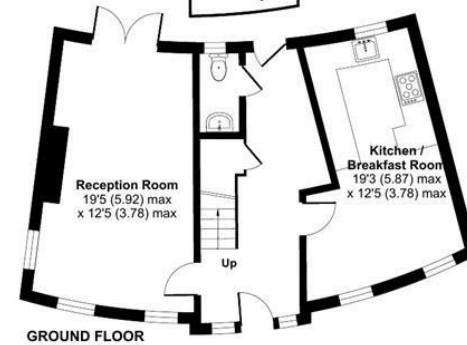
For identification only - Not to scale



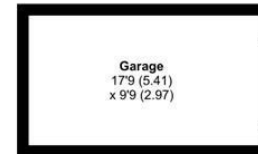
SECOND FLOOR



FIRST FLOOR



GROUND FLOOR



Floor plan produced in accordance with RICS Property Measurement Standards incorporating International Property Measurement Standards (IPMS2 Residential). © nichecom 2024. Produced for Property Explorer. REF: 1121293.

These particulars, whilst believed to be accurate are set out as a general outline only for guidance and do not constitute any part of an offer or contract. Intending purchasers should not rely on them as statements of representation of fact, but must satisfy themselves by inspection or otherwise as to their accuracy. No person in this firm's employment has the authority to make or give any representation or warranty in respect of the property.