



THE PROPERTY
EXPLORER



14 Blackwater Close, Oakley, Basingstoke, RG23 7AS
£675,000 Freehold





14 Blackwater Close, Oakley, Basingstoke, RG23 7AS

£675,000

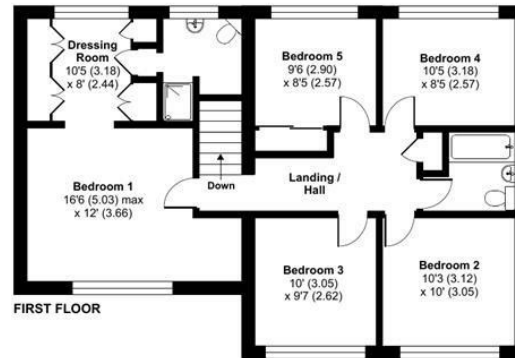
AGENTS THOUGHTS.. Unique & Rarely available 6 bedroom detached house with separate ANNEXE situated on a large corner plot in a popular VILLAGE location. Viewings highly recommended.



Blackwater Close, Oakley, Basingstoke, RG23

Approximate Area = 2162 sq ft / 200.8 sq m (Includes Annexe)

For identification only - Not to scale



Floor plan produced in accordance with RICS Property Measurement Standards incorporating International Property Measurement Standards (IPMS2 Residential). © nichecom 2024. Produced for Property Explorer. REF: 1109220

These particulars, whilst believed to be accurate are set out as a general outline only for guidance and do not constitute any part of an offer or contract. Intending purchasers should not rely on them as statements of representation of fact, but must satisfy themselves by inspection or otherwise as to their accuracy. No person in this firm's employment has the authority to make or give any representation or warranty in respect of the property.