



8 Bunting Mews, Basingstoke, RG22 5UA

Asking Price £700,000 Freehold



THE PROPERTY
EXPLORER

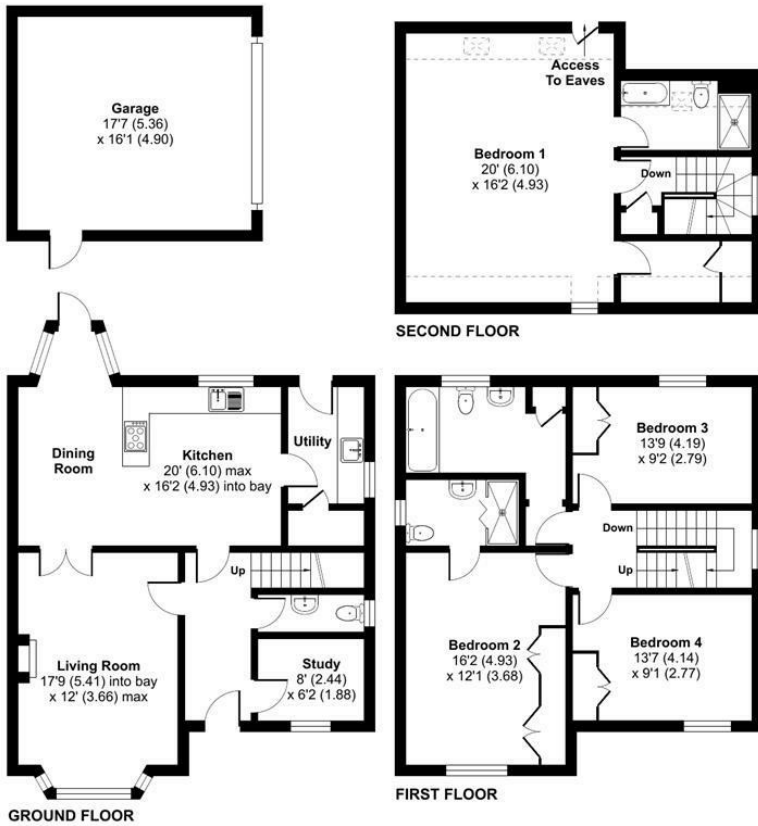
Floor Plan

Bunting Mews, Basingstoke, RG22

Approximate Area = 1811 sq ft / 168.2 sq m
 Limited Use Area(s) = 100 sq ft / 9.3 sq m
 Garage = 283 sq ft / 26.3 sq m
 Total = 2194 sq ft / 203.8 sq m
 For identification only - Not to scale



Denotes restricted head height



Floor plan produced in accordance with RICS Property Measurement Standards incorporating International Property Measurement Standards (IPMS2 Residential). © rncocom 2023. Produced for Property Explorer. REF: 1023436



These particulars, whilst believed to be accurate are set out as a general outline only for guidance and do not constitute any part of an offer or contract. Intending purchasers should not rely on them as statements of representation of fact, but must satisfy themselves by inspection or otherwise as to their accuracy. No person in this firm's employment has the authority to make or give any representation or warranty in respect of the property.

Arena Business Centre, Suite GF11 The Square, Basing View, Basingstoke, Hampshire, RG21 4EB
 Tel: 01256 321777 Email: hello@thepropertyexplorer.co.uk <https://www.thepropertyexplorer.co.uk>