



5 English Wood, Park Village, Basingstoke, RG24 9SX  
£565,000 Freehold



4



3



3





5 English Wood, Park Village, Basingstoke, RG24 9SX

£565,000

### AGENTS THOUGHTS.

Sophisticated, Stylish, Social... Some of the chosen superlatives to best describe this immaculate family home. Viewings highly recommended by the sellers sole agents.



## English Wood, Basingstoke, RG24

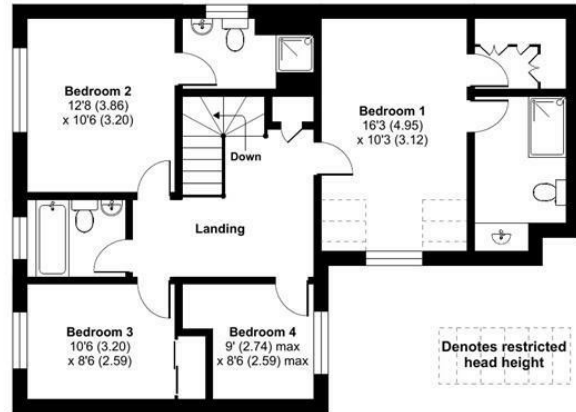
Approximate Area = 1490 sq ft / 138.4 sq m

Limited Use Area(s) = 22 sq ft / 2 sq m

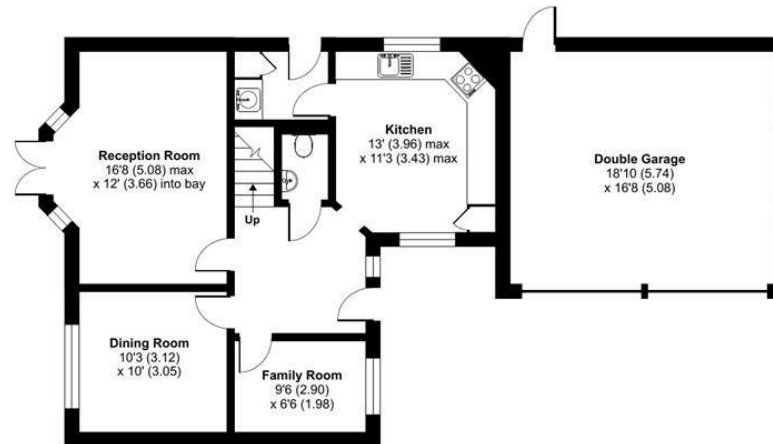
Garage = 310 sq ft / 28.8 sq m

Total = 1822 sq ft / 169.2 sq m

For identification only - Not to scale



FIRST FLOOR



GROUND FLOOR



Floor plan produced in accordance with RICS Property Measurement Standards incorporating International Property Measurement Standards (IPMS2 Residential). © nichecom 2024. Produced for Property Explorer. REF: 1116487

These particulars, whilst believed to be accurate are set out as a general outline only for guidance and do not constitute any part of an offer or contract. Intending purchasers should not rely on them as statements of representation of fact, but must satisfy themselves by inspection or otherwise as to their accuracy. No person in this firm's employment has the authority to make or give any representation or warranty in respect of the property.