



30 Bronze Close, Beggarwood, Basingstoke, RG22 4UF  
£600,000 Freehold



THE PROPERTY  
EXPLORER



30 Bronze Close, Beggarwood, Basingstoke, RG22 4UF

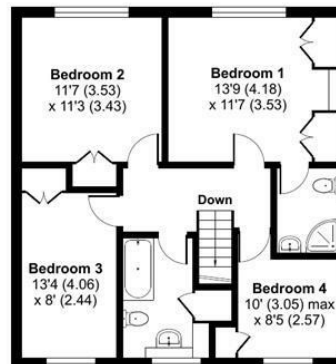
£600,000

EXPLORER - Delighted to offer this sophisticated and super stylish 4 bedroom detached family home offering well appointed accommodation throughout. This much improved property is a must see, and boasts an abundance of unique selling points including double garage with driveway parking for up to 6 cars.

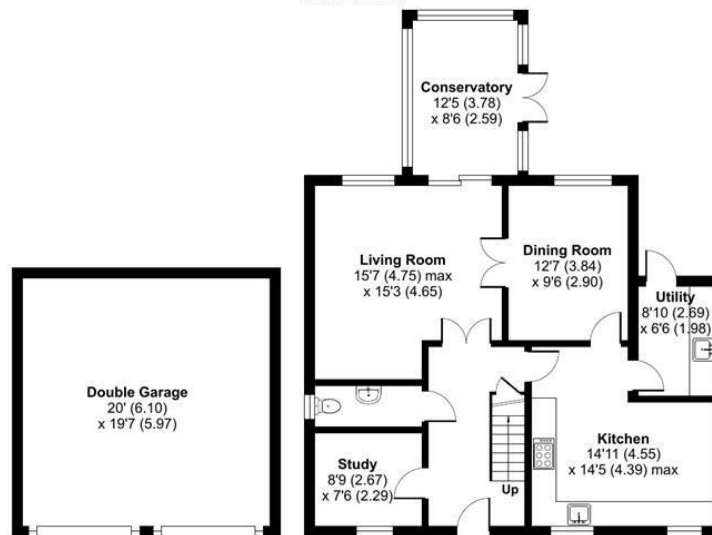


# Bronze Close, Beggarwood, Basingstoke, RG22

Approximate Area = 1651 sq ft / 153.3 sq m  
Double Garage = 400 sq ft / 37.1 sq m  
Total = 2051 sq ft / 190.5 sq m  
For identification only - Not to scale



FIRST FLOOR



GROUND FLOOR



Floor plan produced in accordance with RICS Property Measurement Standards incorporating International Property Measurement Standards (IPMS2 Residential). © richcom 2024. Produced for Property Explorer. REF: 1111943

These particulars, whilst believed to be accurate are set out as a general outline only for guidance and do not constitute any part of an offer or contract. Intending purchasers should not rely on them as statements of representation of fact, but must satisfy themselves by inspection or otherwise as to their accuracy. No person in this firm's employment has the authority to make or give any representation or warranty in respect of the property.