



THE PROPERTY
EXPLORER



11 Warham Road, Basingstoke, RG23 8BQ

Offers Over £325,000 Freehold



2



2

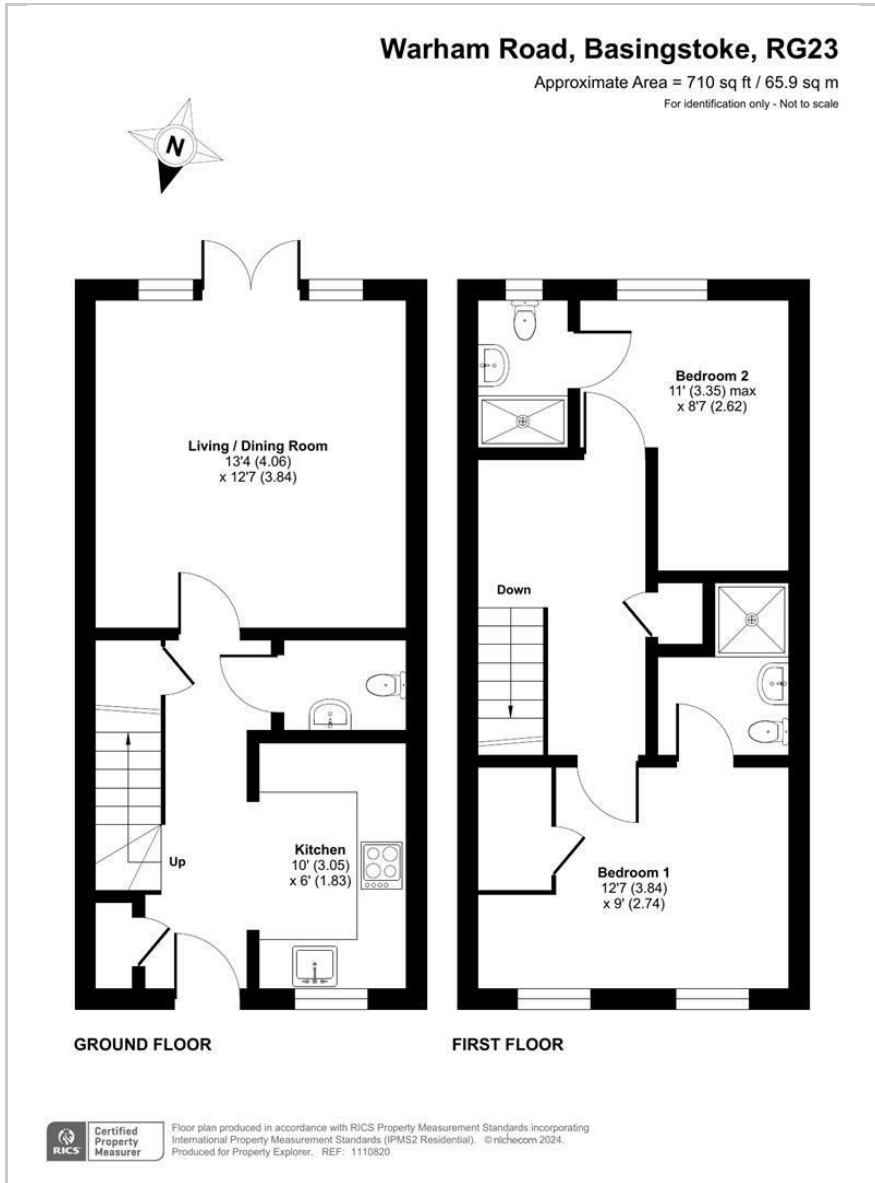


1



B

Floor Plan



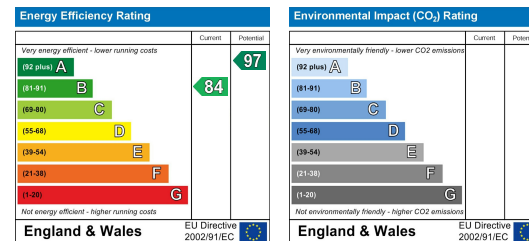
Accommodation

- BUILT 2018 / REDROW HOMES
- 2 DOUBLE BEDROOMS
- 2 ENSUITES
- ALLOCATED PARKING TO THE SIDE
APPROX. 4 CARS
- DOWNSTAIRS WC
- 3D VIDEO WALKTHROUGH
- SOUTH FACING GARDEN
- EPC - B
- TAX BAND - C
- ESTATE CHARGE £320pa

Viewing

Please contact our The Property Explorer Office on 01256 321777 if you wish to arrange a viewing appointment for this property or require further information.

Energy Efficiency Graph



These particulars, whilst believed to be accurate are set out as a general outline only for guidance and do not constitute any part of an offer or contract. Intending purchasers should not rely on them as statements of representation of fact, but must satisfy themselves by inspection or otherwise as to their accuracy. No person in this firm's employment has the authority to make or give any representation or warranty in respect of the property.