



THE PROPERTY
EXPLORER



39 Otterbourne Walk, Sherfield Park, Hook, RG27 0SE
£650,000 Freehold



4



2



2



C



39 Otterbourne Walk, Sherfield Park, Hook, RG27 0SE

£650,000

EXPLORER - Sensational, Chic, Stylish, Social... Some of the chosen superlatives to best describe this much improved and remodelled Croudace built Palladio. Viewings highly recommended by the sellers sole agents.



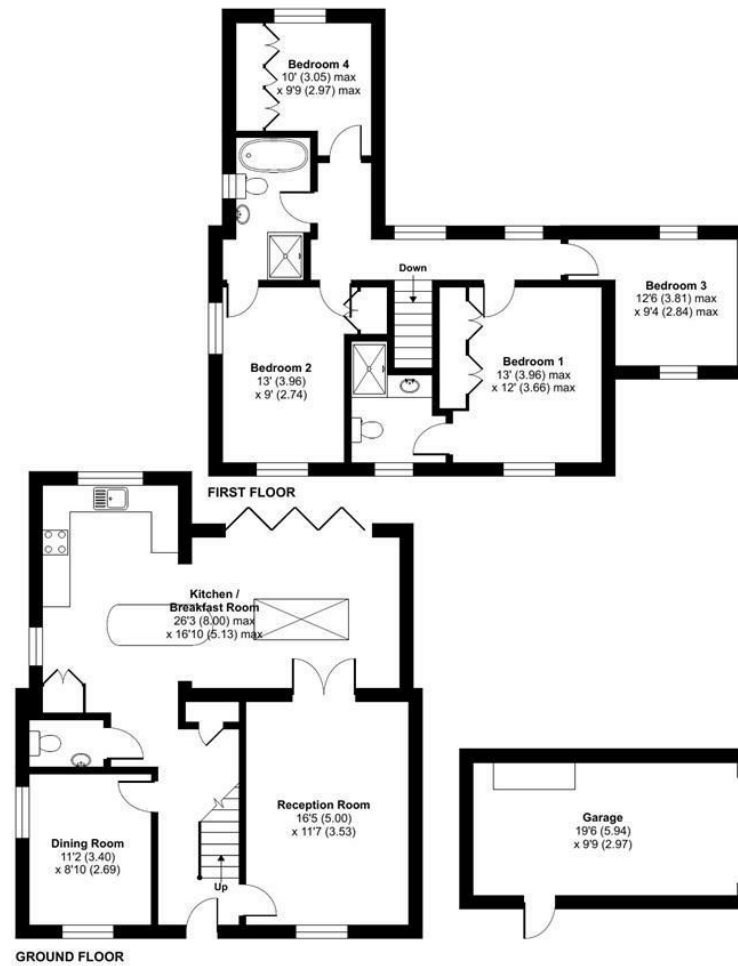
Otterbourne Walk, Sherfield-on-Loddon, Hook, RG27

Approximate Area = 1534 sq ft / 142.5 sq m

Garage = 190 sq ft / 17.6 sq m

Total = 1724 sq ft / 160.1 sq m

For identification only - Not to scale



Floor plan produced in accordance with RICS Property Measurement Standards incorporating International Property Measurement Standards (IPMS2 Residential). © ricsbecom 2024. Produced for Property Explorer. REF: 1102190.

These particulars, whilst believed to be accurate are set out as a general outline only for guidance and do not constitute any part of an offer or contract. Intending purchasers should not rely on them as statements of representation of fact, but must satisfy themselves by inspection or otherwise as to their accuracy. No person in this firm's employment has the authority to make or give any representation or warranty in respect of the property.