



THE PROPERTY  
EXPLORER



90 The Cornfields, Hatch Warren, Basingstoke, RG22 4QD  
£550,000 Freehold





90 The Cornfields, Hatch Warren, Basingstoke, RG22 4QD

£550,000

EXPLORER - This super stylish 4 bedroom detached family home has been perfectly reconfigured by the current owners to create an outstanding open plan kitchen / breakfast, an ideal social hub for entertaining friends and family. Viewings by appointment only.



THE PROPERTY  
EXPLORER

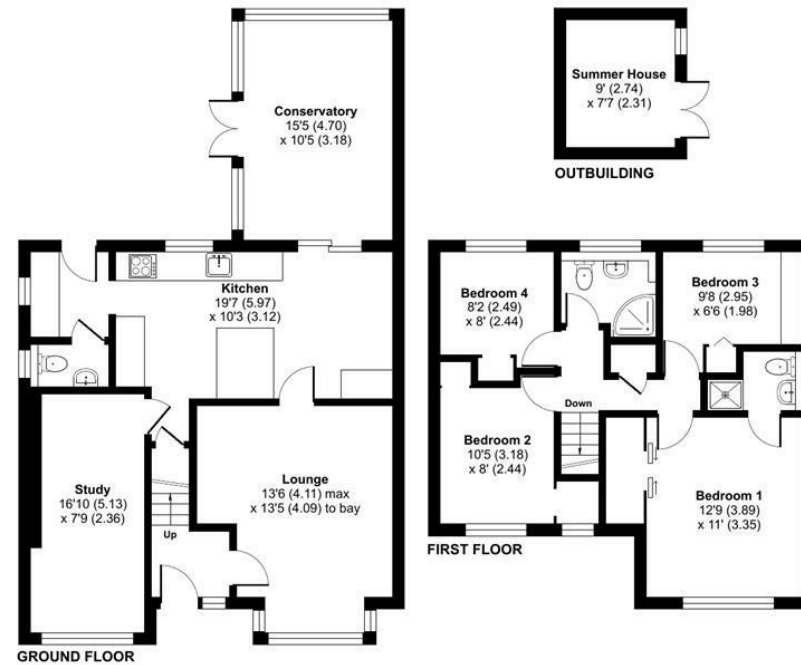
## The Cornfields, Hatch Warren, Basingstoke, RG22

Approximate Area = 1386 sq ft / 128.7 sq m

Outbuilding = 69 sq ft / 6.4 sq m

Total = 1455 sq ft / 135.1 sq m

For identification only - Not to scale



Floor plan produced in accordance with RICS Property Measurement Standards incorporating International Property Measurement Standards (IPMS2 Residential). © nichecom 2024. Produced for Property Explorer. REF: 1096887

These particulars, whilst believed to be accurate are set out as a general outline only for guidance and do not constitute any part of an offer or contract. Intending purchasers should not rely on them as statements of representation of fact, but must satisfy themselves by inspection or otherwise as to their accuracy. No person in this firm's employment has the authority to make or give any representation or warranty in respect of the property.